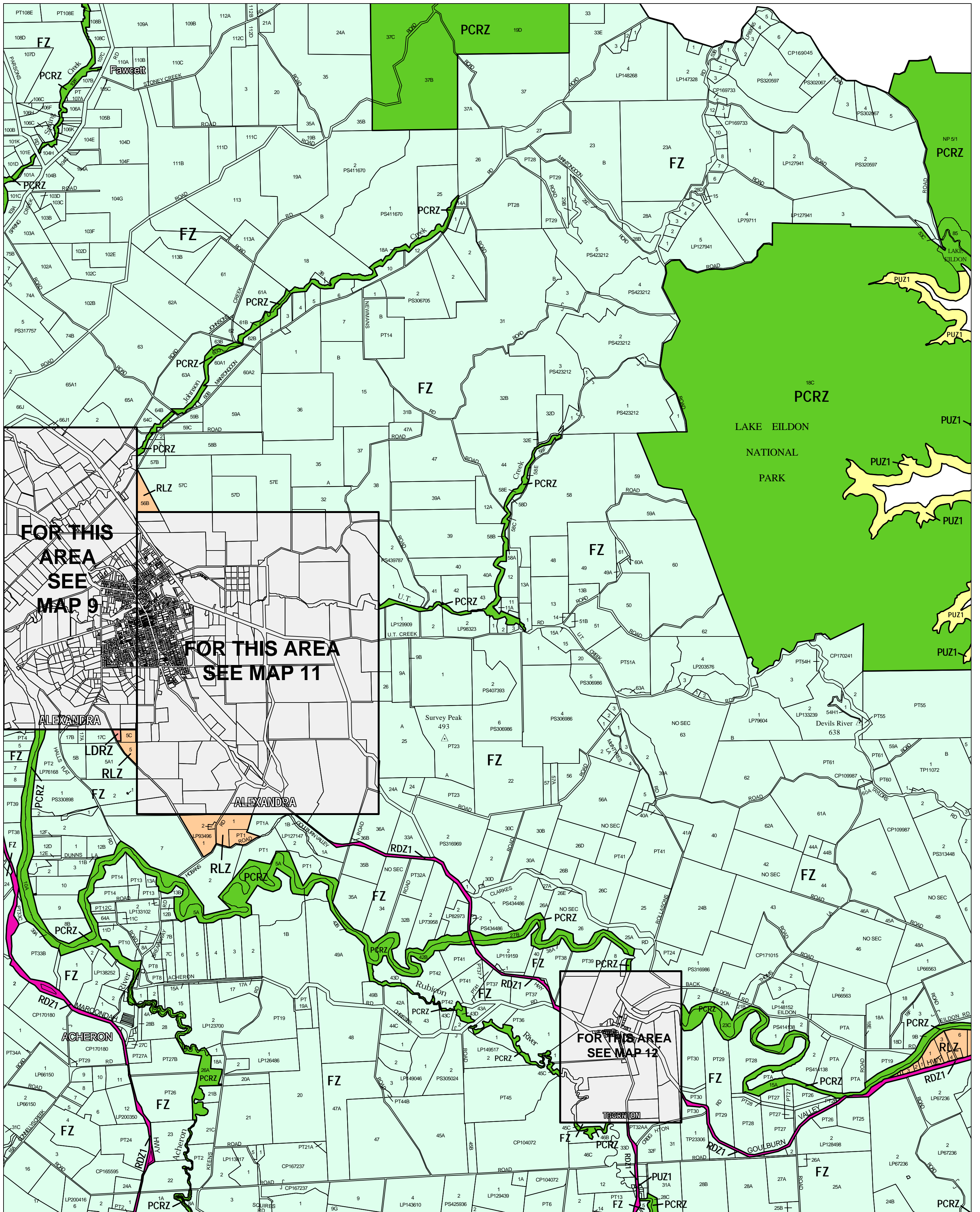
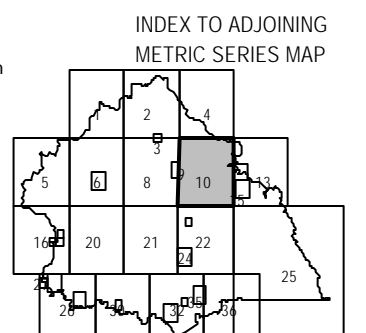
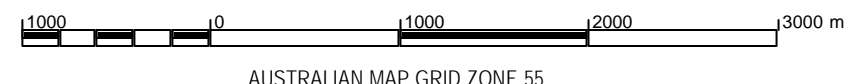


MURRINDINDI PLANNING SCHEME - LOCAL PROVISION



This publication is copyright. No part may be reproduced by any process except in accordance with the provisions of the Copyright Act of the State of Victoria. This map should be read in conjunction with additional Planning Overlay Maps (if applicable) as indicated on the INDEX TO MAPS.

- Public Land**
- Public Conservation And Resource Zone
 - Public Use Zone Service And Utility
 - Road Zone Category 1
- Residential**
- Low Density Residential Zone
- Rural**
- Farming Zone
 - Rural Living Zone



Printed: 25/7/2006

AMENDMENT C18

ZONES

MAP No 10