



Coordinated Imagery Program

Newsletter No. 3/February 2007

The Coordinated Imagery Program (CIP) is an ongoing program of imagery acquisition, storage and access.

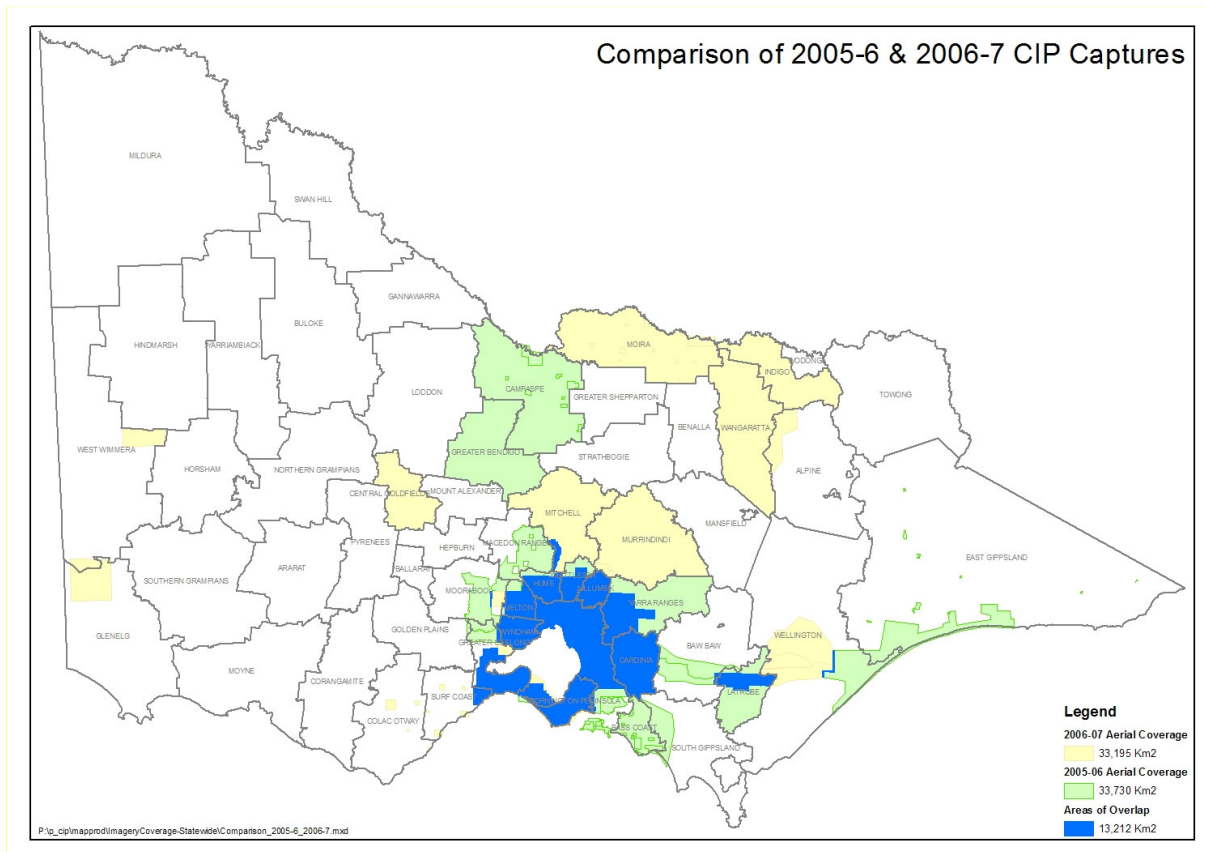
Update

As at the end of January 2007, the CIP has organised 15 projects with 27 partners, covering approximately 33,000 square kms and equating to a total value of over \$1,000,000.00.

Aerial Photography capture has commenced over the Shires of Moira, Indigo and Wangaratta. The Melbourne/Port Phillip 35cm photography has been flown and was delivered to DSE two weeks before the expected delivery date.

Photography has also been flown and delivered for two fires in the Wimmera District.

Currently CIP is in the process of identifying image solutions to capture an additional 10,000 square kilometres, covering the recent Great Divide bushfire complex, totalling approximately \$450,000.00.



How the CIP Works

CIP has received a number of inquiries from potential purchase partners about how the Program works and how Spatial Information Infrastructure (SII) and the Department of Sustainability and Environment (DSE) contribute to it.

Below is a brief outline of how projects are established and the role SII plays in coordinating the acquisition of imagery.

The CIP Team looks for multiple purchase partners over a common area to provide cost effectiveness to the participants, that is, a reduction in costs to each partner.

Where only one purchase partner is involved, the partner should assume they will have to pay 100% of the cost of the imagery. In such cases this cost would be the same whether the organization purchases through CIP or not, provided the specifications are the same of course.

However, in the event that there is only one purchase partner, the CIP Team will contact other potential purchase partners on their behalf, to endeavour to get a partnership arrangement and thereby reduce the costs to individual partners.

For this purpose, CIP maintains a comprehensive contacts database to assist with bringing likely purchase partners together.

The Department of Sustainability & Environment's (DSE) in-kind contribution includes:

- Provision of Aerial Photography/DEM advice to partners.
- Assisting partners with the design of appropriate project specifications.
- Bringing potential purchase partners together via roadshows and correspondence.
- Designing efficient photography projects taking into account areas of overlap of past and concurrent photography projects.
- Drafting projects for quotation and negotiating with suppliers.
- Rigorous and probity-checked tender and evaluation processes.
- General project/contract management.
- Quality assurance of data, including spatial accuracy test.
- Review and validation of deliverables specified in contracts.
- Storage and archiving of imagery products.
- Customisation for individual needs where applicable; and
- Management of intellectual property.

In total, this contribution amounts to over \$800,000.00 per annum.

In 2006/07 SII and DSE are partners across some imagery/DEM projects and have contributed over \$170,000 to these acquisitions. Contributions are made based on available budget, and are assessed on a case by case basis.

Longer Term CIP Objective

A longer term objective of the CIP is to generate revenue from the wider distribution of imagery to fund future imagery acquisitions. To this end a CIP Trust account has been established, into which royalties from sales of imagery are paid. These royalties are to be used only for future acquisitions.

Criteria for Partnering in CIP Projects

As users of imagery become aware of the CIP archive and what is available, it is expected that incoming royalties will gradually increase, which would allow CIP more flexibility to partner in projects.

Basic criteria will be applied consistent with the CIP objectives to:

- coordinate imagery acquisition across the Victorian Government
- promote sharing/multiple use
- reduce cost
- improve quality; and
- obtain regular state-wide coverage.

To enable the CIP to optimise all available resources, the CIP team will:

- check whether the imagery acquisition is for emergency services/fire recovery type work;
- look at funding where there are sound reasons why Government would benefit from such acquisitions and no other partners or partnerships can be identified to cover purchase costs;
- check whether the CIP has been a partner to acquisitions in this area / for these partner(s) before;
- apportion money equitably to each project, where equal priorities between competing projects are identified; and
- check whether the imagery acquisition could cover gaps in otherwise contiguous areas.

The Image Web Server (IWS)

The Image Web Server (IWS) is scheduled for release on 28 February 2007.

The IWS is a secured and centralised store for aerial photography, satellite imagery and digital maps. The Government's vast array of historical and new imagery, including the latest aerial photography acquired by business units via the CIP, will all be available on the IWS. Users will be able to view this rich source of information via Internet Explorer or integrate it with a variety of mapping and GIS applications.

Accessing imagery via the IWS will save the Government in duplicated effort and infrastructure costs with benefits realised by many Government Departments and Agencies.

SII will manage a staged rollout to interested parties from March 2007.

Contact Us

If you are interested in learning more about the CIP or acquiring imagery, please contact a CIP representative on 03 8636 2355, or alternatively via email at Coordinated.Imagery@dse.vic.gov.au.

You could also visit the CIP Website: <http://www.dse.vic.gov.au> – click on the links –

- Property Titles and Maps
- Aerial Photos and Satellite Imagery
- Coordinated Imagery Program.