

# Coordinated Imagery Program

Newsletter No. 4/May 2007

## Update

### 2006-07 Project Status

The table below lists all 2006-07 Projects and their status in terms of acquisition and delivery. The list also includes projects currently being considered for 2007-8 and their status in terms of RFQ and acquisition.

Project Title	Acquisition Status	Delivery Status
2007 East Gippsland Project	Postponed to 2007-08	
2007 North Central Low Resolution Project	Completed	Not Delivered - delayed
2007 Shire of Nillumbik Project	Completed	Not Delivered - delayed
2007 City Of Kingston	Completed	Completed
2007 Port Phillip and Western Port Lidar Project	Underway	
2007 Macalister River Project	Completed	Completed
2007 Tallangeira Fire Recovery Project	Completed	Completed
2007 Greater Melbourne and Geelong	Completed	Completed
2006 Casterton-Dergholm and Little Desert Fires	Completed	Completed
2007 Great Divide Fire Recovery Project - North	Completed	Not Delivered - delayed
2007 Gippsland Project	Partially Completed	Partially Delivered
2007 South West Project	Completed	Not Delivered – on schedule
2007-08 Coastal Erosion & Mornington Project	Underway	
2007 Casey and Cardinia LGA Project	Completed	Completed
2007 Kilmore, Wallan, Kinglake and Baw Baw Project	Completed	Partially Delivered
2007 North East and Alpine Project	Completed	Not Delivered - delayed
2007 Surf Coast Shire Project	Completed	Not Delivered - delayed
2007 Great Divide Fire Recovery Project - South	Completed	Not Delivered - delayed
2007 City Of Yarra Project	Completed	Completed
2007 Goulburn Broken Project	Completed	Partially Delivered
2007 North Central High Resolution Project	Underway	On schedule

**2007-08 Project Status**

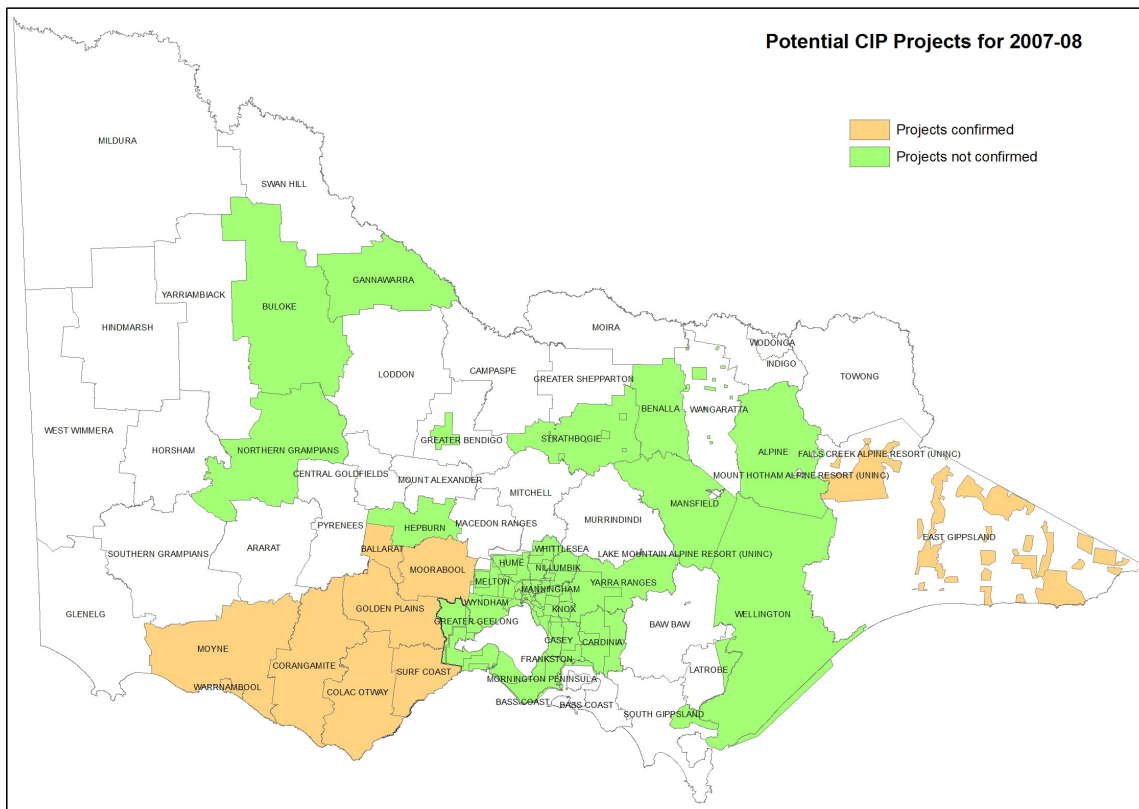
Project Title	Quote Status	Acquisition Status
<u>2008 Corangamite CMA Region Project</u>	<u>Quotes Received</u>	
<u>2008 Albury – Wodonga Project</u>	<u>RFQ out</u>	
<u>2008 Strathbogie – Benalla Project</u>	<u>Developing RFQ</u>	

**2007-08 Expressions of Interest**

Expressions of interest are currently being sought for 2007-08. It would be preferable for interested acquisition partners to contact the CIP team before end of July 2007 to discuss their requirements.

The map below shows projects postponed / cancelled last year which may be flown in 2007-08.

The yellow area shows projects which are confirmed by partners (including Melbourne Metro as captured each year as part of Urban Growth monitoring).



**2007 Port Phillip and Western Port LiDAR Project**

The 2007 Port Phillip and Western Port LiDAR Project is currently underway collecting high accuracy LiDAR data including both on and off shore areas. This project is a good example of CIP’s collaborative approach to data acquisition as well as introducing a new type of acquisition to CIP.

Initially the project started with a number of local government councils and a water utility approaching CIP looking to purchase LiDAR data over a common area. Through CIP’s efforts further purchase partners committed sufficient funds to significantly increase the size and accuracy of the project. This project has since developed into a large acquisition project with purchase partners including Local Government, Water Utilities and DSE, and as a result has increased the captured area to five times the original area.

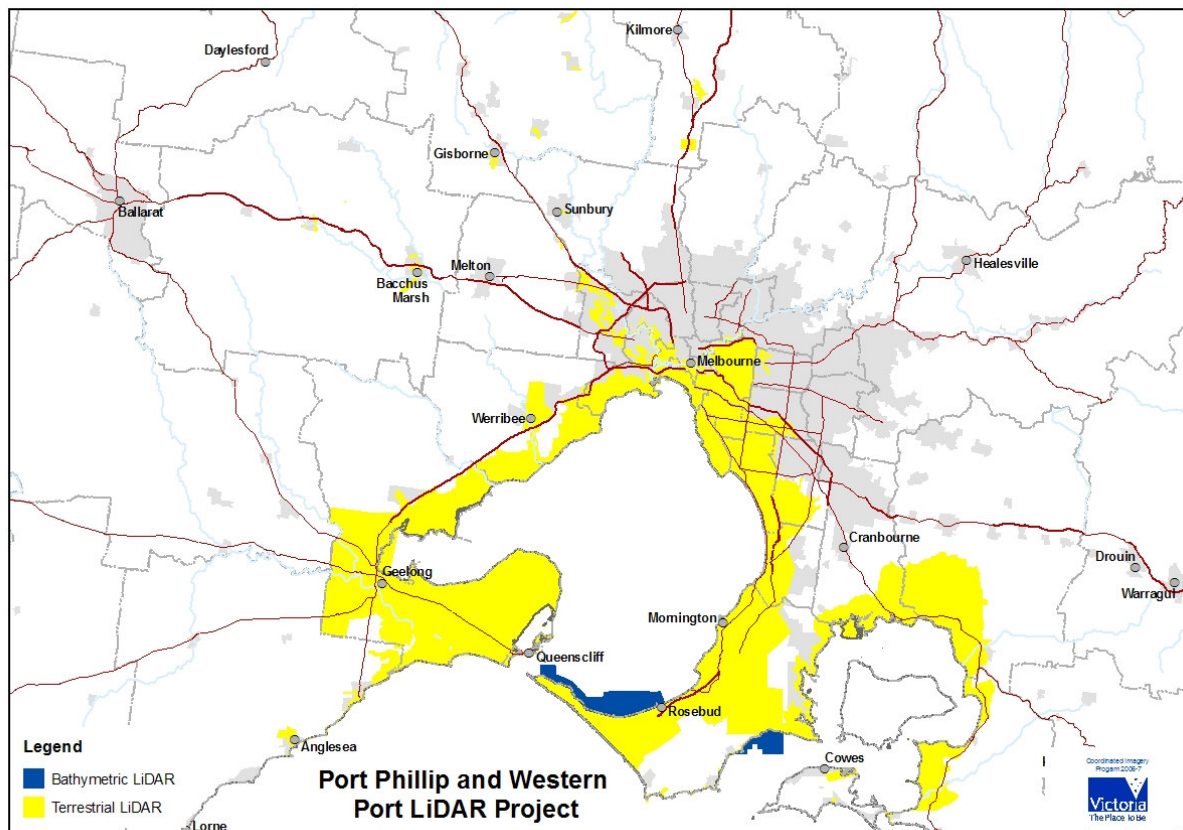
### 3.

The project is capturing both terrestrial LiDAR and bathymetric LiDAR for a wide range of purposes including Urban planning, coastal erosion and climate change.

Contours of 0.5m intervals are being derived from terrestrial LiDAR. Ground and last return surface models are also being created. This data will be used for a variety of projects including the assessment of coastal erosion over consecutive years, flood modelling in urban areas and the differentiation of tree and building heights.

Bathymetric LiDAR or Laser Airborne Depth Sounding (LADS) is a technology new to CIP which enables the collection of the sea bed information to a depth of about 50m. This is exciting for CIP and DSE as it is a source of information representing the sea bed surface not previously acquired through the program. The amount of detail on the sea bed is expected to be used by purchase partners to assist with modelling of coastal erosion, and coastal storm surges to inland areas and may even help better define Victoria's Coastline.

It is also hoped that the LADS and LiDAR data can be integrated to form a continuous or near continuous elevation model from below sea level through to the land. If this can be achieved it will provide the technology to map a previously unmapped part of Victoria, that is, the strip of land between High Water Mark and Low Water Mark. The CRC-SI has been engaged to evaluate the use of LADS for this purpose and to develop guidelines for its future use.



### **The Image Web Server (IWS)**

The Image Web Server is now available for Victorian Government Departments and Agencies.

The Implementation stage is complete, with SII managing a staged rollout to interested parties from March 2007. To date Parks Victoria, the Country Fire Authority, BIF Partners, and North Central and North East Catchment Authorities are partners using the IWS, with the Department of Human Services expected to come on board soon.

### **Property Information Program (PIP) Workshops**

The Property Information Program Team recently ran a series of workshops in the following Regional areas of Victoria: Warracknabeal, Port Fairy, Morwell, Dandenong, Kyneton, Wangaratta and Moonee Valley. CIP Representatives attended to provide briefings on the Program, particularly updates on status of fitness for purpose of imagery, and the impact of quality on the final price.

Feedback received from attendees was generally positive, however the need to address and be clear on user licence, the availability of indicative prices, more planning for future acquisition cycles and variations to payment options, were the main issues raised.

These issues are presently being addressed with the aim to produce fact sheets and guidelines to be placed on the CIP Web Page.

### **Contact Us**

If you are interested in learning more about the CIP or acquiring imagery, please contact a CIP representative on 03 8636 2355, or alternatively via email at [Coordinated.Imagery@dse.vic.gov.au](mailto:Coordinated.Imagery@dse.vic.gov.au).

You could also visit the CIP Website: <http://www.dse.vic.gov.au> – click on the links –

- Property Titles and Maps
- Aerial Photos and Satellite Imagery
- Coordinated Imagery Program.