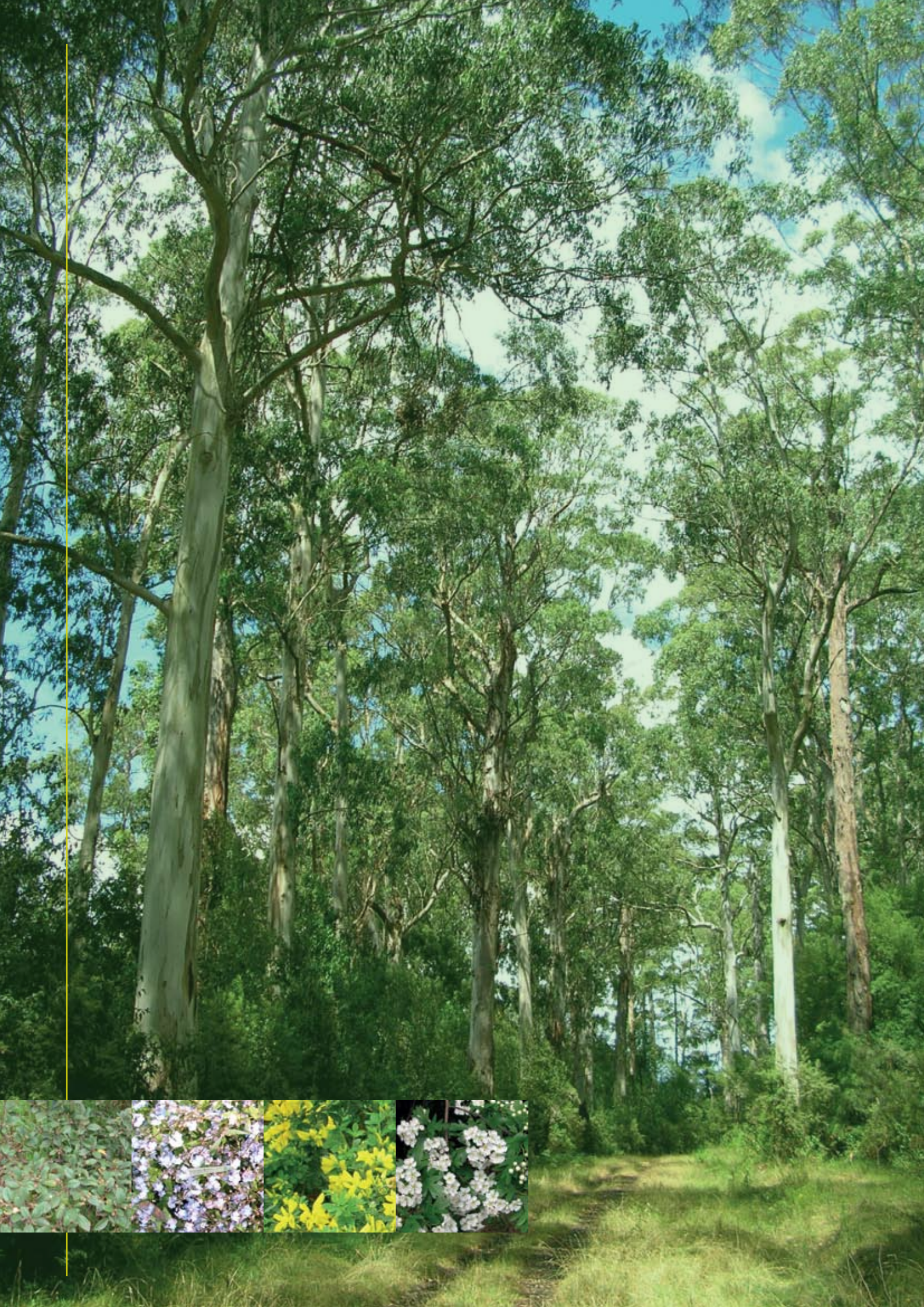


Advisory list of
environmental weeds
of the Ranges bioregions
of Victoria





Advisory list of environmental weeds of the Ranges bioregions of Victoria

Contents

Introduction	1
Purpose of the list	1
Limitations	1
Relationship to statutory lists	1
Composition of the list and assessment of taxa	2
Categories of environmental weeds	5
Arrangement of the list	5
Column 1: Botanical Name	5
Column 2: Common Name	5
Column 3: Ranking Score	5
Column 4: Listed in the CALP Act 1994	5
Column 5: Victorian Alert Weed	5
Column 6: National Alert Weed	5
Column 7: Weed of National Significance	5
Statistics	5
Further information & feedback	6
Your involvement	6
Links:	6
Weed identification texts:	6
Citation	6
Acknowledgments	6
Bibliography	6
Appendix 1 Environmental weeds of the Ranges bioregions of Victoria listed alphabetically within risk categories	7
Appendix 2 Environmental weeds of the Ranges bioregions of Victoria listed by botanical name	19
Appendix 3 Environmental weeds of the Ranges bioregions of Victoria listed by common name	31





Published by the Victorian Government Department of Sustainability and Environment
Melbourne, May 2009

© The State of Victoria Department of Sustainability and Environment 2009

This publication is copyright. No part may be reproduced by any process except in accordance with the provisions of the *Copyright Act 1968*.

Authorised by the Victorian Government, 8 Nicholson Street, East Melbourne.

ISBN 978-0-0751362-7-0

For more information contact the DSE Customer Service Centre 136 186

Disclaimer

This publication may be of assistance to you but the State of Victoria and its employees do not guarantee that the publication is without flaw of any kind or is wholly appropriate for your particular purposes and therefore disclaims all liability for any error, loss or other consequence which may arise from you relying on any information in this publication.

Accessibility

If you would like to receive this publication in an accessible format, such as large print or audio, please telephone 136 186, 1800 122 969 (TTY), or email customer.service@dse.vic.gov.au

www.dse.vic.gov.au/weeds



Introduction

Weeds are one of the greatest risks to our native bushland, national parks and forests. In a global context, invasive plants are the second greatest threat to maintenance of biodiversity, as they compete with and displace native species, disrupt ecological processes such as fire and soil erosion patterns, and may alter the genetic composition of native plant populations (Carr 1993). This advisory list will help everyone who protects these values by assisting them to understand the relative risks posed by different invasive plant species and to concentrate their efforts on the species that pose the highest risk.

Preventing new weeds from becoming established is the highest priority. This can be done by remaining alert and reporting new occurrences. This list may not include species in this category, as they are yet to be assessed. (EWWG 2007)

There are at least 970 taxa (species, subspecies, varieties, hybrids) of weeds that are established in native vegetation in Victoria. Around 580 of these threaten biodiversity, landscape and/or social values. These species are the subject of the advisory lists. A species may be a high risk to the Ranges vegetation but may be much less significant as a weed in a wet forest. The relative risk each weed poses has been assessed based on the potential effects they have in different bioregions.

Many more species have been introduced to the State and some of these are likely to escape their current confines, such as a garden or aquarium, and establish in the wild. As around 10 new species of plant naturalise in Australia each year (Groves *et al.* 2005), any advice concerning the status of weeds in Victoria must be considered as dynamic and will be further refined over time as our knowledge about weeds improves.

This list is based on expert opinion. We welcome and value feedback about the impacts of weeds in different ecosystems so that the list can be further refined.

In Australia, invasive plants cost the economy \$4 billion per annum in lost production, contamination and control costs, with most of these costs occurring in food production regions (Sinden *et al.* 2004). In 2006–2007 in Victoria, invasive plants were estimated to cost the agricultural sector \$253 million per annum with costs mostly attributed to reduced productivity and direct costs of control (Australian Bureau of Statistics). Although the impact of invasive plants on biodiversity assets is enormous, the financial value of these losses defies ready calculation. Current costs of invasive plants to the Victorian economy are conservatively estimated at \$300 million per annum.

Purpose of the list

This list is intended to provide general advice on the current and potential risk associated with plants naturalised in native vegetation.

The information in these lists may assist in the development of weed management plans, priority allocation of tasks and resources associated with weed control, management and extension activities, and policy development.

Weed lists of this type serve to increase awareness of weed invasions and may encourage community members, non-government organisations, local government and industry to become involved in weed management activities associated with invasions in native vegetation.

These lists are relevant to the Ranges bioregions of Victoria (Figure 1). Advisory lists are also available for the inland plains, mallee and coastal bioregions of Victoria. A state-wide advisory list of aquatic weeds is also available.

The invasive plants documented in this list are ranked to indicate priority for control or management in native vegetation. A scoring system based on five key attributes was used to score and group species into priority categories.

Limitations

- Some species will not be listed as they are new and emerging and have not yet been recorded as naturalised.
- Rankings are based on expert opinion and should be seen as a guide only.
- Environmental changes, such as climate change, introduction of new pollinators or changed land-use can affect the risks posed by exotic plants.

Relationship to statutory lists

The primary piece of legislation relating to weed management is the *Catchment and Land Protection Act 1994* (CALP Act), which details the approach to declaring weeds as noxious. However, many weeds impacting on native vegetation have not been declared 'noxious'. For these weeds, management responsibility is contained in the environmental objectives of a range of Acts including the *Flora and Fauna Guarantee Act 1988* (FFG Act), *National Parks Act 1975* and *Sustainable Forests (Timber) Act 2004*.

This advisory list is not the same as the statutory list of weeds documented under the Victorian CALP Act. There are neither legal requirements nor legal consequences that flow from inclusion of a species in this advisory list, unless the species is already listed under other legislation, where legal requirements are implied. The CALP Act can be viewed at the Victorian Legislation and Parliamentary Documents website <http://www.dms.dpc.vic.gov.au/>



Introduction

'The invasion of native vegetation by environmental weeds' is listed as a Potentially Threatening Process under the FFG Act. Section 4 of the FFG Act states that it is the responsibility of all public authorities to have regard to the flora and fauna and management objectives of the Act.

The FFG Act also lists establishment of several environmental weeds as Potentially Threatening Processes (*Pittosporum undulatum*, *Rubus fruticosus*, *Spartina* species). This Act restricts the release or abandonment of prescribed flora into the wild. A full list of Potentially Threatening Processes is published on the DSE website (www.dse.vic.gov.au) or is available from DSE offices (Customer Service Centre tel. 136 186).

Composition of the list and assessment of taxa

This advisory list contains 646 invasive plant taxa recorded from the Otway Ranges, Strezlecki Ranges, Highlands -Southern Fall, Highlands – Far Eastern Fall, Highlands – Northern Fall, Central Victorian Uplands, Monaro Tablelands and East Gippsland Uplands bioregions (Figure 1). Collectively these are referred to as the Ranges bioregions of Victoria. Assessment of invasive plants in each of the three component bioregions was not undertaken due to time and budgetary constraints.

This advisory list is not preceded by other lists, but may change in the future as new information on the ecology, distribution or impact of particular weed species becomes available. Most plants in this advisory list are exotic plants indigenous to countries other than Australia. However, some native plants naturalised beyond their pre-settlement distribution are included in this list. Species that are poorly known in Victoria or dubiously naturalised in native vegetation have been excluded from assessment and await further evaluation. It is possible that important new and emerging weeds may be contained in this group of poorly known plants. These species may require assessment as further information and resources become available. In this advisory list, several mosses are listed but no algae, liverworts, hornworts or lichens have been included. This is indicative of the poor knowledge-base associated with the distribution, status and impact of introduced species within these groups of plants.

The species presented in this advisory list are recorded as naturalised in databases utilised by the Department of Sustainability and Environment (Flora Information System), Department of Primary Industries (Integrated Pest Management System) and Parks Victoria (Environmental Information System). While these databases contain extensive records of naturalised plants, they are far from complete. Invasive plants are generally not well represented in herbaria and records, particularly of cryptic, rare or newly arrived species, are likely to be poorly documented. Submission of new records substantiated with voucher

material to the National Herbarium of Victoria is encouraged. The Victorian Weed Spotter Network provides details on the process and linkages available for recording new invasive taxa (see <http://www.dpi.vic.gov.au>).

This advisory list focuses on weeds of native vegetation. Invasive plants that are restricted to agricultural, horticultural or urban environments have been excluded from this assessment, although the impacts of weeds in these environments can be substantial.

The ranking scores allocated to each species were generated by considering five key attributes:

- potential for invasion,
- impact on natural systems,
- area of potential distribution,
- range of susceptible habitat types, and
- rate of dispersal.

Each key attribute was allocated one of three qualitative values (Table 1). Using a sequential ordering process, each combination of scores produced a final ranking score that ranged from 1 to 243. Species with low final scores pose a higher risk to biodiversity than species with high final scores. The order of key attributes has a significant weighting effect on the final score. Attributes scored first carry more weight than those scored later in the process. In this way, high risk weeds are those that have a significant impact on the vegetation as a whole, not just grow in large numbers or replace a few native species. In addition, high risk weeds have the potential to spread into many more places than they currently occupy, and they do so faster than weeds of lesser importance. **Therefore, long-established, widespread and successful invasive plants that occupy most of their potential range, will be considered less of a risk than those that are still increasing in numbers and spreading.**

Values allocated to each key attribute were produced by a consensus process using three experienced botanists with detailed knowledge of the naturalised flora of Victoria. While every attempt has been made to allocate accurate scoring values, consensus processes are subjective and prone to error. This scoring process addresses this issue by documenting individual attribute scores, allowing modifications and re-assessment should contradictory data become available. The advisory lists are therefore dynamic and will evolve as new information or views are taken into consideration.

Formal risk evaluation using the Victorian Weed Risk Assessment Process (Weiss & McLaren 2002) provides a sophisticated, evidence-based scoring for the invasion potential of plants in Victoria. This process is essential for consideration of plants for listing under the CALP Act. Formal evaluation requires greater resource investment than the methods used for the preparation of advisory lists. However, advisory lists can help prioritise the selection of species destined for formal weed risk assessment.

Figure 1. Ranges bioregions

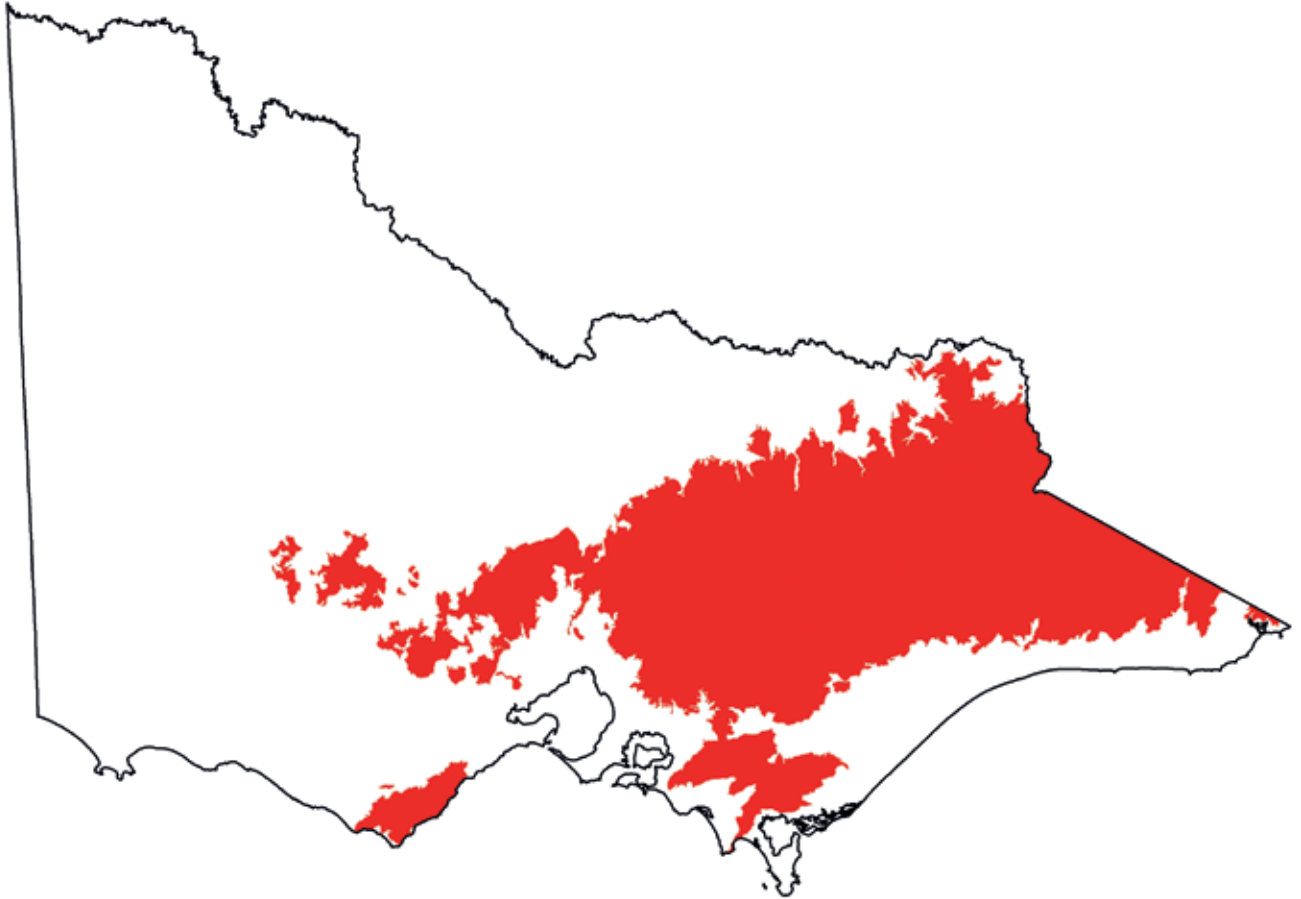


Table 1. Score allocation criteria for five key attributes.

Key attribute	Scoring criteria
Potential for invasion	<p>A measure of the ability to invade and persist in natural ecosystems. Native species were scored in their naturalised and adventive¹ range only. Species considered non-invasive in native vegetation were excluded from further assessment. Many species were segregated for further assessment pending additional information or evaluation as they could not be scored with current knowledge.</p> <p>Scores</p> <p><i>High</i> Species that readily establish in native vegetation.</p> <p><i>Medium</i> Species with limited capacity to establish in native vegetation</p> <p><i>Low</i> Species with poor ability to establish and persist in native vegetation. Species considered incapable of invading native vegetation were excluded from further assessment.</p>
Impact on natural systems	<p>A measure of the ecological consequences following invasion and establishment.</p> <p>Scores</p> <p><i>High</i> Species with the ability to cause acute disruption to ecological processes, dominate vegetation strata and cause severe loss of biodiversity. Rates of biomass accumulation are generally high. Multiple cases of invasion with high impact consequences are known or documented.</p> <p><i>Medium</i> Species with the ability to invade native vegetation with low levels of disturbance and cause loss of biodiversity. Moderate to high rates of biomass accumulation. Cases of invasion are known or the potential to cause biodiversity losses are considered sufficient to warrant suppression.</p> <p><i>Low</i> Species naturalised in native vegetation, but causing minimal disruption to ecological processes, losses to biodiversity or their presence is of a transient nature or minimal.</p>
Area of potential distribution	<p>A measure of the area of unoccupied but potentially suitable habitat available.</p> <p>Scores</p> <p><i>Extensive</i> The species has occupied only a small proportion of its potential distribution in Victoria and few, if any constraints limit future expansion.</p> <p><i>Moderate</i> The species is well-established within its potential range but the potential for expansion or in-filling is considerable.</p> <p><i>Limited</i> The species has occupied most of its potential range in Victoria.</p>
Range of susceptible habitat types	<p>A measure of the number of susceptible vegetation communities within the study area.</p> <p>Scores</p> <p><i>High</i> Broad range of vegetation communities susceptible to invasion. Some vegetation communities may be more vulnerable than others.</p> <p><i>Medium</i> A moderate range of susceptible vegetation communities.</p> <p><i>Low</i> Habitat specialists. While the number of susceptible vegetation communities may be low, the impact within those susceptible vegetation communities can still be substantial.</p>
Rate of dispersal	<p>Scoring of human-assisted spread was avoided in this assessment. Scoring was based on non-human means of dispersal (e.g. wind or by birds).</p> <p>Scores</p> <p><i>Rapid</i> Dispersal is rapid and the species is capable of long-distance transport. This is usually associated with species with very small seeds, bird-dispersed seeds or wind-dispersed seeds.</p> <p><i>Moderate</i> Long-distance dispersal is uncommon with most dispersal within confined distances from the parent population, for example, water-dispersed seed.</p> <p><i>Slow</i> Species with short dispersal ranges; mostly species that propagate only by asexual means or produce large seeds that are not transported widely by wind, animals or water.</p>

1. "Adventive", as used here, means a species that is not native to and not fully established in a new habitat or environment; locally or temporarily naturalized

Introduction

An example of scoring attributes:

Botanical name	Potential for invasion	Impact on natural systems	Area of potential distribution	Range of susceptible habitats	Rate of dispersal	Ranking score
<i>Senecio angulatus</i>	H	H	M	H	L	12
<i>Solanum linnaeanum</i>	H	M	M	H	M	38
<i>Solanum pseudocapsicum</i>	H	M	M	H	H	37
<i>Sparaxis bulbifera</i>	H	H	M	H	L	12

Categories of environmental weeds

Final ranking scores for environmental weeds were grouped into five categories. The score range for each class is as follows:

Ranking Score range	Name
1–30	<i>Very High Risk Weeds</i>
31–60	<i>High Risk Weeds</i>
61–90	<i>Moderately High Risk Weeds</i>
91–120	<i>Medium Risk Weeds</i>
121–243	<i>Lower Risk Weeds</i>

While final scores within each class indicate relative importance, it is recommended that weed categories rather than individual scores be used to influence management or policy directions.

Arrangement of the list

This list is presented in three formats. The first lists environmental weeds alphabetically within risk categories (Appendix 1). The second lists the same species by alphabetical order using their botanical name (Appendix 2). The third lists the same species by alphabetical order using their common name (Appendix 3).

Column 1: Botanical Name

The taxonomy and nomenclature used in this list are based on *A Census of the Vascular Plants of Victoria* (Walsh & Stajsic 2007) and subsequent advice from the National Herbarium of Victoria. Ranking scores for invasive plants with more than one variety or cultivar have not been separately undertaken.

Column 2: Common Name

The common names listed are mostly those provided in authoritative publications, particularly the *Flora Information System* (FIS) of DSE, (the FIS is the only comprehensive list of common names in the state), *Flora of Victoria* (Walsh & Entwisle 1994, 1996, 1999), *A Handbook of Plants in Victoria* (Willis 1970, 1973) and other national, state and regional floras. The comprehensive text *A global compendium of weeds* (Randall 2002) was also utilised as a source for common names. In some cases, floras from the countries of origin of naturalised plants were utilised when no Australian name could be located.

Column 3: Ranking Score

The ranking score for each species was generated by considering five key attributes and allocating one of three qualitative values. A sequential ordering process allocated a score within the range of 1 to 243. This provides an importance rank.

Column 4: Listed in the CALP Act

A ✓ indicates that the species is listed in the CALP Act and as such there are legal requirements associated with its trade, spread, management or control (<http://www.dse.vic.gov.au>).

Column 5: Victorian Alert Weed

A ✓ indicates that the species is listed as a Victorian Alert Weed and is under voluntary management schemes organised by the Victorian Department of Primary Industries (<http://www.dpi.vic.gov.au>).

Column 6: National Alert Weed

A ✓ indicates that the species is listed as a National Alert Weed (<http://www.weeds.gov.au/weeds/lists/alert.html>) or National Sleeper Weed (<http://www.weeds.gov.au/weeds/lists/sleeper.html>).

Column 7: Weed of National Significance

A ✓ indicates that the species is listed as a Weed of National Significance (www.weeds.org.au/natsig.htm).

Statistics

Category	Very High Risk Weeds	High Risk Weeds	Moderately High Risk Weeds	Medium Risk Weeds	Lower Risk Weeds
Total number of species	60	45	15	109	416
CALP Act listed	13	3	2	17	23
Victorian Alert Weeds	5	0	2	0	2
National Alert species	2	0	0	0	1
Weeds of National Significance	6	0	1	1	1

Further information & feedback

Your involvement

You are invited to contribute to preventing the establishment of new weeds and assisting in the control of established weeds. You can assist in prevention by addressing the sources of weeds (around 66% have garden origins; Groves *et al.* 2005), volunteering to assist in Weed Spotting (see www.dpi.vic.gov.au) and helping land managers with weed control.

We welcome comments on, and evidence supporting, the relative risk of species in different bioregions (DSE Customer Service Centre tel. 136 186).

Links:

- Weed identification tool
– <http://www.weeds.org.au/weedident.htm>
- Growing low impact garden plants
– <http://www.weeds.org.au/escapees.htm>
- Sustainable Gardening Australia
– <http://www.sgaonline.org.au/>

Weed identification texts:

- Carr, G.W. (1993). Exotic flora of Victoria and its impact on indigenous biota in *Flora of Victoria* Volume 1. (eds D.B. Foreman and N.G. Walsh). Inkata Press, Melbourne, Victoria.
- Blood, K. (2001). *Environmental Weeds—A field guide for SE Australia*. Cooperative Research Centre for Weed Management Systems, Adelaide. C H Jerram (Science Publishers), Mt Waverley, Victoria.
- Muyt, A. (2001). *Bush Invaders of South-East Australia – A guide to the identification and control of environmental weeds found in South-east Australia*. RG and FJ Richardson, Meredith, Victoria.
- Navie, S. and Adkins, S. (2008). *Environmental Weeds of Australia – An interactive identification and information resource for over 1000 invasive plants*. Centre for Biological Information Technology, The University of Queensland, Brisbane, Queensland.
- Richardson, F.J., Richardson, R.G. and Shepherd, R.C.H. (2006). *Weeds of the South-east—An identification guide for Australia*. R.G. and F.J. Richardson, Meredith, Victoria.
- Sinden, J., Jones, R., Hester, S., Odom, D., Kalisch, C., James, R. and Cacho, O. (2004). *The economic impact of weeds in Australia*. CRC for Australian Weed Management Technical Series No. 8. 55 pp.

Citation

- Adair, R., Cheal, D., White, M. (2008). Advisory list of environmental weeds in the Ranges bioregions of Victoria. <http://www.dse.vic.gov.au/>

Acknowledgments

- Stephen Platt and Anne Dennis (DSE) provided guidance and comment in the development of this advisory list. Paul Gullan (Viridans Pty Ltd) provided constructive critical comment in the development of this document. Robin Adair (DPI) provided photographs. This list was initially supported with funding from the Weeds and Pests on Public Land Initiative.

Bibliography

- Environmental Weed Working Group. (2007). *Guidelines and procedures for managing the environmental impacts of weeds on public land in Victoria 2007*. Department of Sustainability and Environment, Melbourne.
- Groves, R.H., Boden, R. and Lonsdale, W.M. (2005). *Jumping the garden fence. Invasive garden plants in Australia and their environmental and agricultural impacts*. CSIRO report prepared for WWF-Australia. WWF-Australia, Sydney.
- Randall, R. (2002). A global compendium of weeds. R.G. & F.J. Richardson. 905 pp.
- Walsh, N.G. and Entwistle, T.J. (eds) (1994, 1996, 1999). *Flora of Victoria* Volumes 2 to 4. Inkata Press, Melbourne.
- Walsh, N. G. and Stajsic, V. (2007). *A Census of the Vascular Plants of Victoria*. Royal Botanic Gardens and National Herbarium, South Yarra.
- Weiss, J. and McLaren, D. (2002). *Victoria's pest plant prioritisation process* in Proceedings of the Thirteenth Australian Weeds Conference.
- Willis, J.H. (1970, 1973). *A Handbook of Plants in Victoria*. Melbourne University Press, Melbourne.

Appendix 1

Environmental weeds of the Ranges bioregions of Victoria listed alphabetically within risk categories

Botanical Name	Common Name	Ranking Score	CALP Act	Vic Alert Weed	National Alert Weed	WONS
VERY HIGH RISK WEEDS						
<i>Acer negundo</i>	Box-elder Maple	1				
<i>Hedera helix</i>	English Ivy	1				
<i>Lonicera japonica</i>	Japanese Honeysuckle	1				
<i>Crocsmia X crocosmiiflora</i>	Montbretia	3				
<i>Cytisus scoparius</i>	English Broom	3	✓			
<i>Rubus anglocandicans</i>	Blackberry	4	✓			✓
<i>Rubus cissburiensis</i>	Blackberry	4	✓			✓
<i>Rubus erythrops</i>	Blackberry	4	✓			✓
<i>Rubus laciniatus</i>	Cut-leaf Bramble	4	✓			✓
<i>Rubus leucostachys</i>	Blackberry	4	✓			✓
<i>Rubus polyanthemus</i>	Blackberry	4	✓			✓
<i>Rubus rosaceus</i>	Blackberry	4	✓			✓
<i>Rubus ulmifolius</i>	Blackberry	4	✓			✓
<i>Rubus vestitus</i>	Blackberry	4	✓			✓
<i>Pinus radiata</i>	Radiata Pine	6				
<i>Asparagus asparagoides</i>	Bridal Creeper	10	✓			✓
<i>Coprosma robusta</i>	Karamu	10				
<i>Cotoneaster divaricatus</i>	Spreading Cotoneaster	10				
<i>Cotoneaster franchetii</i>	Grey Cotoneaster	10				
<i>Cotoneaster glaucophyllus</i>	Large-leaf Cotoneaster	10				
<i>Cotoneaster pannosus</i>	Velvet Cotoneaster	10				
<i>Cotoneaster simonsii</i>	Himalayan Cotoneaster	10				
<i>Fallopia japonica</i>	Japanese Knotweed	10	✓	✓		
<i>Fallopia sachalinensis</i>	Giant Knotweed	10	✓	✓		
<i>Ilex aquifolium</i>	English Holly	10				
<i>Leycesteria formosa</i>	Himalayan Honeysuckle	10				
<i>Pittosporum undulatum</i>	Sweet Pittosporum	10				
<i>Salix cinerea</i>	Grey Sallow	10	✓			✓
<i>Acer pseudoplatanus</i>	Sycamore Maple	11				
<i>Clematis vitalba</i>	Traveller's Joy	11		✓		
<i>Erica lusitanica</i>	Spanish Heath	11				
<i>Fraxinus angustifolia</i>	Desert Ash	11				
<i>Genista monspessulana</i>	Montpellier Broom	11	✓			
<i>Passiflora tarminiana</i>	Banana Passion-fruit	11				
<i>Allium triquetrum</i>	Angled Onion	12	✓			
<i>Equisetum spp.</i>	Horsetail	12	✓	✓	✓	
<i>Genista linifolia</i>	Flax-leaf Broom	12	✓			
<i>Chrysanthemoides monilifera</i>	Boneseed	13	✓			✓
<i>Crataegus monogyna</i>	Hawthorn	13				
<i>Ulex europaeus</i>	Gorse	15	✓			✓
<i>Vinca major</i>	Blue Periwinkle	15				
<i>Watsonia meriana</i>	Bugle Lily	15	✓			
<i>Asparagus scandens</i>	Asparagus Fern	19				
<i>Fuchsia magellanica</i>	Fuchsia	19				
<i>Hieracium aurantiacum</i>	Orange Hawkweed	19	✓	✓	✓	
<i>Carex divisa</i>	Divided Sedge	20				
<i>Glyceria declinata</i>	Manna Grass	20				
<i>Glyceria maxima</i>	Reed Sweet-grass	20				
<i>Glyceria notata</i>	Floating Sweet-grass	20				
<i>Myosotis sylvatica</i>	Wood Forget-me-not	20				
<i>Ranunculus repens</i>	Creeping Buttercup	20				
<i>Tradescantia fluminensis</i>	Wandering Jew	20				
<i>Vinca minor</i>	Lesser Periwinkle	21				
<i>Zantedeschia aethiopica</i>	White Arum-lily	21				
<i>Salix alba</i>	White Willow	22	✓			✓

Appendix 1 Environmental weeds of the Ranges bioregions of Victoria listed alphabetically within risk categories

Botanical Name	Common Name	Ranking Score	CALP Act	Vic Alert Weed	National Alert Weed	WONS
<i>Salix purpurea</i>	Purple Osier	22	✓			✓
<i>Salix babylonica</i>	Weeping Willow	23				
<i>Salix fragilis</i>	Crack Willow	23	✓			✓
<i>Salix X rubens</i>	Basket Willow	23	✓			✓
<i>Callitris endlicheri</i>	Black Cypress-pine	24				
HIGH RISK WEEDS						
<i>Anthoxanthum odoratum</i>	Sweet Vernal-grass	31				
<i>Ageratina ligustrina</i>	Ageratina	37				
<i>Solanum triflorum</i>	Cut-leaf Nightshade	37				
<i>Sollya heterophylla</i>	Bluebell Creeper	37				
<i>Scabiosa atropurpurea</i>	Pincushion	38				
<i>Acacia baileyana</i>	Cootamundra Wattle	39				
<i>Acacia elata</i>	Cedar Wattle	39				
<i>Berberis darwinii</i>	Darwin's Barberry	39				
<i>Euryops abrotanifolius</i>	Winter Euryops	39				
<i>Lamium galeobdolon</i>	Aluminium Plant	39				
<i>Mahonia aquifolium</i>	Oregon Grape	39				
<i>Oxalis incarnata</i>	Pale Wood-sorrel	39				
<i>Agrostis stolonifera</i>	Creeping Bent	40				
<i>Ehrharta erecta</i>	Panic Veldt-grass	40				
<i>Ehrharta longiflora</i>	Annual Veldt-grass	40				
<i>Trifolium repens</i>	White Clover	41				
<i>Acacia decurrens</i>	Early Black-wattle	42				
<i>Acetosella vulgaris</i>	Sheep Sorrel	43				
<i>Hypericum perforatum</i>	St John's Wort	43	✓			
<i>Vulpia bromoides</i>	Squirrel-tail Fescue	43				
<i>Vulpia ciliata</i>	Fringed Fescue	43				
<i>Briza maxima</i>	Large Quaking-grass	44				
<i>Artemisia verlotiorum</i>	Chinese Wormwood	46				
<i>Juncus effusus</i>	Soft Rush	46				
<i>Olea europaea</i>	Olive	46				
<i>Coreopsis lanceolata</i>	Common Tickseed	47				
<i>Medicago lupulina</i>	Black Medic	47				
<i>Selaginella kraussiana</i>	Garden Selaginella	47				
<i>Gladiolus undulatus</i>	Wild Gladiolus	48				
<i>Sparaxis bulbifera</i>	Harlequin Flower	48				
<i>Sparaxis tricolor</i>	Tricolor Harlequin-flower	48				
<i>Lycium ferocissimum</i>	African Box-thorn	49	✓			
<i>Vulpia fasciculata</i>	Dune Fescue	49				
<i>Vulpia muralis</i>	Wall Fescue	49				
<i>Juncus tenuis</i>	Slender Rush	50				
<i>Mimulus moschatus</i>	Musk Monkey-flower	50				
<i>Aster subulatus</i>	Aster-weed	52				
<i>Holcus lanatus</i>	Yorkshire Fog	52				
<i>Juncus acutus</i>	Spiny Rush	52				
<i>Juncus articulatus</i>	Jointed Rush	52				
<i>Trifolium angustifolium</i>	Narrow-leaf Clover	52				
<i>Trifolium arvense</i>	Hare's-foot Clover	52				
<i>Vulpia myuros</i>	Rat's-tail Fescue	52				
<i>Cyperus eragrostis</i>	Drain Flat-sedge	53				
<i>Hypericum tetrapterum</i>	St Peter's Wort	53	✓			
MODERATE RISK WEEDS						
<i>Ligustrum lucidum</i>	Large-leaf Privet	64				
<i>Arbutus unedo</i>	Irish Strawberry Tree	65				
<i>Chasmanthe floribunda</i>	African Cornflag	66				
<i>Coprosma repens</i>	Mirror Bush	73				

Appendix 1 Environmental weeds of the Ranges bioregions of Victoria listed alphabetically within risk categories

Botanical Name	Common Name	Ranking Score	CALP Act	Vic Alert Weed	National Alert Weed	WONS
<i>Cortaderia jubata</i>	Pink Pampas-grass	73				
<i>Cortaderia selloana</i>	Pampas Grass	73				
<i>Salix nigra</i>	Black Willow	73	✓			✓
<i>Phalaris arundinacea</i>	Reed Canary-grass	74				
<i>Sorbus aucuparia</i>	Rowan	74				
<i>Opuntia aurantiaca</i>	Tiger Pear	75				
<i>Opuntia stricta</i>	Common Prickly-pear	75	✓			
<i>Robinia pseudoacacia</i>	Locust Tree	75				
<i>Ulmus aff. procera</i>	Common Elm	75				
<i>Delairea odorata</i>	Cape Ivy	77				
<i>Acacia howittii</i>	Sticky Wattle	84				
MEDIUM RISK WEEDS						
<i>Pyracantha angustifolia</i>	Orange Firethorn	91				
<i>Pyracantha crenatoserrata</i>	Broad-leaf Firethorn	91				
<i>Pyracantha crenulata</i>	Nepal Firethorn	91				
<i>Senecio jacobaea</i>	Ragwort	91	✓			
<i>Solanum chenopodioides</i>	Whitetip Nightshade	91				
<i>Solanum douglasii</i>	Douglas' Nightshade	91				
<i>Cestrum elegans</i>	Elegant Poison-berry	92				
<i>Cestrum parqui</i>	Green Poison-berry	92				
<i>Petasites fragrans</i>	Winter Heliotrope	92				
<i>Acacia floribunda</i>	White Sallow-wattle	93				
<i>Acacia pravissima</i>	Ovens Wattle	93				
<i>Alstroemeria aurea</i>	Yellow Alstroemeria	93				
<i>Alstroemeria psittacina</i>	Peruvian Parrot-lily	93				
<i>Arisarum vulgare</i>	Common Arisarum	93				
<i>Erica arborea</i>	Tree Heath	93				
<i>Oxalis articulata</i>	Sourgrass	93				
<i>Oxalis bowiei</i>	Bowie Wood-sorrel	93				
<i>Oxalis brasiliensis</i>	Brazilian Wood-sorrel	93				
<i>Oxalis debilis</i>	Pink Shamrock	93				
<i>Oxalis latifolia</i>	Large-leaf Wood-sorrel	93				
<i>Oxalis purpurea</i>	Large-flower Wood-sorrel	93				
<i>Agrostis capillaris</i>	Brown-top Bent	94				
<i>Agrostis castellana</i>	Highland Bent	94				
<i>Nassella neesiana</i>	Chilean Needle-grass	94	✓			✓
<i>Nassella trichotoma</i>	Serrated Tussock	94	✓			
<i>Setaria verticillata</i>	Whorled Pigeon-grass	95				
<i>Oxalis pes-caprae</i>	Soursob	96	✓			
<i>Prunus cerasifera</i>	Cherry Plum	96				
<i>Prunus spinosa</i>	Blackthorn	96				
<i>Bromus hordeaceus</i>	Soft Brome	97				
<i>Bromus madritensis</i>	Madrid Brome	97				
<i>Carduus pycnocephalus</i>	Slender Thistle	97	✓			
<i>Carduus tenuiflorus</i>	Winged Slender-thistle	97	✓			
<i>Dactylis glomerata</i>	Cocksfoot	97				
<i>Cynosurus echinatus</i>	Rough Dog's-tail	98				
<i>Rosa rubiginosa</i>	Sweet Briar	98	✓			
<i>Agrostis gigantea</i>	Red-top Bent	100				
<i>Cordylina australis</i>	New Zealand Cabbage-tree	100				
<i>Fallopia convolvulus</i>	Black Bindweed	100				
<i>Juncus acuminatus</i>	Sharp-fruited Rush	100				
<i>Lycium barbarum</i>	Chinese Box-thorn	100				
<i>Sambucus nigra</i>	Common Elder	100				
<i>Solanum pseudocapsicum</i>	Madeira Winter-cherry	100				
<i>Achillea millefolium</i>	Milfoil	101				

Appendix 1 Environmental weeds of the Ranges bioregions of Victoria listed alphabetically within risk categories

Botanical Name	Common Name	Ranking Score	CALP Act	Vic Alert Weed	National Alert Weed	WONS
<i>Ballota nigra</i>	Black Horehound	101				
<i>Carex punctata</i>	Dotted Sedge	101				
<i>Isolepis prolifera</i>	Proliferous Club-sedge	101				
<i>Leersia oryzoides</i>	Rice Cut-grass	101				
<i>Pennisetum macrourum</i>	African Feather-grass	101	✓			
<i>Persicaria maculosa</i>	Redshank	101				
<i>Prunus laurocerasus</i>	Cherry Laurel	101				
<i>Prunus lusitanica</i>	Portugal Laurel	101				
<i>Ranunculus sceleratus</i>	Celery Buttercup	101				
<i>Saponaria officinalis</i>	Common Soapwort	101				
<i>Achillea distans</i>	Tansyleaf Milfoil	102				
<i>Ailanthus altissima</i>	Tree of Heaven	102	✓			
<i>Aptenia cordifolia</i>	Heart-leaf Ice-plant	102				
<i>Buddleja davidii</i>	Butterfly Bush	102				
<i>Buddleja globosa</i>	Golden Honey-balls	102				
<i>Crassula multicava</i>	Shade Crassula	102				
<i>Crassula tetragona</i>	Shrubby Crassula	102				
<i>Erica baccans</i>	Berry-flower Heath	102				
<i>Erica quadrangularis</i>	Angled Heath	102				
<i>Freesia alba x Freesia leichtlinii</i>	Freesia	102				
<i>Gladiolus tristis</i>	Evening-flower Gladiolus	102				
<i>Lampranthus immelmaniae</i>	Lampranthus	102				
<i>Lupinus arboreus</i>	Tree Lupin	102				
<i>Melissa officinalis</i>	Lemon Balm	102				
<i>Mentha X piperita</i>	Peppermint	102				
<i>Mentha X rotundifolia</i>	Apple Mint	102				
<i>Potentilla indica</i>	Indian Strawberry	102				
<i>Bromus catharticus</i>	Prairie Grass	103				
<i>Centaurea calcitrapa</i>	Star Thistle	103	✓			
<i>Disa bracteata</i>	South African Orchid	103				
<i>Marrubium vulgare</i>	Horehound	103	✓			
<i>Onopordum acanthium</i>	Scotch Thistle	103	✓			
<i>Xanthium occidentale</i>	Noogoora Burr	103	✓			
<i>Conium maculatum</i>	Hemlock	104	✓			
<i>Eschscholzia californica</i>	Californian Poppy	104				
<i>Festuca arundinacea</i>	Tall Fescue	104				
<i>Hirschfeldia incana</i>	Buchan Weed	104				
<i>Phalaris minor</i>	Lesser Canary-grass	104				
<i>Sinapis arvensis</i>	Charlock	104				
<i>Sisymbrium officinale</i>	Hedge Mustard	104				
<i>Verbena bonariensis</i>	Purple-top Verbena	104				
<i>Callitris rhomboidea</i>	Oyster Bay Pine	105				
<i>Watsonia versfeldii</i>	Pink Watsonia	105				
<i>Bromus diandrus</i>	Great Brome	106				
<i>Bromus rubens</i>	Red Brome	106				
<i>Carthamus lanatus</i>	Saffron Thistle	106	✓			
<i>Erodium botrys</i>	Big Heron's-bill	106				
<i>Erodium cicutarium</i>	Common Heron's-bill	106				
<i>Leptospermum laevigatum</i>	Coast Tea-tree	108				
<i>Conyza sumatrensis</i>	Tall Fleabane	109				
<i>Centaureum erythraea</i>	Common Centaury	115				
<i>Centaureum tenuiflorum</i>	Slender Centaury	115				
<i>Cirsium vulgare</i>	Spear Thistle	115	✓			
<i>Conyza bilbaoana</i>	Smooth Fleabane	115				
<i>Conyza bonariensis</i>	Flaxleaf Fleabane	115				
<i>Conyza canadensis</i>	Canadian Fleabane	115				

Appendix 1 Environmental weeds of the Ranges bioregions of Victoria listed alphabetically within risk categories

Botanical Name	Common Name	Ranking Score	CALP Act	Vic Alert Weed	National Alert Weed	WONS
<i>Conyza primulaefolia</i>	Rough Conyza	115				
<i>Hypochoeris radicata</i>	Flatweed	115				
<i>Sonchus asper</i>	Rough Sow-thistle	115				
<i>Sonchus oleraceus</i>	Common Sow-thistle	115				
<i>Taraxacum officinale</i>	Garden Dandelion	115				
<i>Crepis setosa</i>	Bristly Hawksbeard	118				
<i>Hypericum androsaemum</i>	Tutsan	118	✓			
<i>Senecio pterophorus</i>	African Daisy	118	✓			
<i>Acacia obtusifolia</i>	Blunt-leaf Wattle	120				
LOWER RISK WEEDS						
<i>Galium divaricatum</i>	Slender Bedstraw	122				
<i>Aira caryophylla</i>	Silvery Hair-grass	124				
<i>Aira cupaniana</i>	Quicksilver Grass	124				
<i>Aira elegantissima</i>	Delicate Hair-grass	124				
<i>Aira praecox</i>	Early Hair-grass	124				
<i>Aphanes arvensis</i>	Parsley Piert	124				
<i>Aphanes microcarpa</i>	Small Piert	124				
<i>Avellinia michelii</i>	Avellinia	124				
<i>Cotula bipinnata</i>	Ferny Cotula	124				
<i>Moenchia erecta</i>	Erect Chickweed	124				
<i>Sherardia arvensis</i>	Field Madder	124				
<i>Solanum nigrum</i>	Black Nightshade	124				
<i>Stellaria media</i>	Chickweed	124				
<i>Stellaria pallida</i>	Lesser Chickweed	124				
<i>Briza minor</i>	Lesser Quaking-grass	125				
<i>Trifolium dubium</i>	Suckling Clover	125				
<i>Trifolium glomeratum</i>	Cluster Clover	125				
<i>Pseudoscleropodium purum</i>	Neat Feather-moss	127				
<i>Cyperus brevifolius</i>	Mullumbimby Couch	128				
<i>Gomphocarpus cancellatus</i>	Broad-leaf Cotton-bush	129				
<i>Gomphocarpus fruticosus</i>	Swan Plant	129				
<i>Viola arvensis</i>	Field Pansy	129				
<i>Anagallis minima</i>	Chaffweed	130				
<i>Crassula alata</i>	Three-part Crassula	130				
<i>Gypsophila tubulosa</i>	Chalkwort	130				
<i>Juncus bulbosus</i>	Bulbous Rush	130				
<i>Acacia longifolia</i> subsp. <i>sophorae</i>	Coast Wattle	131				
<i>Nasturtium microphyllum</i>	Brown Watercress	131				
<i>Nasturtium officinale</i>	Watercress	131				
<i>Navarretia squarrosa</i>	Californian Stinkweed	131				
<i>Anagallis arvensis</i>	Pimpernel	133				
<i>Cicendia filiformis</i>	Slender Cicendia	133				
<i>Cicendia quadrangularis</i>	Square Cicendia	133				
<i>Galium murale</i>	Small Goosegrass	133				
<i>Hypochoeris glabra</i>	Smooth Cat's-ear	133				
<i>Juncus capitatus</i>	Capitate Rush	133				
<i>Vellereophyton dealbatum</i>	White Cudweed	133				
<i>Lamium amplexicaule</i>	Dead Nettle	134				
<i>Petrorhagia dubia</i>	Velvety Pink	134				
<i>Petrorhagia nanteuillii</i>	Childling Pink	134				
<i>Rumex conglomeratus</i>	Clustered Dock	134				
<i>Rumex pulcher</i>	Fiddle Dock	134				
<i>Trifolium campestre</i>	Hop Clover	134				
<i>Ligustrum ovalifolium</i>	Hedge Privet	145				
<i>Ligustrum vulgare</i>	European Privet	145				
<i>Agapanthus praecox</i>	Agapanthus	147				

Appendix 1 Environmental weeds of the Ranges bioregions of Victoria listed alphabetically within risk categories

Botanical Name	Common Name	Ranking Score	CALP Act	Vic Alert Weed	National Alert Weed	WONS
<i>Pinus nigra</i>	Corsican Pine	147				
<i>Pinus patula</i>	Patula Pine	147				
<i>Phalaris aquatica</i>	Toowoomba Canary-grass	152				
<i>Acer palmatum</i>	Japanese Maple	154				
<i>Betula aff. pubescens</i>	Birch	155				
<i>Pittosporum eugenioides</i>	Tarata	155				
<i>Acanthus mollis</i>	Bear's Breach	156				
<i>Dipogon lignosus</i>	Common Dipogon	156				
<i>Fraxinus ornus</i>	Flowering Ash	156				
<i>Opuntia ficus-indica</i>	Indian Fig	156				
<i>Opuntia monacantha</i>	Drooping Prickly-pear	156	✓			
<i>Opuntia robusta</i>	Wheel Cactus	156	✓			
<i>Picea abies</i>	Norway Spruce	156				
<i>Picea pungens</i>	Blue Spruce	156				
<i>Pinus contorta</i>	Shore Pine	156				
<i>Populus alba</i>	White Poplar	156				
<i>Populus nigra 'Italica'</i>	Lombardy Poplar	156				
<i>Populus tremula</i>	Aspen	156				
<i>Populus X canescens</i>	Grey Poplar	156				
<i>Schinus molle</i>	Pepper Tree	157				
<i>Pennisetum clandestinum</i>	Kikuyu	159				
<i>Stenotaphrum secundatum</i>	Buffalo Grass	159				
<i>Senecio angulatus</i>	Climbing Groundsel	161				
<i>Syzygium smithii</i>	Lilly Pilly	161				
<i>Callitris oblonga</i>	Dwarf Cypress-pine	162				
<i>Calystegia silvatica</i>	Greater Bindweed	162				
<i>Cerastium balearicum</i>	Balearic Mouse-ear Chickweed	172				
<i>Cerastium comatum</i>	Levantine Mouse-ear Chickweed	172				
<i>Cerastium diffusum</i>	Sea Mouse-ear Chickweed	172				
<i>Gamochaeta pensylvanica</i>	Woolly Cudweed	172				
<i>Solanum furcatum</i>	Broad Nightshade	172				
<i>Anthemis cotula</i>	Stinking Mayweed	173				
<i>Phytolacca octandra</i>	Red-ink Weed	173				
<i>Plantago australis</i>	Southern Plantain	173				
<i>Acacia fimbriata</i>	Fringed Wattle	174				
<i>Dianthus armeria</i>	Deptford Pink	174				
<i>Cerastium fontanum</i>	Common Mouse-ear Chickweed	175				
<i>Crepis capillaris</i>	Smooth Hawksbeard	175				
<i>Cynosurus cristatus</i>	Crested Dog's-tail	175				
<i>Epilobium ciliatum</i>	Glandular Willow-herb	175				
<i>Epilobium hirsutum</i>	Great Willow-herb	175		✓		
<i>Gamochaeta calviceps</i>	Silky Cudweed	175				
<i>Tolpis barbata</i>	Yellow Hawkweed	175				
<i>Lotus corniculatus</i>	Bird's-foot Trefoil	176				
<i>Lotus subbiflorus</i>	Hairy Bird's-foot Trefoil	176				
<i>Lotus uliginosus</i>	Greater Bird's-foot Trefoil	176				
<i>Myosotis discolor</i>	Yellow-and-blue Forget-me-not	176				
<i>Polycarpon tetraphyllum</i>	Four-leaved Allseed	176				
<i>Setaria parviflora</i>	Slender Pigeon Grass	176				
<i>Sisyrinchium iridifolium</i>	Striped Rush-leaf	176				
<i>Stachys arvensis</i>	Stagger Weed	176				
<i>Verbascum thapsus</i>	Great Mullein	176	✓			
<i>Verbascum virgatum</i>	Twiggy Mullein	176				
<i>Cardamine hirsuta</i>	Common Bitter-cress	178				
<i>Cerastium glomeratum</i>	Common Mouse-ear Chickweed	178				
<i>Cerastium pumilum</i>	Curtis's Mouse-ear Chickweed	178				

Appendix 1 Environmental weeds of the Ranges bioregions of Victoria listed alphabetically within risk categories

Botanical Name	Common Name	Ranking Score	CALP Act	Vic Alert Weed	National Alert Weed	WONS
<i>Cerastium semidecandrum</i> .	Mouse-ear Chickweed	178				
<i>Euphorbia peplus</i>	Petty Spurge	178				
<i>Gamochaeta purpurea</i>	Purple Cudweed	178				
<i>Hordeum hystrix</i>	Mediterranean Barley-grass	178				
<i>Hordeum leporinum</i>	Barley-grass	178				
<i>Hordeum marinum</i>	Sea Barley-grass	178				
<i>Hordeum murinum</i>	Barley-grass	178				
<i>Hordeum vulgare</i>	Barley	178				
<i>Plantago lanceolata</i>	Ribwort	179				
<i>Rumex crispus</i>	Curled Dock	179				
<i>Argemone ochroleuca</i>	Sweet Mexican Poppy	182				
<i>Ranunculus parviflorus</i>	Small-flower Buttercup	182				
<i>Ranunculus sardous</i>	Pale Hairy Buttercup	182				
<i>Aristea ecklonii</i>	Blue Stars	183				
<i>Catapodium rigidum</i>	Fern Grass	184				
<i>Centaurea melitensis</i>	Malta Thistle	184				
<i>Sagina procumbens</i>	Spreading Pearlwort	184				
<i>Alopecurus aequalis</i>	Orange Fox-tail	185				
<i>Alopecurus geniculatus</i>	Marsh Fox-tail	185				
<i>Anchusa arvensis</i>	Bugloss	185				
<i>Lepidium didymum</i>	Lesser Swine-cress	185				
<i>Lepidium strictum</i>	Matted Peppergrass	185				
<i>Oenothera stricta</i>	Common Evening-primrose	185				
<i>Ranunculus muricatus</i>	Sharp Buttercup	185				
<i>Ranunculus ophioglossifolius</i>	Snake-tongue Buttercup	185				
<i>Rumex obtusifolius</i>	Broad-leaf Dock	185				
<i>Spergula arvensis</i>	Corn Spurrey	185				
<i>Veronica anagallis-aquatica</i>	Blue Water-speedwell	185				
<i>Cynodon dactylon</i>	Couch	186				
<i>Datura stramonium</i>	Common Thorn-apple	186	✓			
<i>Digitalis purpurea</i>	Foxglove	186				
<i>Kunzea ambigua</i>	White Kunzea	186				
<i>Isolepis hystrix</i>	Awned Club-sedge	187				
<i>Parentucellia latifolia</i>	Red Bartsia	188				
<i>Parentucellia viscosa</i>	Yellow Bartsia	188				
<i>Plantago major</i>	Greater Plantain	188				
<i>Rostraria cristata</i>	Annual Cat's-tail	188				
<i>Spergularia rubra</i>	Red Sand-spurrey	188				
<i>Kunzea ericoides</i>	Burgan	189				
<i>Solanum mauritianum</i>	Wild Tobacco Tree	199				
<i>Anchusa capensis</i>	Cape Forget-me-not	200				
<i>Hypericum calycinum</i>	Aaron's Beard	200				
<i>Hypericum humifusum</i>	Trailing St John's Wort	200				
<i>Anredera cordifolia</i>	Madeira Vine	201				
<i>Hakea salicifolia</i>	Willow-leaf Hakea	201				
<i>Ipomoea indica</i>	Blue Morning-glory	201				
<i>Lavandula stoechas</i>	Topped Lavender	201	✓			
<i>Leucanthemum maximum</i>	Shasta Daisy	201				
<i>Plectranthus ciliatus</i>	African Spur-flower	201				
<i>Scolymus hispanicus</i>	Golden Thistle	202				
<i>Cytisus multiflorus</i>	White Spanish Broom	203			✓	
<i>Erophila verna</i>	Whitlow Grass	203				
<i>Vicia sativa</i>	Common Vetch	203				
<i>Calicotome spinosa</i>	Spiny Broom	204	✓			
<i>Cupressus macrocarpa</i>	Monterey Cypress	207				
<i>Centaurea nigra</i>	Black Knapweed	208	✓	✓		

Appendix 1 Environmental weeds of the Ranges bioregions of Victoria listed alphabetically within risk categories

Botanical Name	Common Name	Ranking Score	CALP Act	Vic Alert Weed	National Alert Weed	WONS
<i>Centaurea solstitialis</i>	St Barnaby's Thistle	208	✓			
<i>Ficus carica</i>	Fig	208				
<i>Rhamnus alaternus</i>	Italian Buckthorn	208				
<i>Symphoricarpos albus</i>	Snowberry	208				
<i>Ammi majus</i>	Bishop's Weed	209				
<i>Araujia sericifera</i>	White Bladder-flower	209				
<i>Axonopus fissifolius</i>	Carpet Grass	209				
<i>Juncus inflexus</i>	Hard Rush	209				
<i>Pennisetum alopecuroides</i>	Swamp Foxtail-grass	209				
<i>Pennisetum villosum</i>	Feathertop	209				
<i>Phalaris canariensis</i>	Canary Grass	209				
<i>Piptatherum miliaceum</i>	Rice Millet	209				
<i>Prunus X domestica</i>	Plum	209				
<i>Verbena rigida</i>	Veined Verbena	209				
<i>Acacia schinoides</i>	Frosty Wattle	210				
<i>Arctotis stoechadifolia</i>	White Arctotis	210				
<i>Claytonia perfoliata</i>	Miner's Lettuce	210				
<i>Cornus capitata</i>	Himalayan Strawberry-tree	210				
<i>Cotyledon orbiculata</i>	Pig's Ear	210				
<i>Erigeron karvinskianus</i>	Seaside Daisy	210				
<i>Gladiolus communis</i>	Byzantine Gladiolus	210				
<i>Ixia maculata</i>	Yellow Ixia	210				
<i>Ixia polystachya</i>	Variable Ixia	210				
<i>Lysimachia nummularia</i>	Creeping Jenny	210				
<i>Ornithogalum longibracteatum</i>	Pregnant Onion	210				
<i>Passiflora caerulea</i>	Blue Passion-fruit	210				
<i>Polygala myrtifolia</i>	Myrtle-leaf Milkwort	210				
<i>Proboscidea lutea</i>	Yellow-flower Devil's-claw	210				
<i>Psoralea pinnata</i>	Blue Psoralea	210				
<i>Tritonia crocata</i>	Orange Tritonia	210				
<i>Tritonia lineata</i>	Lined Tritonia	210				
<i>Tropaeolum majus</i>	Nasturtium	210				
<i>Watsonia borbonica</i>	Rosy Watsonia	210				
<i>Cotoneaster horizontalis</i>	Fishbone Cotoneaster	211				
<i>Erodium moschatum</i>	Musky Heron's-bill	211				
<i>Iris foetidissima</i>	Stinking Iris	211				
<i>Juncus microcephalus</i>	Tiny-headed Rush	211				
<i>Solanum physalifolium</i>	Cherry Nightshade	211				
<i>Sporobolus africanus</i>	Rat-tail Grass	211				
<i>Xanthium orientale</i>	Californian Burr	211	✓			
<i>Cyperus congestus</i>	Dense Flat-sedge	212				
<i>Cyperus difformis</i>	Variable Flat-sedge	212				
<i>Ehrharta calycina</i>	Perennial Veldt-grass	212				
<i>Foeniculum vulgare</i>	Fennel	212	✓			
<i>Fumaria bastardii</i>	Bastard's Fumitory	212				
<i>Fumaria capreolata</i>	White Fumitory	212				
<i>Fumaria densiflora</i>	Dense-flower Fumitory	212				
<i>Fumaria muralis</i>	Wall Fumitory	212				
<i>Fumaria officinalis</i>	Common Fumitory	212				
<i>Galium aparine</i>	Cleavers	212				
<i>Geranium dissectum</i>	Cut-leaf Crane's-bill	212				
<i>Geranium molle</i>	Dove's Foot	212				
<i>Juncus oxycarpus</i>	Spiny-fruit Rush	212				
<i>Leucanthemum vulgare</i>	Ox-eye Daisy	212	✓			
<i>Lolium perenne</i>	Perennial Rye-grass	212				
<i>Medicago arabica</i>	Spotted Medic	212				

Appendix 1 Environmental weeds of the Ranges bioregions of Victoria listed alphabetically within risk categories

Botanical Name	Common Name	Ranking Score	CALP Act	Vic Alert Weed	National Alert Weed	WONS
<i>Phleum pratense</i>	Timothy Grass	212				
<i>Poa pratensis</i>	Kentucky Blue-grass	212				
<i>Setaria viridis</i>	Green Pigeon-grass	212				
<i>Tagetes minuta</i>	Stinking Roger	212				
<i>Tribolium acutiflorum</i>	Desmazeria	212				
<i>Tribolium oblitterum</i>	Desmazeria	212				
<i>Aeonium haworthii</i>	Pinwheel Aeonium	213				
<i>Arrhenatherum elatius</i>	False Oat-grass	213				
<i>Chamaecytisus palmensis</i>	Tree Lucerne	213				
<i>Eucalyptus botryoides</i>	Southern Mahogany	213				
<i>Galenia pubescens</i>	Galenia	213				
<i>Kennedia rubicunda</i>	Dusky Coral-pea	213				
<i>Melaleuca armillaris</i>	Giant Honey-myrtle	213				
<i>Melaleuca hypericifolia</i>	Hillock Bush	213				
<i>Mentha pulegium</i>	Pennyroyal	213				
<i>Mentha spicata</i>	Spearmint	213				
<i>Salpichroa origanifolia</i>	Pampas Lily-of-the-Valley	213	✓			✓
<i>Silybum maritimum</i>	Variegated Thistle	213	✓			
<i>Avena barbata</i>	Bearded Oat	214				
<i>Avena fatua</i>	Wild Oat	214				
<i>Echium plantagineum</i>	Paterson's Curse	214	✓			
<i>Helminthotheca echioides</i>	Ox-tongue	214				
<i>Paspalum dilatatum</i>	Paspalum	214				
<i>Atriplex prostrata</i>	Hastate Orache	215				
<i>Raphanus raphanistrum</i>	Wild Radish	215				
<i>Babiana angustifolia</i>	Baboon Flower	216				
<i>Grevillea robusta</i>	Silky Oak	216				
<i>Hakea drupacea</i>	Sweet Hakea	216				
<i>Hakea laurina</i>	Pincushion Hakea	216				
<i>Malus pumila</i>	Apple	216				
<i>Trifolium subterraneum</i>	Subterranean Clover	216				
<i>Silene vulgaris</i>	Bladder Champion	227				
<i>Torilis arvensis</i>	Spreading Hedge-parsley	227				
<i>Polygonum arenastrum</i>	Wireweed	228				
<i>Sanguisorba minor</i>	Salad Burnet	228				
<i>Scleranthus annuus</i>	Annual Knawel	229				
<i>Bellis perennis</i>	English Daisy	230				
<i>Lotus angustissimus</i>	Slender Bird's-foot Trefoil	230				
<i>Setaria pumila</i>	Pale Pigeon-grass	230				
<i>Silene gallica</i>	French Catchfly	230				
<i>Vicia hirsuta</i>	Tiny Vetch	230				
<i>Vicia tetrasperma</i>	Slender Vetch	230				
<i>Acacia podalyriifolia</i>	Queensland Silver Wattle	231				
<i>Chamaemelum nobile</i>	Common Chamomile	231				
<i>Lychnis coronaria</i>	Rose Champion	231				
<i>Arctotheca calendula</i>	Cape Weed	232				
<i>Poa annua</i>	Annual Meadow-grass	232				
<i>Brassica fruticulosa</i>	Twiggy Turnip	233				
<i>Brassica nigra</i>	Black Mustard	233				
<i>Brassica rapa</i>	White Turnip	233				
<i>Brassica tournefortii</i>	Mediterranean Turnip	233				
<i>Polypogon monspeliensis</i>	Annual Beard-grass	233				
<i>Polypogon viridis</i>	Water Bent	233				
<i>Arenaria serpyllifolia</i>	Thyme-leaved Sandwort	235				
<i>Urospermum picroides</i>	False Hawkbit	235				
<i>Arctotheca prostrata</i>	Creeping Bear's-ear	236				

Appendix 1 Environmental weeds of the Ranges bioregions of Victoria listed alphabetically within risk categories

Botanical Name	Common Name	Ranking Score	CALP Act	Vic Alert Weed	National Alert Weed	WONS
<i>Arenaria leptoclados</i>	Lesser Thyme-leaved Sandwort	236				
<i>Bartsia trixago</i>	Bellardia	236				
<i>Centranthus ruber</i>	Red Valerian	236				
<i>Ciclospermum leptophyllum</i>	Slender Celery	236				
<i>Danthonia decumbens</i>	Heath Grass	236				
<i>Festuca rubra</i>	Red Fescue	236				
<i>Galinsoga parviflora</i>	Gallant Soldier	236				
<i>Lythrum junceum</i>	Mediterranean Loosestrife	236				
<i>Melilotus albus</i>	Bokhara Clover	236				
<i>Melilotus indicus</i>	Sweet Melilot	236				
<i>Ornithopus pinnatus</i>	Sand Bird's-foot	236				
<i>Passiflora edulis</i>	Black Passion-fruit	236				
<i>Plantago myosurus</i>	Mouse Plantain	236				
<i>Polygonum bellardii</i>	Tree Hogweed	236				
<i>Prunella laciniata</i>	Cut-leaf Self-heal	236				
<i>Rosa canina</i>	Dog Rose	236				
<i>Tanacetum parthenium</i>	Feverfew	236				
<i>Torilis nodosa</i>	Knotted Hedge-parsley	236				
<i>Vicia disperma</i>	French Tiny Vetch	236				
<i>Acacia cognata</i>	Narrow-leaf Bower-wattle	237				
<i>Aloe maculata</i>	Common Soap Aloe	237				
<i>Aquilegia vulgaris</i>	Columbine	237				
<i>Asterolinon linum-stellatum</i>	Asterolinon	237				
<i>Crassula ericoides</i>	Reptile Crassula	237				
<i>Hyacinthoides hispanica</i>	Spanish Bluebell	237				
<i>Hyacinthoides non-scripta</i>	English Bluebell	237				
<i>Impatiens balfourii</i>	Poor Man's Orchid	237				
<i>Lilium formosanum</i>	Taiwan Lily	237				
<i>Lunaria annua</i>	Honesty	237				
<i>Paraserianthes lophantha</i>	Cape Wattle	237				
<i>Paronychia brasiliensis</i>	Whitlow Wort	237				
<i>Paronychia franciscana</i>	Chile Nailwort	237				
<i>Passiflora cinnabarina</i>	Red Passion-flower	237				
<i>Polygala vulgaris</i>	Common Milkwort	237				
<i>Ranunculus flammula</i>	Lesser Spearwort	237				
<i>Ricinus communis</i>	Castor Oil Plant	237				
<i>Vaccaria hispanica</i>	Cow Soapwort	237				
<i>Viola riviniana</i>	Common Dog-violet	237				
<i>Bromus lanceolatus</i>	Mediterranean Brome	238				
<i>Bromus tectorum</i>	Wall Brome	238				
<i>Cardamine flexuosa</i>	Wood Bitter-cress	238				
<i>Echium vulgare</i>	Viper's Bugloss	238	✓			
<i>Physalis peruviana</i>	Cape Gooseberry	238				
<i>Physalis viscosa</i>	Sticky Ground-cherry	238	✓			
<i>Solanum marginatum</i>	White-edge Nightshade	238				
<i>Soliva sessilis</i>	Jo Jo	238				
<i>Soliva stolonifera</i>	Carpet Burrweed	238				
<i>Acetosa sagittata</i>	Rambling Dock	239				
<i>Amsinckia calycina</i>	Hairy Fiddle-neck	239	✓			
<i>Amsinckia intermedia</i>	Common Fiddle-neck	239	✓			
<i>Amsinckia lycopsoides</i>	Bugloss Fiddle-neck	239	✓			
<i>Barbarea verna</i>	Early Wintercress	239				
<i>Eleusine tristachya</i>	American Crows-foot Grass	239				
<i>Eragrostis ciliaris</i>	Stink Grass	239				
<i>Eragrostis curvula</i>	African Love-grass	239	✓			
<i>Gastridium phleoides</i>	Nit-grass	239				

Appendix 1 Environmental weeds of the Ranges bioregions of Victoria listed alphabetically within risk categories

Botanical Name	Common Name	Ranking Score	CALP Act	Vic Alert Weed	National Alert Weed	WONS
<i>Hainardia cylindrica</i>	Common Barb-grass	239				
<i>Linum trigynum</i>	French Flax	239				
<i>Linum usitatissimum</i>	Flax	239				
<i>Logfia gallica</i>	French Cudweed	239				
<i>Matricaria matricarioides</i>	Rounded Chamomile	239				
<i>Myosotis arvensis</i>	Field Forget-me-not	239				
<i>Oenothera glazioviana</i>	Reddish Evening-primrose	239				
<i>Oenothera rosea</i>	Rose Evening-primrose	239				
<i>Papaver dubium</i>	Long-headed Poppy	239				
<i>Papaver somniferum</i>	Opium Poppy	239				
<i>Polygonum aviculare</i>	Prostrate Knotweed	239				
<i>Reseda luteola</i>	Weld	239				
<i>Setaria italica</i>	Italian Millet	239				
<i>Silene nocturna</i>	Mediterranean Catchfly	239				
<i>Spergularia bocconii</i>	Bocconi's Sand-spurrey	239				
<i>Trifolium ornithopodioides</i>	Birdsfoot Clover	239				
<i>Trifolium pratense</i>	Red Clover	239				
<i>Trifolium striatum</i>	Knotted Clover	239				
<i>Trifolium tomentosum</i>	Woolly Clover	239				
<i>Valerianella eriocarpa</i>	Italian Corn-salad	239				
<i>Valerianella locusta</i>	Corn Salad	239				
<i>Verbascum blattaria</i>	Moth Mullein	239				
<i>Verbascum creticum</i>	Cretan Mullein	239				
<i>Veronica hederifolia</i>	Ivy-leaf Speedwell	239				
<i>Veronica peregrina</i>	Wandering Speedwell	239				
<i>Acacia retinodes</i>	Wirilda	240				
<i>Acacia rupicola</i>	Rock Wattle	240				
<i>Aster lanceolatus</i>	Michaelmas Daisy	240				
<i>Aster novi-belgii</i>	Michaelmas Daisy	240				
<i>Corymbia maculata</i>	Spotted Gum	240				
<i>Datura ferox</i>	Long-spine Thorn-apple	240	✓			
<i>Euphorbia lathyris</i>	Caper Spurge	240				
<i>Lupinus polyphyllus</i>	Russell Lupin	240				
<i>Malva neglecta</i>	Dwarf Mallow	240				
<i>Malva nicaeensis</i>	Mallow of Nice	240				
<i>Malva parviflora</i>	Small-flower Mallow	240				
<i>Melianthus comosus</i>	Tufted Honey-flower	240	✓			
<i>Melianthus major</i>	Cape Honey-flower	240				
<i>Moraea fugacissima</i>	Galaxia	240				
<i>Myagrum perfoliatum</i>	Musk Weed	240				
<i>Viola odorata</i>	Common Violet	240				
<i>Capsella bursa-pastoris</i>	Shepherd's Purse	241				
<i>Centaurium maritimum</i>	Sea Centaury	241				
<i>Chenopodium album</i>	Fat Hen	241				
<i>Chenopodium murale</i>	Sowbane	241				
<i>Chenopodium vulvaria</i>	Stinking Goosefoot	241				
<i>Dittrichia graveolens</i>	Stinkwort	241	✓			
<i>Hordeum glaucum</i>	Northern Barley-grass	241				
<i>Lactuca saligna</i>	Willow-leaf Lettuce	241				
<i>Lactuca serriola</i>	Prickly Lettuce	241				
<i>Lagurus ovatus</i>	Hare's-tail Grass	241				
<i>Leontodon taraxacoides</i>	Hairy Hawkbit	241				
<i>Molineriella minuta</i>	Small Hair-grass	241				
<i>Parapholis incurva</i>	Coast Barb-grass	241				
<i>Parapholis strigosa</i>	Slender Barb-grass	241				
<i>Poa bulbosa</i>	Bulbous Meadow-grass	241				

Appendix 1 Environmental weeds of the Ranges bioregions of Victoria listed alphabetically within risk categories

Botanical Name	Common Name	Ranking Score	CALP Act	Vic Alert Weed	National Alert Weed	WONS
<i>Salvia verbenaca</i>	Wild Sage	241				
<i>Schismus barbatus</i>	Arabian Grass	241				
<i>Senecio vulgaris</i>	Common Groundsel	241				
<i>Urtica urens</i>	Small Nettle	241				
<i>Veronica arvensis</i>	Wall Speedwell	241				
<i>Atriplex suberecta</i>	Sprawling Saltbush	242				
<i>Cucumis myriocarpus</i>	Paddy Melon	242				
<i>Daucus carota</i>	Carrot	242				
<i>Dipsacus fullonum</i>	Wild Teasel	242	✓			
<i>Echinochloa crus-galli</i>	Barnyard Grass	242				
<i>Echinochloa muricata</i>	Prickly Barnyard-grass	242				
<i>Kickxia elatine</i>	Hairy Toadflax	242				
<i>Kickxia spuria</i>	Round-leaved Toadflax	242				
<i>Lepidium africanum</i>	Common Peppergrass	242				
<i>Lepidium bonariense</i>	Argentine Cress	242				
<i>Linaria arvensis</i>	Corn Toad-flax	242				
<i>Lolium rigidum</i>	Wimmera Rye-grass	242				
<i>Medicago minima</i>	Little Medic	242				
<i>Medicago polymorpha</i>	Burr Medic	242				
<i>Modiola caroliniana</i>	Red-flower Mallow	242				
<i>Nicotiana glauca</i>	Tree Tobacco	242				
<i>Plantago coronopus</i>	Buck's-horn Plantain	242				
<i>Romulea minutiflora</i>	Small-flower Onion-grass	242				
<i>Romulea rosea</i>	Onion Grass	242				
<i>Scorzonera laciniata</i>	Scorzonera	242				
<i>Sisymbrium orientale</i>	Indian Hedge-mustard	242				
<i>Spergularia media</i>	Greater Sea-spurrey	242				
<i>Tragopogon porrifolius</i>	Salsify	242				
<i>Tribulus terrestris</i>	Caltrop	242				
<i>Trifolium cernuum</i>	Drooping-flower Clover	242				
<i>Xanthium spinosum</i>	Bathurst Burr	242	✓			
<i>Acacia saligna</i>	Golden Wreath Wattle	243				
<i>Chlorophytum comosum</i>	Spider Plant	243				
<i>Conringia orientalis</i>	Treacle Mustard	243				
<i>Dianthus barbatus</i>	Sweet William	243				

Appendix 2

Environmental weeds of the Ranges bioregions of Victoria listed by botanical name

Botanical Name	Common Name	Ranking Score	CALP Act	Vic Alert Weed	National Alert Weed	WONS
<i>Acacia baileyana</i>	Cootamundra Wattle	39				
<i>Acacia cognata</i>	Narrow-leaf Bower-wattle	237				
<i>Acacia decurrens</i>	Early Black-wattle	42				
<i>Acacia elata</i>	Cedar Wattle	39				
<i>Acacia fimbriata</i>	Fringed Wattle	174				
<i>Acacia floribunda</i>	White Sallow-wattle	93				
<i>Acacia howittii</i>	Sticky Wattle	84				
<i>Acacia longifolia</i> subsp. <i>sophorae</i>	Coast Wattle	131				
<i>Acacia obtusifolia</i>	Blunt-leaf Wattle	120				
<i>Acacia podalyriifolia</i>	Queensland Silver Wattle	231				
<i>Acacia pravissima</i>	Ovens Wattle	93				
<i>Acacia retinodes</i>	Wirilda	240				
<i>Acacia rupicola</i>	Rock Wattle	240				
<i>Acacia saligna</i>	Golden Wreath Wattle	243				
<i>Acacia schinoides</i>	Frosty Wattle	210				
<i>Acanthus mollis</i>	Bear's Breach	156				
<i>Acer negundo</i>	Box-elder Maple	1				
<i>Acer palmatum</i>	Japanese Maple	154				
<i>Acer pseudoplatanus</i>	Sycamore Maple	11				
<i>Acetosa sagittata</i>	Rambling Dock	239				
<i>Acetosella vulgaris</i>	Sheep Sorrel	43				
<i>Achillea distans</i>	Tansyleaf Milfoil	102				
<i>Achillea millefolium</i>	Milfoil	101				
<i>Aeonium haworthii</i>	Pinwheel Aeonium	213				
<i>Agapanthus praecox</i>	Agapanthus	147				
<i>Ageratina ligustrina</i>	Ageratina	37				
<i>Agrostis capillaris</i>	Brown-top Bent	94				
<i>Agrostis castellana</i>	Highland Bent	94				
<i>Agrostis gigantea</i>	Red-top Bent	100				
<i>Agrostis stolonifera</i>	Creeping Bent	40				
<i>Ailanthus altissima</i>	Tree of Heaven	102	✓			
<i>Aira caryophyllea</i>	Silvery Hair-grass	124				
<i>Aira cupaniana</i>	Quicksilver Grass	124				
<i>Aira elegantissima</i>	Delicate Hair-grass	124				
<i>Aira praecox</i>	Early Hair-grass	124				
<i>Allium triquetrum</i>	Angled Onion	12	✓			
<i>Aloe maculata</i>	Common Soap Aloe	237				
<i>Alopecurus aequalis</i>	Orange Fox-tail	185				
<i>Alopecurus geniculatus</i>	Marsh Fox-tail	185				
<i>Alstroemeria aurea</i>	Yellow Alstroemeria	93				
<i>Alstroemeria psittacina</i>	Peruvian Parrot-lily	93				
<i>Ammi majus</i>	Bishop's Weed	209				
<i>Amsinckia calycina</i>	Hairy Fiddle-neck	239	✓			
<i>Amsinckia intermedia</i>	Common Fiddle-neck	239	✓			
<i>Amsinckia lycopsoides</i>	Bugloss Fiddle-neck	239	✓			
<i>Anagallis arvensis</i>	Pimpernel	133				
<i>Anagallis minima</i>	Chaffweed	130				
<i>Anchusa arvensis</i>	Bugloss	185				
<i>Anchusa capensis</i>	Cape Forget-me-not	200				
<i>Anredera cordifolia</i>	Madeira Vine	201				
<i>Anthemis cotula</i>	Stinking Mayweed	173				
<i>Anthoxanthum odoratum</i>	Sweet Vernal-grass	31				
<i>Aphanes arvensis</i>	Parsley Piert	124				
<i>Aphanes microcarpa</i>	Small Piert	124				
<i>Aptenia cordifolia</i>	Heart-leaf Ice-plant	102				
<i>Aquilegia vulgaris</i>	Columbine	237				

Appendix 2 Environmental weeds of the Ranges bioregions of Victoria listed by botanical name

Botanical Name	Common Name	Ranking Score	CALP Act	Vic Alert Weed	National Alert Weed	WONS
<i>Araujia sericifera</i>	White Bladder-flower	209				
<i>Arbutus unedo</i>	Irish Strawberry Tree	65				
<i>Arctotheca calendula</i>	Cape Weed	232				
<i>Arctotheca prostrata</i>	Creeping Bear's-ear	236				
<i>Arctotis stoechadifolia</i>	White Arctotis	210				
<i>Arenaria leptoclados</i>	Lesser Thyme-leaved Sandwort	236				
<i>Arenaria serpyllifolia</i>	Thyme-leaved Sandwort	235				
<i>Argemone ochroleuca</i>	Sweet Mexican Poppy	182				
<i>Arisarum vulgare</i>	Common Arisarum	93				
<i>Aristea ecklonii</i>	Blue Stars	183				
<i>Arrhenatherum elatius</i>	False Oat-grass	213				
<i>Artemisia verlotiorum</i>	Chinese Wormwood	46				
<i>Asparagus asparagoides</i>	Bridal Creeper	10	✓			✓
<i>Asparagus scandens</i>	Asparagus Fern	19				
<i>Aster lanceolatus</i>	Michaelmas Daisy	240				
<i>Aster novi-belgii</i>	Michaelmas Daisy	240				
<i>Aster subulatus</i>	Aster-weed	52				
<i>Asterolinon linum-stellatum</i>	Asterolinon	237				
<i>Atriplex prostrata</i>	Hastate Orache	215				
<i>Atriplex suberecta</i>	Sprawling Saltbush	242				
<i>Avellinia michelii</i>	Avellinia	124				
<i>Avena barbata</i>	Bearded Oat	214				
<i>Avena fatua</i>	Wild Oat	214				
<i>Axonopus fissifolius</i>	Carpet Grass	209				
<i>Babiana angustifolia</i>	Baboon Flower	216				
<i>Ballota nigra</i>	Black Horehound	101				
<i>Barbarea verna</i>	Early Wintercress	239				
<i>Bartsia trixago</i>	Bellardia	236				
<i>Bellis perennis</i>	English Daisy	230				
<i>Berberis darwinii</i>	Darwin's Barberry	39				
<i>Betula aff. pubescens</i>	Birch	155				
<i>Brassica fruticulosa</i>	Twiggy Turnip	233				
<i>Brassica nigra</i>	Black Mustard	233				
<i>Brassica rapa</i>	White Turnip	233				
<i>Brassica tournefortii</i>	Mediterranean Turnip	233				
<i>Briza maxima</i>	Large Quaking-grass	44				
<i>Briza minor</i>	Lesser Quaking-grass	125				
<i>Bromus catharticus</i>	Prairie Grass	103				
<i>Bromus diandrus</i>	Great Brome	106				
<i>Bromus hordeaceus</i>	Soft Brome	97				
<i>Bromus lanceolatus</i>	Mediterranean Brome	238				
<i>Bromus madritensis</i>	Madrid Brome	97				
<i>Bromus rubens</i>	Red Brome	106				
<i>Bromus tectorum</i>	Wall Brome	238				
<i>Buddleja davidii</i>	Butterfly Bush	102				
<i>Buddleja globosa</i>	Golden Honey-balls	102				
<i>Calicotome spinosa</i>	Spiny Broom	204	✓			
<i>Callitris endlicheri</i>	Black Cypress-pine	24				
<i>Callitris oblonga</i>	Dwarf Cypress-pine	162				
<i>Callitris rhomboidea</i>	Oyster Bay Pine	105				
<i>Calystegia silvatica</i>	Greater Bindweed	162				
<i>Capsella bursa-pastoris</i>	Shepherd's Purse	241				
<i>Cardamine flexuosa</i>	Wood Bitter-cress	238				
<i>Cardamine hirsuta</i>	Common Bitter-cress	178				
<i>Carduus pycnocephalus</i>	Slender Thistle	97	✓			
<i>Carduus tenuiflorus</i>	Winged Slender-thistle	97	✓			

Appendix 2 Environmental weeds of the Ranges bioregions of Victoria listed by botanical name

Botanical Name	Common Name	Ranking Score	CALP Act	Vic Alert Weed	National Alert Weed	WONS
<i>Carex divisa</i>	Divided Sedge	20				
<i>Carex punctata</i>	Dotted Sedge	101				
<i>Carthamus lanatus</i>	Saffron Thistle	106	✓			
<i>Catapodium rigidum</i>	Fern Grass	184				
<i>Centaurea calcitrapa</i>	Star Thistle	103	✓			
<i>Centaurea melitensis</i>	Malta Thistle	184				
<i>Centaurea nigra</i>	Black Knapweed	208	✓	✓		
<i>Centaurea solstitialis</i>	St Barnaby's Thistle	208	✓			
<i>Centaurium erythraea</i>	Common Centaury	115				
<i>Centaurium maritimum</i>	Sea Centaury	241				
<i>Centaurium tenuiflorum</i>	Slender Centaury	115				
<i>Centranthus ruber</i>	Red Valerian	236				
<i>Cerastium balearicum</i>	Balearic Mouse-ear Chickweed	172				
<i>Cerastium comatum</i>	Levantine Mouse-ear Chickweed	172				
<i>Cerastium diffusum</i>	Sea Mouse-ear Chickweed	172				
<i>Cerastium fontanum</i>	Common Mouse-ear Chickweed	175				
<i>Cerastium glomeratum</i>	Common Mouse-ear Chickweed	178				
<i>Cerastium pumilum</i>	Curtis's Mouse-ear Chickweed	178				
<i>Cerastium semidecandrum</i>	Mouse-ear Chickweed	178				
<i>Cestrum elegans</i>	Elegant Poison-berry	92				
<i>Cestrum parqui</i>	Green Poison-berry	92				
<i>Chamaecytisus palmensis</i>	Tree Lucerne	213				
<i>Chamaemelum nobile</i>	Common Chamomile	231				
<i>Chasmanthe floribunda</i>	African Cornflag	66				
<i>Chenopodium album</i>	Fat Hen	241				
<i>Chenopodium murale</i>	Sowbane	241				
<i>Chenopodium vulvaria</i>	Stinking Goosefoot	241				
<i>Chlorophytum comosum</i>	Spider Plant	243				
<i>Chrysanthemoides monilifera</i>	Boneseed	13	✓			✓
<i>Cicendia filiformis</i>	Slender Cicendia	133				
<i>Cicendia quadrangularis</i>	Square Cicendia	133				
<i>Ciclospermum leptophyllum</i>	Slender Celery	236				
<i>Cirsium vulgare</i>	Spear Thistle	115	✓			
<i>Claytonia perfoliata</i>	Miner's Lettuce	210				
<i>Clematis vitalba</i>	Traveller's Joy	11		✓		
<i>Conium maculatum</i>	Hemlock	104	✓			
<i>Conringia orientalis</i>	Treacle Mustard	243				
<i>Conyza bilbaoana</i>	Smooth Fleabane	115				
<i>Conyza bonariensis</i>	Flaxleaf Fleabane	115				
<i>Conyza canadensis</i>	Canadian Fleabane	115				
<i>Conyza primulaefolia</i>	Rough Conyza	115				
<i>Conyza sumatrensis</i>	Tall Fleabane	109				
<i>Coprosma repens</i>	Mirror Bush	73				
<i>Coprosma robusta</i>	Karamu	10				
<i>Cordyline australis</i>	New Zealand Cabbage-tree	100				
<i>Coreopsis lanceolata</i>	Common Tickseed	47				
<i>Cornus capitata</i>	Himalayan Strawberry-tree	210				
<i>Cortaderia jubata</i>	Pink Pampas-grass	73				
<i>Cortaderia selloana</i>	Pampas Grass	73				
<i>Corymbia maculata</i>	Spotted Gum	240				
<i>Cotoneaster divaricatus</i>	Spreading Cotoneaster	10				
<i>Cotoneaster franchetii</i>	Grey Cotoneaster	10				
<i>Cotoneaster glaucophyllus</i>	Large-leaf Cotoneaster	10				
<i>Cotoneaster horizontalis</i>	Fishbone Cotoneaster	211				
<i>Cotoneaster pannosus</i>	Velvet Cotoneaster	10				
<i>Cotoneaster simonsii</i>	Himalayan Cotoneaster	10				

Appendix 2 Environmental weeds of the Ranges bioregions of Victoria listed by botanical name

Botanical Name	Common Name	Ranking Score	CALP Act	Vic Alert Weed	National Alert Weed	WONS
<i>Cotula bipinnata</i>	Ferny Cotula	124				
<i>Cotyledon orbiculata</i>	Pig's Ear	210				
<i>Crassula alata</i>	Three-part Crassula	130				
<i>Crassula ericoides</i>	Reptile Crassula	237				
<i>Crassula multicava</i>	Shade Crassula	102				
<i>Crassula tetragona</i>	Shrubby Crassula	102				
<i>Crataegus monogyna</i>	Hawthorn	13				
<i>Crepis capillaris</i>	Smooth Hawksbeard	175				
<i>Crepis setosa</i>	Bristly Hawksbeard	118				
<i>Crocosmia X crocosmiiflora</i>	Montbretia	3				
<i>Cucumis myriocarpus</i>	Paddy Melon	242				
<i>Cupressus macrocarpa</i>	Monterey Cypress	207				
<i>Cynodon dactylon</i>	Couch	186				
<i>Cynosurus cristatus</i>	Crested Dog's-tail	175				
<i>Cynosurus echinatus</i>	Rough Dog's-tail	98				
<i>Cyperus brevifolius</i>	Mullumbimby Couch	128				
<i>Cyperus congestus</i>	Dense Flat-sedge	212				
<i>Cyperus difformis</i>	Variable Flat-sedge	212				
<i>Cyperus eragrostis</i>	Drain Flat-sedge	53				
<i>Cytisus multiflorus</i>	White Spanish Broom	203			✓	
<i>Cytisus scoparius</i>	English Broom	3	✓			
<i>Dactylis glomerata</i>	Cocksfoot	97				
<i>Danthonia decumbens</i>	Heath Grass	236				
<i>Datura ferox</i>	Long-spine Thorn-apple	240	✓			
<i>Datura stramonium</i>	Common Thorn-apple	186	✓			
<i>Daucus carota</i>	Carrot	242				
<i>Delairea odorata</i>	Cape Ivy	77				
<i>Dianthus armeria</i>	Deptford Pink	174				
<i>Dianthus barbatus</i>	Sweet William	243				
<i>Digitalis purpurea</i>	Foxglove	186				
<i>Dipogon lignosus</i>	Common Dipogon	156				
<i>Dipsacus fullonum</i>	Wild Teasel	242	✓			
<i>Disa bracteata</i>	South African Orchid	103				
<i>Dittrichia graveolens</i>	Stinkwort	241	✓			
<i>Echinochloa crus-galli</i>	Barnyard Grass	242				
<i>Echinochloa muricata</i>	Prickly Barnyard-grass	242				
<i>Echium plantagineum</i>	Paterson's Curse	214	✓			
<i>Echium vulgare</i>	Viper's Bugloss	238	✓			
<i>Ehrharta calycina</i>	Perennial Veldt-grass	212				
<i>Ehrharta erecta</i>	Panic Veldt-grass	40				
<i>Ehrharta longiflora</i>	Annual Veldt-grass	40				
<i>Eleusine tristachya</i>	American Crows-foot Grass	239				
<i>Epilobium ciliatum</i>	Glandular Willow-herb	175				
<i>Epilobium hirsutum</i>	Great Willow-herb	175		✓		
<i>Equisetum spp.</i>	Horsetail	12	✓	✓	✓	
<i>Eragrostis cilianensis</i>	Stink Grass	239				
<i>Eragrostis curvula</i>	African Love-grass	239	✓			
<i>Erica arborea</i>	Tree Heath	93				
<i>Erica baccans</i>	Berry-flower Heath	102				
<i>Erica lusitanica</i>	Spanish Heath	11				
<i>Erica quadrangularis</i>	Angled Heath	102				
<i>Erigeron karvinskianus</i>	Seaside Daisy	210				
<i>Erodium botrys</i>	Big Heron's-bill	106				
<i>Erodium cicutarium</i>	Common Heron's-bill	106				
<i>Erodium moschatum</i>	Musky Heron's-bill	211				
<i>Erophila verna</i>	Whitlow Grass	203				

Appendix 2 Environmental weeds of the Ranges bioregions of Victoria listed by botanical name

Botanical Name	Common Name	Ranking Score	CALP Act	Vic Alert Weed	National Alert Weed	WONS
<i>Eschscholzia californica</i>	Californian Poppy	104				
<i>Eucalyptus botryoides</i>	Southern Mahogany	213				
<i>Euphorbia lathyris</i>	Caper Spurge	240				
<i>Euphorbia peplus</i>	Petty Spurge	178				
<i>Euryops abrotanifolius</i>	Winter Euryops	39				
<i>Fallopia convolvulus</i>	Black Bindweed	100				
<i>Fallopia japonica</i>	Japanese Knotweed	10	✓	✓		
<i>Fallopia sachalinensis</i>	Giant Knotweed	10	✓	✓		
<i>Festuca arundinacea</i>	Tall Fescue	104				
<i>Festuca rubra</i>	Red Fescue	236				
<i>Ficus carica</i>	Fig	208				
<i>Foeniculum vulgare</i>	Fennel	212	✓			
<i>Fraxinus angustifolia</i>	Desert Ash	11				
<i>Fraxinus ornus</i>	Flowering Ash	156				
<i>Freesia alba x Freesia leichtlinii</i>	Freesia	102				
<i>Fuchsia magellanica</i>	Fuchsia	19				
<i>Fumaria bastardii</i>	Bastard's Fumitory	212				
<i>Fumaria capreolata</i>	White Fumitory	212				
<i>Fumaria densiflora</i>	Dense-flower Fumitory	212				
<i>Fumaria muralis</i>	Wall Fumitory	212				
<i>Fumaria officinalis</i>	Common Fumitory	212				
<i>Galenia pubescens</i>	Galenia	213				
<i>Gallinsoga parviflora</i>	Gallant Soldier	236				
<i>Galium aparine</i>	Cleavers	212				
<i>Galium divaricatum</i>	Slender Bedstraw	122				
<i>Galium murale</i>	Small Goosegrass	133				
<i>Gamochaeta calviceps</i>	Silky Cudweed	175				
<i>Gamochaeta pensylvanica</i>	Woolly Cudweed	172				
<i>Gamochaeta purpurea</i>	Purple Cudweed	178				
<i>Gastridium phleoides</i>	Nit-grass	239				
<i>Genista linifolia</i>	Flax-leaf Broom	12	✓			
<i>Genista monspessulana</i>	Montpellier Broom	11	✓			
<i>Geranium dissectum</i>	Cut-leaf Crane's-bill	212				
<i>Geranium molle</i>	Dove's Foot	212				
<i>Gladiolus communis</i>	Byzantine Gladiolus	210				
<i>Gladiolus tristis</i>	Evening-flower Gladiolus	102				
<i>Gladiolus undulatus</i>	Wild Gladiolus	48				
<i>Glyceria declinata</i>	Manna Grass	20				
<i>Glyceria maxima</i>	Reed Sweet-grass	20				
<i>Glyceria notata</i>	Floating Sweet-grass	20				
<i>Gomphocarpus cancellatus</i>	Broad-leaf Cotton-bush	129				
<i>Gomphocarpus fruticosus</i>	Swan Plant	129				
<i>Grevillea robusta</i>	Silky Oak	216				
<i>Gypsophila tubulosa</i>	Chalkwort	130				
<i>Hainardia cylindrica</i>	Common Barb-grass	239				
<i>Hakea drupacea</i>	Sweet Hakea	216				
<i>Hakea laurina</i>	Pincushion Hakea	216				
<i>Hakea salicifolia</i>	Willow-leaf Hakea	201				
<i>Hedera helix</i>	English Ivy	1				
<i>Helminthotheca echioides</i>	Ox-tongue	214				
<i>Hieracium aurantiacum</i>	Orange Hawkweed	19	✓	✓	✓	
<i>Hirschfeldia incana</i>	Buchan Weed	104				
<i>Holcus lanatus</i>	Yorkshire Fog	52				
<i>Hordeum glaucum</i>	Northern Barley-grass	241				
<i>Hordeum hystrix</i>	Mediterranean Barley-grass	178				
<i>Hordeum leporinum</i>	Barley-grass	178				

Appendix 2 Environmental weeds of the Ranges bioregions of Victoria listed by botanical name

Botanical Name	Common Name	Ranking Score	CALP Act	Vic Alert Weed	National Alert Weed	WONS
<i>Hordeum marinum</i>	Sea Barley-grass	178				
<i>Hordeum murinum</i>	Barley-grass	178				
<i>Hordeum vulgare</i>	Barley	178				
<i>Hyacinthoides hispanica</i>	Spanish Bluebell	237				
<i>Hyacinthoides non-scripta</i>	English Bluebell	237				
<i>Hypericum androsaemum</i>	Tutsan	118	✓			
<i>Hypericum calycinum</i>	Aaron's Beard	200				
<i>Hypericum humifusum</i>	Trailing St John's Wort	200				
<i>Hypericum perforatum</i>	St John's Wort	43	✓			
<i>Hypericum tetrapterum</i>	St Peter's Wort	53	✓			
<i>Hypochoeris glabra</i>	Smooth Cat's-ear	133				
<i>Hypochoeris radicata</i>	Flatweed	115				
<i>Ilex aquifolium</i>	English Holly	10				
<i>Impatiens balfouri</i>	Poor Man's Orchid	237				
<i>Ipomoea indica</i>	Blue Morning-glory	201				
<i>Iris foetidissima</i>	Stinking Iris	211				
<i>Isolepis hystrix</i>	Awnead Club-sedge	187				
<i>Isolepis prolifera</i>	Proliferous Club-sedge	101				
<i>Ixia maculata</i>	Yellow Ixia	210				
<i>Ixia polystachya</i>	Variable Ixia	210				
<i>Juncus acuminatus</i>	Sharp-fruited Rush	100				
<i>Juncus acutus</i>	Spiny Rush	52				
<i>Juncus articulatus</i>	Jointed Rush	52				
<i>Juncus bulbosus</i>	Bulbous Rush	130				
<i>Juncus capitatus</i>	Capitate Rush	133				
<i>Juncus effusus</i>	Soft Rush	46				
<i>Juncus inflexus</i>	Hard Rush	209				
<i>Juncus microcephalus</i>	Tiny-headed Rush	211				
<i>Juncus oxycarpus</i>	Spiny-fruit Rush	212				
<i>Juncus tenuis</i>	Slender Rush	50				
<i>Kennedia rubicunda</i>	Dusky Coral-pea	213				
<i>Kickxia elatine</i>	Hairy Toadflax	242				
<i>Kickxia spuria</i>	Round-leaved Toadflax	242				
<i>Kunzea ambigua</i>	White Kunzea	186				
<i>Kunzea ericoides</i>	Burgan	189				
<i>Lactuca saligna</i>	Willow-leaf Lettuce	241				
<i>Lactuca serriola</i>	Prickly Lettuce	241				
<i>Lagurus ovatus</i>	Hare's-tail Grass	241				
<i>Lamium amplexicaule</i>	Dead Nettle	134				
<i>Lamium galeobdolon</i>	Aluminium Plant	39				
<i>Lampranthus immelmaniae</i>	Lampranthus	102				
<i>Lavandula stoechas</i>	Topped Lavender	201	✓			
<i>Leersia oryzoides</i>	Rice Cut-grass	101				
<i>Leontodon taraxacoides</i>	Hairy Hawkbit	241				
<i>Lepidium africanum</i>	Common Peppergrass	242				
<i>Lepidium bonariense</i>	Argentine Cress	242				
<i>Lepidium didymum</i>	Lesser Swine-cress	185				
<i>Lepidium strictum</i>	Matted Peppergrass	185				
<i>Leptospermum laevigatum</i>	Coast Tea-tree	108				
<i>Leucanthemum maximum</i>	Shasta Daisy	201				
<i>Leucanthemum vulgare</i>	Ox-eye Daisy	212	✓			
<i>Leycesteria formosa</i>	Himalayan Honeysuckle	10				
<i>Ligustrum lucidum</i>	Large-leaf Privet	64				
<i>Ligustrum ovalifolium</i>	Hedge Privet	145				
<i>Ligustrum vulgare</i>	European Privet	145				
<i>Lilium formosanum</i>	Taiwan Lily	237				

Appendix 2 Environmental weeds of the Ranges bioregions of Victoria listed by botanical name

Botanical Name	Common Name	Ranking Score	CALP Act	Vic Alert Weed	National Alert Weed	WONS
<i>Linaria arvensis</i>	Corn Toad-flax	242				
<i>Linum trigynum</i>	French Flax	239				
<i>Linum usitatissimum</i>	Flax	239				
<i>Logfia gallica</i>	French Cudweed	239				
<i>Lolium perenne</i>	Perennial Rye-grass	212				
<i>Lolium rigidum</i>	Wimmera Rye-grass	242				
<i>Lonicera japonica</i>	Japanese Honeysuckle	1				
<i>Lotus angustissimus</i>	Slender Bird's-foot Trefoil	230				
<i>Lotus corniculatus</i>	Bird's-foot Trefoil	176				
<i>Lotus subbiflorus</i>	Hairy Bird's-foot Trefoil	176				
<i>Lotus uliginosus</i>	Greater Bird's-foot Trefoil	176				
<i>Lunaria annua</i>	Honesty	237				
<i>Lupinus arboreus</i>	Tree Lupin	102				
<i>Lupinus polyphyllus</i>	Russell Lupin	240				
<i>Lychnis coronaria</i>	Rose Campion	231				
<i>Lycium barbarum</i>	Chinese Box-thorn	100				
<i>Lycium ferocissimum</i>	African Box-thorn	49	✓			
<i>Lysimachia nummularia</i>	Creeping Jenny	210				
<i>Lythrum junceum</i>	Mediterranean Loosestrife	236				
<i>Mahonia aquifolium</i>	Oregon Grape	39				
<i>Malus pumila</i>	Apple	216				
<i>Malva neglecta</i>	Dwarf Mallow	240				
<i>Malva nicaeensis</i>	Mallow of Nice	240				
<i>Malva parviflora</i>	Small-flower Mallow	240				
<i>Marrubium vulgare</i>	Horehound	103	✓			
<i>Matricaria matricarioides</i>	Rounded Chamomile	239				
<i>Medicago arabica</i>	Spotted Medic	212				
<i>Medicago lupulina</i>	Black Medic	47				
<i>Medicago minima</i>	Little Medic	242				
<i>Medicago polymorpha</i>	Burr Medic	242				
<i>Melaleuca armillaris</i>	Giant Honey-myrtle	213				
<i>Melaleuca hypericifolia</i>	Hillock Bush	213				
<i>Melianthus comosus</i>	Tufted Honey-flower	240	✓			
<i>Melianthus major</i>	Cape Honey-flower	240				
<i>Melilotus albus</i>	Bokhara Clover	236				
<i>Melilotus indicus</i>	Sweet Melilot	236				
<i>Melissa officinalis</i>	Lemon Balm	102				
<i>Mentha pulegium</i>	Pennyroyal	213				
<i>Mentha spicata</i>	Spearmint	213				
<i>Mentha X piperita</i>	Peppermint	102				
<i>Mentha X rotundifolia</i>	Apple Mint	102				
<i>Mimulus moschatus</i>	Musk Monkey-flower	50				
<i>Modiola caroliniana</i>	Red-flower Mallow	242				
<i>Moenchia erecta</i>	Erect Chickweed	124				
<i>Molineriella minuta</i>	Small Hair-grass	241				
<i>Moraea fugacissima</i>	Galaxia	240				
<i>Myagrum perfoliatum</i>	Musk Weed	240				
<i>Myosotis arvensis</i>	Field Forget-me-not	239				
<i>Myosotis discolor</i>	Yellow-and-blue Forget-me-not	176				
<i>Myosotis sylvatica</i>	Wood Forget-me-not	20				
<i>Nassella neesiana</i>	Chilean Needle-grass	94	✓			✓
<i>Nassella trichotoma</i>	Serrated Tussock	94	✓			
<i>Nasturtium microphyllum</i>	Brown Watercress	131				
<i>Nasturtium officinale</i>	Watercress	131				
<i>Navarretia squarrosa</i>	Californian Stinkweed	131				
<i>Nicotiana glauca</i>	Tree Tobacco	242				

Appendix 2 Environmental weeds of the Ranges bioregions of Victoria listed by botanical name

Botanical Name	Common Name	Ranking Score	CALP Act	Vic Alert Weed	National Alert Weed	WONS
<i>Oenothera glazioviana</i>	Reddish Evening-primrose	239				
<i>Oenothera rosea</i>	Rose Evening-primrose	239				
<i>Oenothera stricta</i>	Common Evening-primrose	185				
<i>Olea europaea</i>	Olive	46				
<i>Onopordum acanthium</i>	Scotch Thistle	103	✓			
<i>Opuntia aurantiaca</i>	Tiger Pear	75				
<i>Opuntia ficus-indica</i>	Indian Fig	156				
<i>Opuntia monacantha</i>	Drooping Prickly-pear	156	✓			
<i>Opuntia robusta</i>	Wheel Cactus	156	✓			
<i>Opuntia stricta</i>	Common Prickly-pear	75	✓			
<i>Ornithogalum longibracteatum</i>	Pregnant Onion	210				
<i>Ornithopus pinnatus</i>	Sand Bird's-foot	236				
<i>Oxalis articulata</i>	Sourgrass	93				
<i>Oxalis bowiei</i>	Bowie Wood-sorrel	93				
<i>Oxalis brasiliensis</i>	Brazilian Wood-sorrel	93				
<i>Oxalis debilis</i>	Pink Shamrock	93				
<i>Oxalis incarnata</i>	Pale Wood-sorrel	39				
<i>Oxalis latifolia</i>	Large-leaf Wood-sorrel	93				
<i>Oxalis pes-caprae</i>	Soursob	96	✓			
<i>Oxalis purpurea</i>	Large-flower Wood-sorrel	93				
<i>Papaver dubium</i>	Long-headed Poppy	239				
<i>Papaver somniferum</i>	Opium Poppy	239				
<i>Parapholis incurva</i>	Coast Barb-grass	241				
<i>Parapholis strigosa</i>	Slender Barb-grass	241				
<i>Paraserianthes lophantha</i>	Cape Wattle	237				
<i>Parentucellia latifolia</i>	Red Bartsia	188				
<i>Parentucellia viscosa</i>	Yellow Bartsia	188				
<i>Paronychia brasiliensis</i>	Whitlow Wort	237				
<i>Paronychia franciscana</i>	Chile Nailwort	237				
<i>Paspalum dilatatum</i>	Paspalum	214				
<i>Passiflora caerulea</i>	Blue Passion-fruit	210				
<i>Passiflora cinnabarina</i>	Red Passion-flower	237				
<i>Passiflora edulis</i>	Black Passion-fruit	236				
<i>Passiflora tarminiana</i>	Banana Passion-fruit	11				
<i>Pennisetum alopecuroides</i>	Swamp Foxtail-grass	209				
<i>Pennisetum clandestinum</i>	Kikuyu	159				
<i>Pennisetum macrourum</i>	African Feather-grass	101	✓			
<i>Pennisetum villosum</i>	Feathertop	209				
<i>Persicaria maculosa</i>	Redshank	101				
<i>Petasites fragrans</i>	Winter Heliotrope	92				
<i>Petrorhagia dubia</i>	Velvety Pink	134				
<i>Petrorhagia nanteuilii</i>	Childling Pink	134				
<i>Phalaris aquatica</i>	Toowoomba Canary-grass	152				
<i>Phalaris arundinacea</i>	Reed Canary-grass	74				
<i>Phalaris canariensis</i>	Canary Grass	209				
<i>Phalaris minor</i>	Lesser Canary-grass	104				
<i>Phleum pratense</i>	Timothy Grass	212				
<i>Physalis peruviana</i>	Cape Gooseberry	238				
<i>Physalis viscosa</i>	Sticky Ground-cherry	238	✓			
<i>Phytolacca octandra</i>	Red-ink Weed	173				
<i>Picea abies</i>	Norway Spruce	156				
<i>Picea pungens</i>	Blue Spruce	156				
<i>Pinus contorta</i>	Shore Pine	156				
<i>Pinus nigra</i>	Corsican Pine	147				
<i>Pinus patula</i>	Patula Pine	147				
<i>Pinus radiata</i>	Radiata Pine	6				

Appendix 2 Environmental weeds of the Ranges bioregions of Victoria listed by botanical name

Botanical Name	Common Name	Ranking Score	CALP Act	Vic Alert Weed	National Alert Weed	WONS
<i>Piptatherum miliaceum</i>	Rice Millet	209				
<i>Pittosporum eugenioides</i>	Tarata	155				
<i>Pittosporum undulatum</i>	Sweet Pittosporum	10				
<i>Plantago australis</i>	Southern Plantain	173				
<i>Plantago coronopus</i>	Buck's-horn Plantain	242				
<i>Plantago lanceolata</i>	Ribwort	179				
<i>Plantago major</i>	Greater Plantain	188				
<i>Plantago myosurus</i>	Mouse Plantain	236				
<i>Plectranthus ciliatus</i>	African Spur-flower	201				
<i>Poa annua</i>	Annual Meadow-grass	232				
<i>Poa bulbosa</i>	Bulbous Meadow-grass	241				
<i>Poa pratensis</i>	Kentucky Blue-grass	212				
<i>Polycarpon tetraphyllum</i>	Four-leaved Allseed	176				
<i>Polygala myrtifolia</i>	Myrtle-leaf Milkwort	210				
<i>Polygala vulgaris</i>	Common Milkwort	237				
<i>Polygonum arenastrum</i>	Wireweed	228				
<i>Polygonum aviculare</i>	Prostrate Knotweed	239				
<i>Polygonum bellardii</i>	Tree Hogweed	236				
<i>Polypogon monspeliensis</i>	Annual Beard-grass	233				
<i>Polypogon viridis</i>	Water Bent	233				
<i>Populus alba</i>	White Poplar	156				
<i>Populus nigra 'Italica'</i>	Lombardy Poplar	156				
<i>Populus tremula</i>	Aspen	156				
<i>Populus X canescens</i>	Grey Poplar	156				
<i>Potentilla indica</i>	Indian Strawberry	102				
<i>Proboscidea lutea</i>	Yellow-flower Devil's-claw	210				
<i>Prunella laciniata</i>	Cut-leaf Self-heal	236				
<i>Prunus cerasifera</i>	Cherry Plum	96				
<i>Prunus laurocerasus</i>	Cherry Laurel	101				
<i>Prunus lusitana</i>	Portugal Laurel	101				
<i>Prunus spinosa</i>	Blackthorn	96				
<i>Prunus X domestica</i>	Plum	209				
<i>Pseudoscleropodium purum</i>	Neat Feather-moss	127				
<i>Psoralea pinnata</i>	Blue Psoralea	210				
<i>Pyracantha angustifolia</i>	Orange Firethorn	91				
<i>Pyracantha crenatoserrata</i>	Broad-leaf Firethorn	91				
<i>Pyracantha crenulata</i>	Nepal Firethorn	91				
<i>Ranunculus flammula</i>	Lesser Spearwort	237				
<i>Ranunculus muricatus</i>	Sharp Buttercup	185				
<i>Ranunculus ophioglossifolius</i>	Snake-tongue Buttercup	185				
<i>Ranunculus parviflorus</i>	Small-flower Buttercup	182				
<i>Ranunculus repens</i>	Creeping Buttercup	20				
<i>Ranunculus sardous</i>	Pale Hairy Buttercup	182				
<i>Ranunculus sceleratus</i>	Celery Buttercup	101				
<i>Raphanus raphanistrum</i>	Wild Radish	215				
<i>Reseda luteola</i>	Weld	239				
<i>Rhamnus alaternus</i>	Italian Buckthorn	208				
<i>Ricinus communis</i>	Castor Oil Plant	237				
<i>Robinia pseudoacacia</i>	Locust Tree	75				
<i>Romulea minutilflora</i>	Small-flower Onion-grass	242				
<i>Romulea rosea</i>	Onion Grass	242				
<i>Rosa canina</i>	Dog Rose	236				
<i>Rosa rubiginosa</i>	Sweet Briar	98	✓			
<i>Rostraria cristata</i>	Annual Cat's-tail	188				
<i>Rubus anglocandicans</i>	Blackberry	4	✓			✓
<i>Rubus cissburiensis</i>	Blackberry	4	✓			✓

Appendix 2 Environmental weeds of the Ranges bioregions of Victoria listed by botanical name

Botanical Name	Common Name	Ranking Score	CALP Act	Vic Alert Weed	National Alert Weed	WONS
<i>Rubus erythrops</i>	Blackberry	4	✓			✓
<i>Rubus laciniatus</i>	Cut-leaf Bramble	4	✓			✓
<i>Rubus leucostachys</i>	Blackberry	4	✓			✓
<i>Rubus polyanthemus</i>	Blackberry	4	✓			✓
<i>Rubus rosaceus</i>	Blackberry	4	✓			✓
<i>Rubus ulmifolius</i>	Blackberry	4	✓			✓
<i>Rubus vestitus</i>	Blackberry	4	✓			✓
<i>Rumex conglomeratus</i>	Clustered Dock	134				
<i>Rumex crispus</i>	Curled Dock	179				
<i>Rumex obtusifolius</i>	Broad-leaf Dock	185				
<i>Rumex pulcher</i>	Fiddle Dock	134				
<i>Sagina procumbens</i>	Spreading Pearlwort	184				
<i>Salix alba</i>	White Willow	22	✓			✓
<i>Salix babylonica</i>	Weeping Willow	23				
<i>Salix cinerea</i>	Grey Sallow	10	✓			✓
<i>Salix fragilis</i>	Crack Willow	23	✓			✓
<i>Salix nigra</i>	Black Willow	73	✓			✓
<i>Salix purpurea</i>	Purple Osier	22	✓			✓
<i>Salix X rubens</i>	Basket Willow	23	✓			✓
<i>Salpichroa origanifolia</i>	Pampas Lily-of-the-Valley	213	✓			✓
<i>Salvia verbenaca</i>	Wild Sage	241				
<i>Sambucus nigra</i>	Common Elder	100				
<i>Sanguisorba minor</i>	Salad Burnet	228				
<i>Saponaria officinalis</i>	Common Soapwort	101				
<i>Scabiosa atropurpurea</i>	Pincushion	38				
<i>Schinus molle</i>	Pepper Tree	157				
<i>Schismus barbatus</i>	Arabian Grass	241				
<i>Scleranthus annuus</i>	Annual Knawel	229				
<i>Scolymus hispanicus</i>	Golden Thistle	202				
<i>Scorzonera laciniata</i>	Scorzonera	242				
<i>Selaginella kraussiana</i>	Garden Selaginella	47				
<i>Senecio angulatus</i>	Climbing Groundsel	161				
<i>Senecio jacobaea</i>	Ragwort	91	✓			
<i>Senecio pterophorus</i>	African Daisy	118	✓			
<i>Senecio vulgaris</i>	Common Groundsel	241				
<i>Setaria italica</i>	Italian Millet	239				
<i>Setaria parviflora</i>	Slender Pigeon Grass	176				
<i>Setaria pumila</i>	Pale Pigeon-grass	230				
<i>Setaria verticillata</i>	Whorled Pigeon-grass	95				
<i>Setaria viridis</i>	Green Pigeon-grass	212				
<i>Sherardia arvensis</i>	Field Madder	124				
<i>Silene gallica</i>	French Catchfly	230				
<i>Silene nocturna</i>	Mediterranean Catchfly	239				
<i>Silene vulgaris</i>	Bladder Champion	227				
<i>Silybum maritimum</i>	Variegated Thistle	213				
<i>Sinapis arvensis</i>	Charlock	104				
<i>Sisymbrium officinale</i>	Hedge Mustard	104				
<i>Sisymbrium orientale</i>	Indian Hedge-mustard	242				
<i>Sisyrinchium iridifolium</i>	Striped Rush-leaf	176				
<i>Solanum chenopodioides</i>	Whitetip Nightshade	91				
<i>Solanum douglasii</i>	Douglas' Nightshade	91				
<i>Solanum furcatum</i>	Broad Nightshade	172				
<i>Solanum marginatum</i>	White-edge Nightshade	238				
<i>Solanum mauritianum</i>	Wild Tobacco Tree	199				
<i>Solanum nigrum</i>	Black Nightshade	124				
<i>Solanum physalifolium</i>	Cherry Nightshade	211				

Appendix 2 Environmental weeds of the Ranges bioregions of Victoria listed by botanical name

Botanical Name	Common Name	Ranking Score	CALP Act	Vic Alert Weed	National Alert Weed	WONS
<i>Solanum pseudocapsicum</i>	Madeira Winter-cherry	100				
<i>Solanum triflorum</i>	Cut-leaf Nightshade	37				
<i>Soliva sessilis</i>	Jo Jo	238				
<i>Soliva stolonifera</i>	Carpet Burrweed	238				
<i>Sollya heterophylla</i>	Bluebell Creeper	37				
<i>Sonchus asper</i>	Rough Sow-thistle	115				
<i>Sonchus oleraceus</i>	Common Sow-thistle	115				
<i>Sorbus aucuparia</i>	Rowan	74				
<i>Sparaxis bulbifera</i>	Harlequin Flower	48				
<i>Sparaxis tricolor</i>	Tricolor Harlequin-flower	48				
<i>Spergula arvensis</i>	Corn Spurrey	185				
<i>Spergularia bocconii</i>	Bocconi's Sand-spurrey	239				
<i>Spergularia media</i>	Greater Sea-spurrey	242				
<i>Spergularia rubra</i>	Red Sand-spurrey	188				
<i>Sporobolus africanus</i>	Rat-tail Grass	211				
<i>Stachys arvensis</i>	Stagger Weed	176				
<i>Stellaria media</i>	Chickweed	124				
<i>Stellaria pallida</i>	Lesser Chickweed	124				
<i>Stenotaphrum secundatum</i>	Buffalo Grass	159				
<i>Symphoricarpos albus</i>	Snowberry	208				
<i>Syzygium smithii</i>	Lilly Pilly	161				
<i>Tagetes minuta</i>	Stinking Roger	212				
<i>Tanacetum parthenium</i>	Feverfew	236				
<i>Taraxacum officinale</i>	Garden Dandelion	115				
<i>Tolpis barbata</i>	Yellow Hawkweed	175				
<i>Torilis arvensis</i>	Spreading Hedge-parsley	227				
<i>Torilis nodosa</i>	Knotted Hedge-parsley	236				
<i>Tradescantia fluminensis</i>	Wandering Jew	20				
<i>Tragopogon porrifolius</i>	Salsify	242				
<i>Tribolium acutiflorum</i>	Desmazeria	212				
<i>Tribolium obliterum</i>	Desmazeria	212				
<i>Tribulus terrestris</i>	Caltrop	242				
<i>Trifolium angustifolium</i>	Narrow-leaf Clover	52				
<i>Trifolium arvense</i>	Hare's-foot Clover	52				
<i>Trifolium campestre</i>	Hop Clover	134				
<i>Trifolium cernuum</i>	Drooping-flower Clover	242				
<i>Trifolium dubium</i>	Suckling Clover	125				
<i>Trifolium glomeratum</i>	Cluster Clover	125				
<i>Trifolium ornithopodioides</i>	Birdsfoot Clover	239				
<i>Trifolium pratense</i>	Red Clover	239				
<i>Trifolium repens</i>	White Clover	41				
<i>Trifolium striatum</i>	Knotted Clover	239				
<i>Trifolium subterraneum</i>	Subterranean Clover	216				
<i>Trifolium tomentosum</i>	Woolly Clover	239				
<i>Tritonia crocata</i>	Orange Tritonia	210				
<i>Tritonia lineata</i>	Lined Tritonia	210				
<i>Tropaeolum majus</i>	Nasturtium	210				
<i>Ulex europaeus</i>	Gorse	15	✓			✓
<i>Ulmus aff. procera</i>	Common Elm	75				
<i>Urospermum picroides</i>	False Hawkbit	235				
<i>Urtica urens</i>	Small Nettle	241				
<i>Vaccaria hispanica</i>	Cow Soapwort	237				
<i>Valerianella eriocarpa</i>	Italian Corn-salad	239				
<i>Valerianella locusta</i>	Corn Salad	239				
<i>Vellereophyton dealbatum</i>	White Cudweed	133				
<i>Verbascum blattaria</i>	Moth Mullein	239				

Appendix 2 Environmental weeds of the Ranges bioregions of Victoria listed by botanical name

Botanical Name	Common Name	Ranking Score	CALP Act	Vic Alert Weed	National Alert Weed	WONS
<i>Verbascum creticum</i>	Cretan Mullein	239				
<i>Verbascum thapsus</i>	Great Mullein	176	✓			
<i>Verbascum virgatum</i>	Twiggy Mullein	176				
<i>Verbena bonariensis</i>	Purple-top Verbena	104				
<i>Verbena rigida</i>	Veined Verbena	209				
<i>Veronica anagallis-aquatica</i>	Blue Water-speedwell	185				
<i>Veronica arvensis</i>	Wall Speedwell	241				
<i>Veronica hederifolia</i>	Ivy-leaf Speedwell	239				
<i>Veronica peregrina</i>	Wandering Speedwell	239				
<i>Vicia disperma</i>	French Tiny Vetch	236				
<i>Vicia hirsuta</i>	Tiny Vetch	230				
<i>Vicia sativa</i>	Common Vetch	203				
<i>Vicia tetrasperma</i>	Slender Vetch	230				
<i>Vinca major</i>	Blue Periwinkle	15				
<i>Vinca minor</i>	Lesser Periwinkle	21				
<i>Viola arvensis</i>	Field Pansy	129				
<i>Viola odorata</i>	Common Violet	240				
<i>Viola riviniana</i>	Common Dog-violet	237				
<i>Vulpia bromoides</i>	Squirrel-tail Fescue	43				
<i>Vulpia ciliata</i>	Fringed Fescue	43				
<i>Vulpia fasciculata</i>	Dune Fescue	49				
<i>Vulpia muralis</i>	Wall Fescue	49				
<i>Vulpia myuros</i>	Rat's-tail Fescue	52				
<i>Watsonia borbonica</i>	Rosy Watsonia	210				
<i>Watsonia meriana</i>	Bugle Lily	15	✓			
<i>Watsonia versfeldii</i>	Pink Watsonia	105				
<i>Xanthium occidentale</i>	Noogoora Burr	103	✓			
<i>Xanthium orientale</i>	Californian Burr	211	✓			
<i>Xanthium spinosum</i>	Bathurst Burr	242	✓			
<i>Zantedeschia aethiopica</i>	White Arum-lily	21				

Appendix 3

Environmental weeds of the Ranges bioregions of Victoria listed by common name

Common Name	Botanical Name	Ranking Score	CALP Act	Vic Alert Weed	National Alert Weed	WONS
Aaron's Beard	<i>Hypericum calycinum</i>	200				
African Box-thorn	<i>Lycium ferocissimum</i>	49	✓			
African Cornflag	<i>Chasmanthe floribunda</i>	66				
African Daisy	<i>Senecio pterophorus</i>	118	✓			
African Feather-grass	<i>Pennisetum macrourum</i>	101	✓			
African Love-grass	<i>Eragrostis curvula</i>	239	✓			
African Spur-flower	<i>Plectranthus ciliatus</i>	201				
Agapanthus	<i>Agapanthus praecox</i>	147				
Ageratina	<i>Ageratina ligustrina</i>	37				
Aluminium Plant	<i>Lamium galeobdolon</i>	39				
American Crows-foot Grass	<i>Eleusine tristachya</i>	239				
Angled Heath	<i>Erica quadrangularis</i>	102				
Angled Onion	<i>Allium triquetrum</i>	12	✓			
Annual Beard-grass	<i>Polypogon monspeliensis</i>	233				
Annual Cat's-tail	<i>Rostraria cristata</i>	188				
Annual Knawel	<i>Scleranthus annuus</i>	229				
Annual Meadow-grass	<i>Poa annua</i>	232				
Annual Veldt-grass	<i>Ehrharta longiflora</i>	40				
Apple	<i>Malus pumila</i>	216				
Apple Mint	<i>Mentha X rotundifolia</i>	102				
Arabian Grass	<i>Schismus barbatus</i>	241				
Argentine Cress	<i>Lepidium bonariense</i>	242				
Asparagus Fern	<i>Asparagus scandens</i>	19				
Aspen	<i>Populus tremula</i>	156				
Asterolinon	<i>Asterolinon linum-stellatum</i>	237				
Aster-weed	<i>Aster subulatus</i>	52				
Avellinia	<i>Avellinia michelii</i>	124				
Awned Club-sedge	<i>Isolepis hystrix</i>	187				
Baboon Flower	<i>Babiana angustifolia</i>	216				
Balearic Mouse-ear Chickweed	<i>Cerastium balearicum</i>	172				
Banana Passion-fruit	<i>Passiflora tarminiana</i>	11				
Barley	<i>Hordeum vulgare</i>	178				
Barley-grass	<i>Hordeum leporinum</i>	178				
Barley-grass	<i>Hordeum murinum</i>	178				
Barnyard Grass	<i>Echinochloa crus-galli</i>	242				
Basket Willow	<i>Salix X rubens</i>	23	✓			✓
Bastard's Fumitory	<i>Fumaria bastardii</i>	212				
Bathurst Burr	<i>Xanthium spinosum</i>	242	✓			
Bearded Oat	<i>Avena barbata</i>	214				
Bear's Breach	<i>Acanthus mollis</i>	156				
Bellardia	<i>Bartsia trixago</i>	236				
Berry-flower Heath	<i>Erica baccans</i>	102				
Big Heron's-bill	<i>Erodium botrys</i>	106				
Birch	<i>Betula aff. pubescens</i>	155				
Birdsfoot Clover	<i>Trifolium ornithopodioides</i>	239				
Bird's-foot Trefoil	<i>Lotus corniculatus</i>	176				
Bishop's Weed	<i>Ammi majus</i>	209				
Black Bindweed	<i>Fallopia convolvulus</i>	100				
Black Cypress-pine	<i>Callitris endlicheri</i>	24				
Black Horehound	<i>Ballota nigra</i>	101				
Black Knapweed	<i>Centaurea nigra</i>	208	✓	✓		
Black Medic	<i>Medicago lupulina</i>	47				
Black Mustard	<i>Brassica nigra</i>	233				
Black Nightshade	<i>Solanum nigrum</i>	124				
Black Passion-fruit	<i>Passiflora edulis</i>	236				
Black Willow	<i>Salix nigra</i>	73	✓			✓

Appendix 3 Environmental weeds of the Ranges bioregions of Victoria listed by common name

Common Name	Botanical Name	Ranking Score	CALP Act	Vic Alert Weed	National Alert Weed	WONS
Blackberry	<i>Rubus anglocandicans</i>	4	✓			✓
Blackberry	<i>Rubus cissburiensis</i>	4	✓			✓
Blackberry	<i>Rubus erythrops</i>	4	✓			✓
Blackberry	<i>Rubus leucostachys</i>	4	✓			✓
Blackberry	<i>Rubus polyanthemus</i>	4	✓			✓
Blackberry	<i>Rubus rosaceus</i>	4	✓			✓
Blackberry	<i>Rubus ulmifolius</i>	4	✓			✓
Blackberry	<i>Rubus vestitus</i>	4	✓			✓
Blackthorn	<i>Prunus spinosa</i>	96				
Bladder Champion	<i>Silene vulgaris</i>	227				
Blue Morning-glory	<i>Ipomoea indica</i>	201				
Blue Passion-fruit	<i>Passiflora caerulea</i>	210				
Blue Periwinkle	<i>Vinca major</i>	15				
Blue Psoralea	<i>Psoralea pinnata</i>	210				
Blue Spruce	<i>Picea pungens</i>	156				
Blue Stars	<i>Aristea ecklonii</i>	183				
Blue Water-speedwell	<i>Veronica anagallis-aquatica</i>	185				
Bluebell Creeper	<i>Sollya heterophylla</i>	37				
Blunt-leaf Wattle	<i>Acacia obtusifolia</i>	120				
Bocconi's Sand-spurrey	<i>Spergularia bocconii</i>	239				
Bokhara Clover	<i>Melilotus albus</i>	236				
Boneseed	<i>Chrysanthemoides monilifera</i>	13	✓			✓
Bowie Wood-sorrel	<i>Oxalis bowiei</i>	93				
Box-elder Maple	<i>Acer negundo</i>	1				
Brazilian Wood-sorrel	<i>Oxalis brasiliensis</i>	93				
Bridal Creeper	<i>Asparagus asparagoides</i>	10	✓			✓
Bristly Hawksbeard	<i>Crepis setosa</i>	118				
Broad Nightshade	<i>Solanum furcatum</i>	172				
Broad-leaf Cotton-bush	<i>Gomphocarpus cancellatus</i>	129				
Broad-leaf Dock	<i>Rumex obtusifolius</i>	185				
Broad-leaf Firethorn	<i>Pyracantha crenatoserrata</i>	91				
Brown Watercress	<i>Nasturtium microphyllum</i>	131				
Brown-top Bent	<i>Agrostis capillaris</i>	94				
Buchan Weed	<i>Hirschfeldia incana</i>	104				
Buck's-horn Plantain	<i>Plantago coronopus</i>	242				
Buffalo Grass	<i>Stenotaphrum secundatum</i>	159				
Bugle Lily	<i>Watsonia meriana</i>	15	✓			
Bugloss	<i>Anchusa arvensis</i>	185				
Bugloss Fiddle-neck	<i>Amsinckia lycopsoides</i>	239	✓			
Bulbous Meadow-grass	<i>Poa bulbosa</i>	241				
Bulbous Rush	<i>Juncus bulbosus</i>	130				
Burgan	<i>Kunzea ericoides</i>	189				
Burr Medic	<i>Medicago polymorpha</i>	242				
Butterfly Bush	<i>Buddleja davidii</i>	102				
Byzantine Gladiolus	<i>Gladiolus communis</i>	210				
Californian Burr	<i>Xanthium orientale</i>	211	✓			
Californian Poppy	<i>Eschscholzia californica</i>	104				
Californian Stinkweed	<i>Navarretia squarrosa</i>	131				
Caltrop	<i>Tribulus terrestris</i>	242				
Canadian Fleabane	<i>Conyza canadensis</i>	115				
Canary Grass	<i>Phalaris canariensis</i>	209				
Cape Forget-me-not	<i>Anchusa capensis</i>	200				
Cape Gooseberry	<i>Physalis peruviana</i>	238				
Cape Honey-flower	<i>Melianthus major</i>	240				
Cape Ivy	<i>Delairea odorata</i>	77				
Cape Wattle	<i>Paraserianthes lophantha</i>	237				

Appendix 3 Environmental weeds of the Ranges bioregions of Victoria listed by common name

Common Name	Botanical Name	Ranking Score	CALP Act	Vic Alert Weed	National Alert Weed	WONS
Cape Weed	<i>Arctotheca calendula</i>	232				
Caper Spurge	<i>Euphorbia lathyris</i>	240				
Capitate Rush	<i>Juncus capitatus</i>	133				
Carpet Burrweed	<i>Soliva stolonifera</i>	238				
Carpet Grass	<i>Axonopus fissifolius</i>	209				
Carrot	<i>Daucus carota</i>	242				
Castor Oil Plant	<i>Ricinus communis</i>	237				
Cedar Wattle	<i>Acacia elata</i>	39				
Celery Buttercup	<i>Ranunculus sceleratus</i>	101				
Chaffweed	<i>Anagallis minima</i>	130				
Chalkwort	<i>Gypsophila tubulosa</i>	130				
Charlock	<i>Sinapis arvensis</i>	104				
Cherry Laurel	<i>Prunus laurocerasus</i>	101				
Cherry Nightshade	<i>Solanum physalifolium</i>	211				
Cherry Plum	<i>Prunus cerasifera</i>	96				
Chickweed	<i>Stellaria media</i>	124				
Childling Pink	<i>Petrorhagia nanteuillii</i>	134				
Chile Nailwort	<i>Paronychia franciscana</i>	237				
Chilean Needle-grass	<i>Nassella neesiana</i>	94	✓			✓
Chinese Box-thorn	<i>Lycium barbarum</i>	100				
Chinese Wormwood	<i>Artemisia verlotiorum</i>	46				
Cleavers	<i>Galium aparine</i>	212				
Climbing Groundsel	<i>Senecio angulatus</i>	161				
Cluster Clover	<i>Trifolium glomeratum</i>	125				
Clustered Dock	<i>Rumex conglomeratus</i>	134				
Coast Barb-grass	<i>Parapholis incurva</i>	241				
Coast Tea-tree	<i>Leptospermum laevigatum</i>	108				
Coast Wattle	<i>Acacia longifolia</i> subsp. <i>sophorae</i>	131				
Cocksfoot	<i>Dactylis glomerata</i>	97				
Columbine	<i>Aquilegia vulgaris</i>	237				
Common Arisarum	<i>Arisarum vulgare</i>	93				
Common Barb-grass	<i>Hainardia cylindrica</i>	239				
Common Bitter-cress	<i>Cardamine hirsuta</i>	178				
Common Centaury	<i>Centaureum erythraea</i>	115				
Common Chamomile	<i>Chamaemelum nobile</i>	231				
Common Dipogon	<i>Dipogon lignosus</i>	156				
Common Dog-violet	<i>Viola riviniana</i>	237				
Common Elder	<i>Sambucus nigra</i>	100				
Common Elm	<i>Ulmus</i> aff. <i>procera</i>	75				
Common Evening-primrose	<i>Oenothera stricta</i>	185				
Common Fiddle-neck	<i>Amsinckia intermedia</i>	239	✓			
Common Fumitory	<i>Fumaria officinalis</i>	212				
Common Groundsel	<i>Senecio vulgaris</i>	241				
Common Heron's-bill	<i>Erodium cicutarium</i>	106				
Common Milkwort	<i>Polygala vulgaris</i>	237				
Common Mouse-ear Chickweed	<i>Cerastium fontanum</i>	175				
Common Mouse-ear Chickweed	<i>Cerastium glomeratum</i>	178				
Common Peppergrass	<i>Lepidium africanum</i>	242				
Common Prickly-pear	<i>Opuntia stricta</i>	75	✓			
Common Soap Aloe	<i>Aloe maculata</i>	237				
Common Soapwort	<i>Saponaria officinalis</i>	101				
Common Sow-thistle	<i>Sonchus oleraceus</i>	115				
Common Thorn-apple	<i>Datura stramonium</i>	186	✓			
Common Tickseed	<i>Coreopsis lanceolata</i>	47				
Common Vetch	<i>Vicia sativa</i>	203				
Common Violet	<i>Viola odorata</i>	240				

Appendix 3 Environmental weeds of the Ranges bioregions of Victoria listed by common name

Common Name	Botanical Name	Ranking Score	CALP Act	Vic Alert Weed	National Alert Weed	WONS
Cootamundra Wattle	<i>Acacia baileyana</i>	39				
Corn Salad	<i>Valerianella locusta</i>	239				
Corn Spurrey	<i>Spergula arvensis</i>	185				
Corn Toad-flax	<i>Linaria arvensis</i>	242				
Corsican Pine	<i>Pinus nigra</i>	147				
Couch	<i>Cynodon dactylon</i>	186				
Cow Soapwort	<i>Vaccaria hispanica</i>	237				
Crack Willow	<i>Salix fragilis</i>	23	✓			✓
Creeping Bear's-ear	<i>Arctotheca prostrata</i>	236				
Creeping Bent	<i>Agrostis stolonifera</i>	40				
Creeping Buttercup	<i>Ranunculus repens</i>	20				
Creeping Jenny	<i>Lysimachia nummularia</i>	210				
Crested Dog's-tail	<i>Cynosurus cristatus</i>	175				
Cretan Mullein	<i>Verbascum creticum</i>	239				
Curled Dock	<i>Rumex crispus</i>	179				
Curtis's Mouse-ear Chickweed	<i>Cerastium pumilum</i>	178				
Cut-leaf Bramble	<i>Rubus laciniatus</i>	4	✓			✓
Cut-leaf Crane's-bill	<i>Geranium dissectum</i>	212				
Cut-leaf Nightshade	<i>Solanum triflorum</i>	37				
Cut-leaf Self-heal	<i>Prunella laciniata</i>	236				
Darwin's Barberry	<i>Berberis darwinii</i>	39				
Dead Nettle	<i>Lamium amplexicaule</i>	134				
Delicate Hair-grass	<i>Aira elegantissima</i>	124				
Dense Flat-sedge	<i>Cyperus congestus</i>	212				
Dense-flower Fumitory	<i>Fumaria densiflora</i>	212				
Deptford Pink	<i>Dianthus armeria</i>	174				
Desert Ash	<i>Fraxinus angustifolia</i>	11				
Desmazeria	<i>Tribolium acutiflorum</i>	212				
Desmazeria	<i>Tribolium obliterum</i>	212				
Divided Sedge	<i>Carex divisa</i>	20				
Dog Rose	<i>Rosa canina</i>	236				
Dotted Sedge	<i>Carex punctata</i>	101				
Douglas' Nightshade	<i>Solanum douglasii</i>	91				
Dove's Foot	<i>Geranium molle</i>	212				
Drain Flat-sedge	<i>Cyperus eragrostis</i>	53				
Drooping Prickly-pear	<i>Opuntia monacantha</i>	156	✓			
Drooping-flower Clover	<i>Trifolium cernuum</i>	242				
Dune Fescue	<i>Vulpia fasciculata</i>	49				
Dusky Coral-pea	<i>Kennedia rubicunda</i>	213				
Dwarf Cypress-pine	<i>Callitris oblonga</i>	162				
Dwarf Mallow	<i>Malva neglecta</i>	240				
Early Black-wattle	<i>Acacia decurrens</i>	42				
Early Hair-grass	<i>Aira praecox</i>	124				
Early Wintercress	<i>Barbarea verna</i>	239				
Elegant Poison-berry	<i>Cestrum elegans</i>	92				
English Bluebell	<i>Hyacinthoides non-scripta</i>	237				
English Broom	<i>Cytisus scoparius</i>	3	✓			
English Daisy	<i>Bellis perennis</i>	230				
English Holly	<i>Ilex aquifolium</i>	10				
English Ivy	<i>Hedera helix</i>	1				
Erect Chickweed	<i>Moenchia erecta</i>	124				
European Privet	<i>Ligustrum vulgare</i>	145				
Evening-flower Gladiolus	<i>Gladiolus tristis</i>	102				
False Hawkbit	<i>Urospermum picroides</i>	235				
False Oat-grass	<i>Arrhenatherum elatius</i>	213				
Fat Hen	<i>Chenopodium album</i>	241				

Appendix 3 Environmental weeds of the Ranges bioregions of Victoria listed by common name

Common Name	Botanical Name	Ranking Score	CALP Act	Vic Alert Weed	National Alert Weed	WONS
Feathertop	<i>Pennisetum villosum</i>	209				
Fennel	<i>Foeniculum vulgare</i>	212	✓			
Fern Grass	<i>Catapodium rigidum</i>	184				
Ferny Cotula	<i>Cotula bipinnata</i>	124				
Feverfew	<i>Tanacetum parthenium</i>	236				
Fiddle Dock	<i>Rumex pulcher</i>	134				
Field Forget-me-not	<i>Myosotis arvensis</i>	239				
Field Madder	<i>Sherardia arvensis</i>	124				
Field Pansy	<i>Viola arvensis</i>	129				
Fig	<i>Ficus carica</i>	208				
Fishbone Cotoneaster	<i>Cotoneaster horizontalis</i>	211				
Flatweed	<i>Hypochoeris radicata</i>	115				
Flax	<i>Linum usitatissimum</i>	239				
Flax-leaf Broom	<i>Genista linifolia</i>	12	✓			
Flaxleaf Fleabane	<i>Conyza bonariensis</i>	115				
Floating Sweet-grass	<i>Glyceria notata</i>	20				
Flowering Ash	<i>Fraxinus ornus</i>	156				
Four-leaved Allseed	<i>Polycarpon tetraphyllum</i>	176				
Foxglove	<i>Digitalis purpurea</i>	186				
Freesia	<i>Freesia alba x Freesia leichtlinii</i>	102				
French Catchfly	<i>Silene gallica</i>	230				
French Cudweed	<i>Logfia gallica</i>	239				
French Flax	<i>Linum trigynum</i>	239				
French Tiny Vetch	<i>Vicia disperma</i>	236				
Fringed Fescue	<i>Vulpia ciliata</i>	43				
Fringed Wattle	<i>Acacia fimbriata</i>	174				
Frosty Wattle	<i>Acacia schinoides</i>	210				
Fuchsia	<i>Fuchsia magellanica</i>	19				
Galaxia	<i>Moraea fugacissima</i>	240				
Galenia	<i>Galenia pubescens</i>	213				
Gallant Soldier	<i>Galinsoga parviflora</i>	236				
Garden Dandelion	<i>Taraxacum officinale</i>	115				
Garden Selaginella	<i>Selaginella kraussiana</i>	47				
Giant Honey-myrtle	<i>Melaleuca armillaris</i>	213				
Giant Knotweed	<i>Fallopia sachalinensis</i>	10	✓	✓		
Glandular Willow-herb	<i>Epilobium ciliatum</i>	175				
Golden Honey-balls	<i>Buddleja globosa</i>	102				
Golden Thistle	<i>Scolymus hispanicus</i>	202				
Golden Wreath Wattle	<i>Acacia saligna</i>	243				
Gorse	<i>Ulex europaeus</i>	15	✓			✓
Great Brome	<i>Bromus diandrus</i>	106				
Great Mullein	<i>Verbascum thapsus</i>	176	✓			
Great Willow-herb	<i>Epilobium hirsutum</i>	175		✓		
Greater Bindweed	<i>Calystegia silvatica</i>	162				
Greater Bird's-foot Trefoil	<i>Lotus uliginosus</i>	176				
Greater Plantain	<i>Plantago major</i>	188				
Greater Sea-spurrey	<i>Spergularia media</i>	242				
Green Pigeon-grass	<i>Setaria viridis</i>	212				
Green Poison-berry	<i>Cestrum parqui</i>	92				
Grey Cotoneaster	<i>Cotoneaster franchetii</i>	10				
Grey Poplar	<i>Populus X canescens</i>	156				
Grey Sallow	<i>Salix cinerea</i>	10	✓			✓
Hairy Bird's-foot Trefoil	<i>Lotus subbiflorus</i>	176				
Hairy Fiddle-neck	<i>Amsinckia calycina</i>	239	✓			
Hairy Hawkbit	<i>Leontodon taraxacoides</i>	241				
Hairy Toadflax	<i>Kickxia elatine</i>	242				

Appendix 3 Environmental weeds of the Ranges bioregions of Victoria listed by common name

Common Name	Botanical Name	Ranking Score	CALP Act	Vic Alert Weed	National Alert Weed	WONS
Hard Rush	<i>Juncus inflexus</i>	209				
Hare's-foot Clover	<i>Trifolium arvense</i>	52				
Hare's-tail Grass	<i>Lagurus ovatus</i>	241				
Harlequin Flower	<i>Sparaxis bulbifera</i>	48				
Hastate Orache	<i>Atriplex prostrata</i>	215				
Hawthorn	<i>Crataegus monogyna</i>	13				
Heart-leaf Ice-plant	<i>Aptenia cordifolia</i>	102				
Heath Grass	<i>Danthonia decumbens</i>	236				
Hedge Mustard	<i>Sisymbrium officinale</i>	104				
Hedge Privet	<i>Ligustrum ovalifolium</i>	145				
Hemlock	<i>Conium maculatum</i>	104	✓			
Highland Bent	<i>Agrostis castellana</i>	94				
Hillock Bush	<i>Melaleuca hypericifolia</i>	213				
Himalayan Cotoneaster	<i>Cotoneaster simonsii</i>	10				
Himalayan Honeysuckle	<i>Leycesteria formosa</i>	10				
Himalayan Strawberry-tree	<i>Cornus capitata</i>	210				
Honesty	<i>Lunaria annua</i>	237				
Hop Clover	<i>Trifolium campestre</i>	134				
Horehound	<i>Marrubium vulgare</i>	103	✓			
Horsetail	<i>Equisetum</i> spp.	12	✓	✓	✓	
Indian Fig	<i>Opuntia ficus-indica</i>	156				
Indian Hedge-mustard	<i>Sisymbrium orientale</i>	242				
Indian Strawberry	<i>Potentilla indica</i>	102				
Irish Strawberry Tree	<i>Arbutus unedo</i>	65				
Italian Buckthorn	<i>Rhamnus alaternus</i>	208				
Italian Corn-salad	<i>Valerianella eriocarpa</i>	239				
Italian Millet	<i>Setaria italica</i>	239				
Ivy-leaf Speedwell	<i>Veronica hederifolia</i>	239				
Japanese Honeysuckle	<i>Lonicera japonica</i>	1				
Japanese Knotweed	<i>Fallopia japonica</i>	10	✓	✓		
Japanese Maple	<i>Acer palmatum</i>	154				
Jo Jo	<i>Soliva sessilis</i>	238				
Jointed Rush	<i>Juncus articulatus</i>	52				
Karamu	<i>Coprosma robusta</i>	10				
Kentucky Blue-grass	<i>Poa pratensis</i>	212				
Kikuyu	<i>Pennisetum clandestinum</i>	159				
Knotted Clover	<i>Trifolium striatum</i>	239				
Knotted Hedge-parsley	<i>Torilis nodosa</i>	236				
Lampranthus	<i>Lampranthus immelmaniae</i>	102				
Large Quaking-grass	<i>Briza maxima</i>	44				
Large-flower Wood-sorrel	<i>Oxalis purpurea</i>	93				
Large-leaf Cotoneaster	<i>Cotoneaster glaucophyllus</i>	10				
Large-leaf Privet	<i>Ligustrum lucidum</i>	64				
Large-leaf Wood-sorrel	<i>Oxalis latifolia</i>	93				
Lemon Balm	<i>Melissa officinalis</i>	102				
Lesser Canary-grass	<i>Phalaris minor</i>	104				
Lesser Chickweed	<i>Stellaria pallida</i>	124				
Lesser Periwinkle	<i>Vinca minor</i>	21				
Lesser Quaking-grass	<i>Briza minor</i>	125				
Lesser Spearwort	<i>Ranunculus flammula</i>	237				
Lesser Swine-cress	<i>Lepidium didymum</i>	185				
Lesser Thyme-leaved Sandwort	<i>Arenaria leptoclados</i>	236				
Levantine Mouse-ear Chickweed	<i>Cerastium comatum</i>	172				
Lilly Pilly	<i>Syzygium smithii</i>	161				
Lined Tritonia	<i>Tritonia lineata</i>	210				
Little Medic	<i>Medicago minima</i>	242				

Appendix 3 Environmental weeds of the Ranges bioregions of Victoria listed by common name

Common Name	Botanical Name	Ranking Score	CALP Act	Vic Alert Weed	National Alert Weed	WONS
Locust Tree	<i>Robinia pseudoacacia</i>	75				
Lombardy Poplar	<i>Populus nigra</i> 'Italica'	156				
Long-headed Poppy	<i>Papaver dubium</i>	239				
Long-spine Thorn-apple	<i>Datura ferox</i>	240	✓			
Madeira Vine	<i>Anredera cordifolia</i>	201				
Madeira Winter-cherry	<i>Solanum pseudocapsicum</i>	100				
Madrid Brome	<i>Bromus madritensis</i>	97				
Mallow of Nice	<i>Malva nicaeensis</i>	240				
Malta Thistle	<i>Centaurea melitensis</i>	184				
Manna Grass	<i>Glyceria declinata</i>	20				
Marsh Fox-tail	<i>Alopecurus geniculatus</i>	185				
Matted Peppergrass	<i>Lepidium strictum</i>	185				
Mediterranean Barley-grass	<i>Hordeum hystrix</i>	178				
Mediterranean Brome	<i>Bromus lanceolatus</i>	238				
Mediterranean Catchfly	<i>Silene nocturna</i>	239				
Mediterranean Loosestrife	<i>Lythrum junceum</i>	236				
Mediterranean Turnip	<i>Brassica tournefortii</i>	233				
Michaelmas Daisy	<i>Aster lanceolatus</i>	240				
Michaelmas Daisy	<i>Aster novi-belgii</i>	240				
Milfoil	<i>Achillea millefolium</i>	101				
Miner's Lettuce	<i>Claytonia perfoliata</i>	210				
Mirror Bush	<i>Coprosma repens</i>	73				
Montbretia	<i>Crococsmia X crocosmiiflora</i>	3				
Monterey Cypress	<i>Cupressus macrocarpa</i>	207				
Montpellier Broom	<i>Genista monspessulana</i>	11	✓			
Moth Mullein	<i>Verbascum blattaria</i>	239				
Mouse Plantain	<i>Plantago myosurus</i>	236				
Mouse-ear Chickweed	<i>Cerastium semidecandrum</i>	178				
Mullumbimby Couch	<i>Cyperus brevifolius</i>	128				
Musk Monkey-flower	<i>Mimulus moschatus</i>	50				
Musk Weed	<i>Myagrum perfoliatum</i>	240				
Musky Heron's-bill	<i>Erodium moschatum</i>	211				
Myrtle-leaf Milkwort	<i>Polygala myrtifolia</i>	210				
Narrow-leaf Bower-wattle	<i>Acacia cognata</i>	237				
Narrow-leaf Clover	<i>Trifolium angustifolium</i>	52				
Nasturtium	<i>Tropaeolum majus</i>	210				
Neat Feather-moss	<i>Pseudoscleropodium purum</i>	127				
Nepal Firethorn	<i>Pyracantha crenulata</i>	91				
New Zealand Cabbage-tree	<i>Cordyline australis</i>	100				
Nit-grass	<i>Gastroidium phleoides</i>	239				
Noogoora Burr	<i>Xanthium occidentale</i>	103	✓			
Northern Barley-grass	<i>Hordeum glaucum</i>	241				
Norway Spruce	<i>Picea abies</i>	156				
Olive	<i>Olea europaea</i>	46				
Onion Grass	<i>Romulea rosea</i>	242				
Opium Poppy	<i>Papaver somniferum</i>	239				
Orange Firethorn	<i>Pyracantha angustifolia</i>	91				
Orange Fox-tail	<i>Alopecurus aequalis</i>	185				
Orange Hawkweed	<i>Hieracium aurantiacum</i>	19	✓	✓	✓	
Orange Tritonia	<i>Tritonia crocata</i>	210				
Oregon Grape	<i>Mahonia aquifolium</i>	39				
Ovens Wattle	<i>Acacia pravissima</i>	93				
Ox-eye Daisy	<i>Leucanthemum vulgare</i>	212	✓			
Ox-tongue	<i>Helminthotheca echioides</i>	214				
Oyster Bay Pine	<i>Callitris rhomboidea</i>	105				
Paddy Melon	<i>Cucumis myriocarpus</i>	242				

Appendix 3 Environmental weeds of the Ranges bioregions of Victoria listed by common name

Common Name	Botanical Name	Ranking Score	CALP Act	Vic Alert Weed	National Alert Weed	WONS
Pale Hairy Buttercup	<i>Ranunculus sardous</i>	182				
Pale Pigeon-grass	<i>Setaria pumila</i>	230				
Pale Wood-sorrel	<i>Oxalis incarnata</i>	39				
Pampas Grass	<i>Cortaderia selloana</i>	73				
Pampas Lily-of-the-Valley	<i>Salpichroa organifolia</i>	213	✓			✓
Panic Veldt-grass	<i>Ehrharta erecta</i>	40				
Parsley Piert	<i>Aphanes arvensis</i>	124				
Paspalum	<i>Paspalum dilatatum</i>	214				
Paterson's Curse	<i>Echium plantagineum</i>	214	✓			
Patula Pine	<i>Pinus patula</i>	147				
Pennyroyal	<i>Mentha pulegium</i>	213				
Pepper Tree	<i>Schinus molle</i>	157				
Peppermint	<i>Mentha X piperita</i>	102				
Perennial Rye-grass	<i>Lolium perenne</i>	212				
Perennial Veldt-grass	<i>Ehrharta calycina</i>	212				
Peruvian Parrot-lily	<i>Alstroemeria psittacina</i>	93				
Petty Spurge	<i>Euphorbia peplus</i>	178				
Pig's Ear	<i>Cotyledon orbiculata</i>	210				
Pimpernel	<i>Anagallis arvensis</i>	133				
Pincushion	<i>Scabiosa atropurpurea</i>	38				
Pincushion Hakea	<i>Hakea laurina</i>	216				
Pink Pampas-grass	<i>Cortaderia jubata</i>	73				
Pink Shamrock	<i>Oxalis debilis</i>	93				
Pink Watsonia	<i>Watsonia versfeldii</i>	105				
Pinwheel Aeonium	<i>Aeonium haworthii</i>	213				
Plum	<i>Prunus X domestica</i>	209				
Poor Man's Orchid	<i>Impatiens balfouri</i>	237				
Portugal Laurel	<i>Prunus lusitanica</i>	101				
Prairie Grass	<i>Bromus catharticus</i>	103				
Pregnant Onion	<i>Ornithogalum longibracteatum</i>	210				
Prickly Barnyard-grass	<i>Echinochloa muricata</i>	242				
Prickly Lettuce	<i>Lactuca serriola</i>	241				
Proliferous Club-sedge	<i>Isolepis prolifera</i>	101				
Prostrate Knotweed	<i>Polygonum aviculare</i>	239				
Purple Cudweed	<i>Gamochaeta purpurea</i>	178				
Purple Osier	<i>Salix purpurea</i>	22	✓			✓
Purple-top Verbena	<i>Verbena bonariensis</i>	104				
Queensland Silver Wattle	<i>Acacia podalyriifolia</i>	231				
Quicksilver Grass	<i>Aira cupaniana</i>	124				
Radiata Pine	<i>Pinus radiata</i>	6				
Ragwort	<i>Senecio jacobaea</i>	91	✓			
Rambling Dock	<i>Acetosa sagittata</i>	239				
Rat's-tail Fescue	<i>Vulpia myuros</i>	52				
Rat-tail Grass	<i>Sporobolus africanus</i>	211				
Red Bartsia	<i>Parentucellia latifolia</i>	188				
Red Brome	<i>Bromus rubens</i>	106				
Red Clover	<i>Trifolium pratense</i>	239				
Red Fescue	<i>Festuca rubra</i>	236				
Red Passion-flower	<i>Passiflora cinnabarina</i>	237				
Red Sand-spurrey	<i>Spergularia rubra</i>	188				
Red Valerian	<i>Centranthus ruber</i>	236				
Reddish Evening-primrose	<i>Oenothera glazioviana</i>	239				
Red-flower Mallow	<i>Modiola caroliniana</i>	242				
Red-ink Weed	<i>Phytolacca octandra</i>	173				
Redshank	<i>Persicaria maculosa</i>	101				
Red-top Bent	<i>Agrostis gigantea</i>	100				

Appendix 3 Environmental weeds of the Ranges bioregions of Victoria listed by common name

Common Name	Botanical Name	Ranking Score	CALP Act	Vic Alert Weed	National Alert Weed	WONS
Reed Canary-grass	<i>Phalaris arundinacea</i>	74				
Reed Sweet-grass	<i>Glyceria maxima</i>	20				
Reptile Crassula	<i>Crassula ericoides</i>	237				
Ribwort	<i>Plantago lanceolata</i>	179				
Rice Cut-grass	<i>Leersia oryzoides</i>	101				
Rice Millet	<i>Piptatherum miliaceum</i>	209				
Rock Wattle	<i>Acacia rupicola</i>	240				
Rose Champion	<i>Lychnis coronaria</i>	231				
Rose Evening-primrose	<i>Oenothera rosea</i>	239				
Rosy Watsonia	<i>Watsonia borbonica</i>	210				
Rough Conyza	<i>Conyza primulaefolia</i>	115				
Rough Dog's-tail	<i>Cynosurus echinatus</i>	98				
Rough Sow-thistle	<i>Sonchus asper</i>	115				
Rounded Chamomile	<i>Matricaria matricarioides</i>	239				
Round-leaved Toadflax	<i>Kickxia spuria</i>	242				
Rowan	<i>Sorbus aucuparia</i>	74				
Russell Lupin	<i>Lupinus polyphyllus</i>	240				
Saffron Thistle	<i>Carthamus lanatus</i>	106	✓			
Salad Burnet	<i>Sanguisorba minor</i>	228				
Salsify	<i>Tragopogon porrifolius</i>	242				
Sand Bird's-foot	<i>Ornithopus pinnatus</i>	236				
Scorzonera	<i>Scorzonera laciniata</i>	242				
Scotch Thistle	<i>Onopordum acanthium</i>	103	✓			
Sea Barley-grass	<i>Hordeum marinum</i>	178				
Sea Centaury	<i>Centaurium maritimum</i>	241				
Sea Mouse-ear Chickweed	<i>Cerastium diffusum</i>	172				
Seaside Daisy	<i>Erigeron karvinskianus</i>	210				
Serrated Tussock	<i>Nassella trichotoma</i>	94	✓			
Shade Crassula	<i>Crassula multicaeva</i>	102				
Sharp Buttercup	<i>Ranunculus muricatus</i>	185				
Sharp-fruited Rush	<i>Juncus acuminatus</i>	100				
Shasta Daisy	<i>Leucanthemum maximum</i>	201				
Sheep Sorrel	<i>Acetosella vulgaris</i>	43				
Shepherd's Purse	<i>Capsella bursa-pastoris</i>	241				
Shore Pine	<i>Pinus contorta</i>	156				
Shrubby Crassula	<i>Crassula tetragona</i>	102				
Silky Cudweed	<i>Gamochaeta calviceps</i>	175				
Silky Oak	<i>Grevillea robusta</i>	216				
Silvery Hair-grass	<i>Aira caryophylla</i>	124				
Slender Barb-grass	<i>Parapholis strigosa</i>	241				
Slender Bedstraw	<i>Galium divaricatum</i>	122				
Slender Bird's-foot Trefoil	<i>Lotus angustissimus</i>	230				
Slender Celery	<i>Ciclospermum leptophyllum</i>	236				
Slender Centaury	<i>Centaurium tenuiflorum</i>	115				
Slender Cicendia	<i>Cicendia filiformis</i>	133				
Slender Pigeon Grass	<i>Setaria parviflora</i>	176				
Slender Rush	<i>Juncus tenuis</i>	50				
Slender Thistle	<i>Carduus pycnocephalus</i>	97	✓			
Slender Vetch	<i>Vicia tetrasperma</i>	230				
Small Goosegrass	<i>Galium murale</i>	133				
Small Hair-grass	<i>Molineriella minuta</i>	241				
Small Nettle	<i>Urtica urens</i>	241				
Small Piert	<i>Aphanes microcarpa</i>	124				
Small-flower Buttercup	<i>Ranunculus parviflorus</i>	182				
Small-flower Mallow	<i>Malva parviflora</i>	240				
Small-flower Onion-grass	<i>Romulea minutiflora</i>	242				

Appendix 3 Environmental weeds of the Ranges bioregions of Victoria listed by common name

Common Name	Botanical Name	Ranking Score	CALP Act	Vic Alert Weed	National Alert Weed	WONS
Smooth Cat's-ear	<i>Hypochoeris glabra</i>	133				
Smooth Fleabane	<i>Conyza bilbaoana</i>	115				
Smooth Hawksbeard	<i>Crepis capillaris</i>	175				
Snake-tongue Buttercup	<i>Ranunculus ophioglossifolius</i>	185				
Snowberry	<i>Symphoricarpos albus</i>	208				
Soft Brome	<i>Bromus hordeaceus</i>	97				
Soft Rush	<i>Juncus effusus</i>	46				
Sourgrass	<i>Oxalis articulata</i>	93				
Soursob	<i>Oxalis pes-caprae</i>	96	✓			
South African Orchid	<i>Disa bracteata</i>	103				
Southern Mahogany	<i>Eucalyptus botryoides</i>	213				
Southern Plantain	<i>Plantago australis</i>	173				
Sowbane	<i>Chenopodium murale</i>	241				
Spanish Bluebell	<i>Hyacinthoides hispanica</i>	237				
Spanish Heath	<i>Erica lusitanica</i>	11				
Spear Thistle	<i>Cirsium vulgare</i>	115	✓			
Spearmint	<i>Mentha spicata</i>	213				
Spider Plant	<i>Chlorophytum comosum</i>	243				
Spiny Broom	<i>Calicotome spinosa</i>	204	✓			
Spiny Rush	<i>Juncus acutus</i>	52				
Spiny-fruit Rush	<i>Juncus oxycarpus</i>	212				
Spotted Gum	<i>Corymbia maculata</i>	240				
Spotted Medic	<i>Medicago arabica</i>	212				
Sprawling Saltbush	<i>Atriplex suberecta</i>	242				
Spreading Hedge-parsley	<i>Torilis arvensis</i>	227				
Spreading Pearlwort	<i>Sagina procumbens</i>	184				
Spreading Cotoneaster	<i>Cotoneaster divaricatus</i>	10				
Square Cicendia	<i>Cicendia quadrangularis</i>	133				
Squirrel-tail Fescue	<i>Vulpia bromoides</i>	43				
St Barnaby's Thistle	<i>Centaurea solstitialis</i>	208	✓			
St John's Wort	<i>Hypericum perforatum</i>	43	✓			
St Peter's Wort	<i>Hypericum tetrapterum</i>	53	✓			
Stagger Weed	<i>Stachys arvensis</i>	176				
Star Thistle	<i>Centaurea calcitrapa</i>	103	✓			
Sticky Ground-cherry	<i>Physalis viscosa</i>	238	✓			
Sticky Wattle	<i>Acacia howittii</i>	84				
Stink Grass	<i>Eragrostis cilianensis</i>	239				
Stinking Goosefoot	<i>Chenopodium vulvaria</i>	241				
Stinking Iris	<i>Iris foetidissima</i>	211				
Stinking Mayweed	<i>Anthemis cotula</i>	173				
Stinking Roger	<i>Tagetes minuta</i>	212				
Stinkwort	<i>Dittrichia graveolens</i>	241	✓			
Striped Rush-leaf	<i>Sisyrinchium iridifolium</i>	176				
Subterranean Clover	<i>Trifolium subterraneum</i>	216				
Suckling Clover	<i>Trifolium dubium</i>	125				
Swamp Foxtail-grass	<i>Pennisetum alopecuroides</i>	209				
Swan Plant	<i>Gomphocarpus fruticosus</i>	129				
Sweet Briar	<i>Rosa rubiginosa</i>	98	✓			
Sweet Hakea	<i>Hakea drupacea</i>	216				
Sweet Melilot	<i>Melilotus indicus</i>	236				
Sweet Mexican Poppy	<i>Argemone ochroleuca</i>	182				
Sweet Pittosporum	<i>Pittosporum undulatum</i>	10				
Sweet Vernal-grass	<i>Anthoxanthum odoratum</i>	31				
Sweet William	<i>Dianthus barbatus</i>	243				
Sycamore Maple	<i>Acer pseudoplatanus</i>	11				
Taiwan Lily	<i>Lilium formosanum</i>	237				

Appendix 3 Environmental weeds of the Ranges bioregions of Victoria listed by common name

Common Name	Botanical Name	Ranking Score	CALP Act	Vic Alert Weed	National Alert Weed	WONS
Tall Fescue	<i>Festuca arundinacea</i>	104				
Tall Fleabane	<i>Conyza sumatrensis</i>	109				
Tansyleaf Milfoil	<i>Achillea distans</i>	102				
Tarata	<i>Pittosporum eugenioides</i>	155				
Three-part Crassula	<i>Crassula alata</i>	130				
Thyme-leaved Sandwort	<i>Arenaria serpyllifolia</i>	235				
Tiger Pear	<i>Opuntia aurantiaca</i>	75				
Timothy Grass	<i>Phleum pratense</i>	212				
Tiny Vetch	<i>Vicia hirsuta</i>	230				
Tiny-headed Rush	<i>Juncus microcephalus</i>	211				
Toowoomba Canary-grass	<i>Phalaris aquatica</i>	152				
Topped Lavender	<i>Lavandula stoechas</i>	201	✓			
Trailing St John's Wort	<i>Hypericum humifusum</i>	200				
Traveller's Joy	<i>Clematis vitalba</i>	11		✓		
Treacle Mustard	<i>Conringia orientalis</i>	243				
Tree Heath	<i>Erica arborea</i>	93				
Tree Hogweed	<i>Polygonum bellardii</i>	236				
Tree Lucerne	<i>Chamaecytisus palmensis</i>	213				
Tree Lupin	<i>Lupinus arboreus</i>	102				
Tree of Heaven	<i>Ailanthus altissima</i>	102	✓			
Tree Tobacco	<i>Nicotiana glauca</i>	242				
Tricolor Harlequin-flower	<i>Sparaxis tricolor</i>	48				
Tufted Honey-flower	<i>Melianthus comosus</i>	240	✓			
Tutsan	<i>Hypericum androsaemum</i>	118	✓			
Twiggy Mullein	<i>Verbascum virgatum</i>	176				
Twiggy Turnip	<i>Brassica fruticulosa</i>	233				
Variable Flat-sedge	<i>Cyperus difformis</i>	212				
Variable Ixia	<i>Ixia polystachya</i>	210				
Variegated Thistle	<i>Silybum maritimum</i>	213	✓			
Veined Verbena	<i>Verbena rigida</i>	209				
Velvet Cotoneaster	<i>Cotoneaster pannosus</i>	10				
Velvety Pink	<i>Petrorhagia dubia</i>	134				
Viper's Bugloss	<i>Echium vulgare</i>	238	✓			
Wall Brome	<i>Bromus tectorum</i>	238				
Wall Fescue	<i>Vulpia muralis</i>	49				
Wall Fumitory	<i>Fumaria muralis</i>	212				
Wall Speedwell	<i>Veronica arvensis</i>	241				
Wandering Jew	<i>Tradescantia fluminensis</i>	20				
Wandering Speedwell	<i>Veronica peregrina</i>	239				
Water Bent	<i>Polypogon viridis</i>	233				
Watercress	<i>Nasturtium officinale</i>	131				
Weeping Willow	<i>Salix babylonica</i>	23				
Weld	<i>Reseda luteola</i>	239				
Wheel Cactus	<i>Opuntia robusta</i>	156	✓			
White Arctotis	<i>Arctotis stoechadifolia</i>	210				
White Arum-lily	<i>Zantedeschia aethiopica</i>	21				
White Bladder-flower	<i>Araujia sericifera</i>	209				
White Clover	<i>Trifolium repens</i>	41				
White Cudweed	<i>Vellereophyton dealbatum</i>	133				
White Fumitory	<i>Fumaria capreolata</i>	212				
White Kunzea	<i>Kunzea ambigua</i>	186				
White Poplar	<i>Populus alba</i>	156				
White Sallow-wattle	<i>Acacia floribunda</i>	93				
White Spanish Broom	<i>Cytisus multiflorus</i>	203			✓	
White Turnip	<i>Brassica rapa</i>	233				
White Willow	<i>Salix alba</i>	22	✓			✓

Appendix 3 Environmental weeds of the Ranges bioregions of Victoria listed by common name

Common Name	Botanical Name	Ranking Score	CALP Act	Vic Alert Weed	National Alert Weed	WONS
White-edge Nightshade	<i>Solanum marginatum</i>	238				
Whitetip Nightshade	<i>Solanum chenopodioides</i>	91				
Whitlow Grass	<i>Erophila verna</i>	203				
Whitlow Wort	<i>Paronychia brasiliana</i>	237				
Whorled Pigeon-grass	<i>Setaria verticillata</i>	95				
Wild Gladiolus	<i>Gladiolus undulatus</i>	48				
Wild Oat	<i>Avena fatua</i>	214				
Wild Radish	<i>Raphanus raphanistrum</i>	215				
Wild Sage	<i>Salvia verbenaca</i>	241				
Wild Teasel	<i>Dipsacus fullonum</i>	242	✓			
Wild Tobacco Tree	<i>Solanum mauritianum</i>	199				
Willow-leaf Hakea	<i>Hakea salicifolia</i>	201				
Willow-leaf Lettuce	<i>Lactuca saligna</i>	241				
Wimmera Rye-grass	<i>Lolium rigidum</i>	242				
Winged Slender-thistle	<i>Carduus tenuiflorus</i>	97	✓			
Winter Euryops	<i>Euryops abrotanifolius</i>	39				
Winter Heliotrope	<i>Petasites fragrans</i>	92				
Wireweed	<i>Polygonum arenastrum</i>	228				
Wirilda	<i>Acacia retinodes</i>	240				
Wood Bitter-cress	<i>Cardamine flexuosa</i>	238				
Wood Forget-me-not	<i>Myosotis sylvatica</i>	20				
Woolly Clover	<i>Trifolium tomentosum</i>	239				
Woolly Cudweed	<i>Gamochaeta pensylvanica</i>	172				
Yellow Alstroemeria	<i>Alstroemeria aurea</i>	93				
Yellow Bartsia	<i>Parentucellia viscosa</i>	188				
Yellow Hawkweed	<i>Tolpis barbata</i>	175				
Yellow Ixia	<i>Ixia maculata</i>	210				
Yellow-and-blue Forget-me-not	<i>Myosotis discolor</i>	176				
Yellow-flower Devil's-claw	<i>Proboscidea lutea</i>	210				
Yorkshire Fog	<i>Holcus lanatus</i>	52				





www.dse.vic.gov.au