

# Rutherglen Area Native Plant Lists

Including Wahgunyah, Gooramadda, Great Northern, Prentice North

## About this brochure



This brochure provides lists of plant species that are locally native (indigenous) to the **Rutherglen** area (see back page for map).

These species are grouped into lists for different profiles of the landscape/topography, representing the different vegetation types (Ecological Vegetation Classes, EVCs) that occur there. The species in **bold** are those which are more common, and underlined species are those that are more likely to be available from nurseries that sell indigenous plants. The lists are cross-referenced with **EVC benchmarks** (see references).

## Why restore and revegetate?



These activities provide for: shelter for stock, pasture or crops; creating/ enhancing the habitat for native species; improving water quality; land protection; farm forestry (including firewood, sawlogs); meeting legislative requirements (eg. offsets), and aesthetics.

## What do you want to achieve?



The purpose of your works helps dictate the following; *where*, eg. extend existing native vegetation, link between patches, corner of paddock, along drainage line, in gully etc; *how*, eg. planting, direct seeding or natural regeneration; the *on going management* required; *what species* you revegetate with; the *density* (how many plants); and the *arrangement*, eg. rows versus random, shrubs around existing trees.

## Make the most of your efforts!



The long term survival, effective regeneration and other benefits can easily be optimised, whatever the purpose of your efforts. Expanding the range of plant types to include shrubs, grasses and wildflowers helps keep your native trees healthy and provides the building materials, furniture and food needed by local native animals. These improve the chance of restoring plant-animal interactions such as pollination and insect control, assisting your restoration site and surrounding areas to be self-sustaining.

## How do I go about it?



Preparing the ground, undertaking pest and weed control, selection of plants, spacing and arrangement of plants, method of planting, watering in, mulching, guarding, fencing and monitoring are all factors which will vary according to your site and purpose. The book *Revegetation Techniques A guide to establishing native vegetation in Victoria* (2003) Greening Australia is available from the website: [www.greeningaustralia.com.au](http://www.greeningaustralia.com.au)

## Order in advance



To maximise your range of species, order at least 12 months in advance. Nurseries can grow many species if they know you want them. They can also ensure that the seed is local to your site (plants genetically adapted to your conditions survive the best). So plan and order. If you collect your own seed, this can be given to nurseries to grow. Then you can be sure of how local your plants are! A list of nurseries supplying indigenous plants in the NE Region can be found in *Revegetation Resources Directory*, DSE (2005) on the NECMA website: [www.necma.vic.gov.au](http://www.necma.vic.gov.au)

## Choosing the best list for a site



Selecting the appropriate list will ensure that the species are suited to the conditions. Consider: *where* you are in the landscape/ topography (eg. floodplain, flats, rises); the soil type and remnant vegetation near by. Based on this and current site conditions, select the best suited profile/s, using species descriptions as a guide.

## More Information



The following references are available on the DPI & DSE websites ([www.dpi.vic.gov.au](http://www.dpi.vic.gov.au); [www.dse.vic.gov.au](http://www.dse.vic.gov.au)) and at their offices  
**Wodonga** McKoy St (02) 60437900  
**Wangaratta** Cnr Ovens and Ford St (03) 57238600

**General:** DSE (2006) *Native Vegetation Revegetation planting standards - Guidelines for establishing native vegetation for net gain accounting*, DSE, East Melbourne.  
Perry, D and Butler, M. (2004) *Tree planting and aftercare*, LC0104, DPI, Melbourne.

**Biodiversity:** Platt, S. (2002) *How to Plan Wildlife Landscapes*, DNRE, Melbourne.

**Riparian Revegetation:** Price, P. & Lovett, S. (2002) 'Managing riparian land', 1, Land & Water Australia Canberra.

**Farm Forestry:** Hajek, C. (2002) *Farm forestry / agroforestry: What is it?*, AG0790, DPI, Horsham.

**Shelter Belts:** Johnson H. and Brandle, James (2003) *Shelterbelt design*, LC 0136, DPI, Stawell.

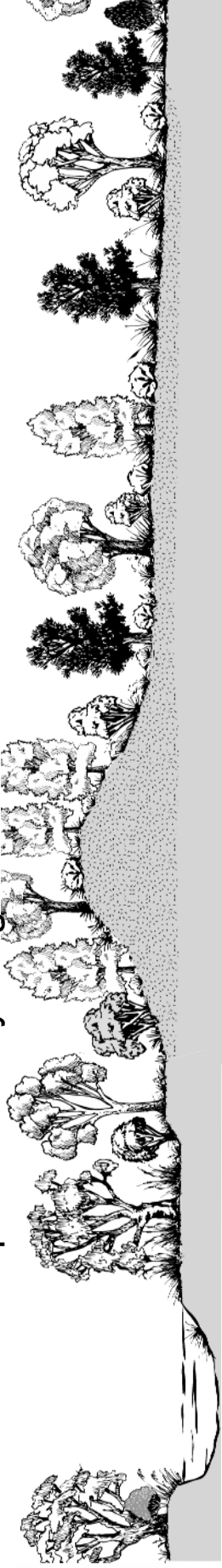
**Salinity:** DPI (2005) *Frequently Asked Question About Salinity Tree Planting Incentive Projects* NESSI

**EVC Descriptions and Benchmarks:** [www.dse.vic.gov.au](http://www.dse.vic.gov.au) under 'Conservation and Environment' go to 'Native Vegetation Information for Victoria'.

DNRE (2002), *Managing Your Patch of Bush*, Wodonga.

**Species Descriptions:** [www.csu.edu.au/herbarium/riverina](http://www.csu.edu.au/herbarium/riverina)

# Rutherglen - Riverine Floodplain - Sandy Ridges/Plains - Plains

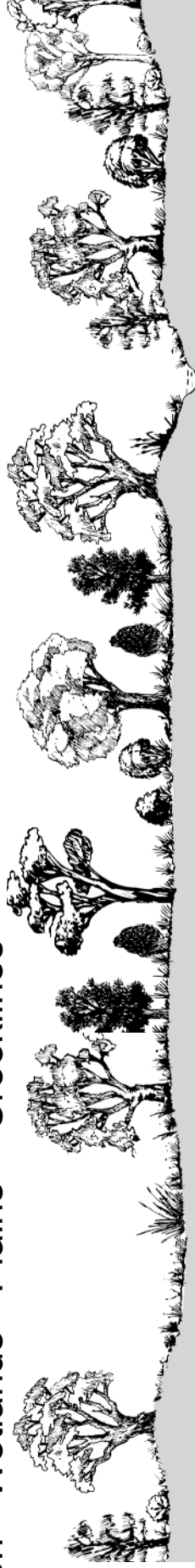


| Landform   | Riverine Floodplain   | Sand Ridges and Sandy Plains  | Plains   |
|--|---|---|--|
| Description  | Active riverine floodplain of lower reaches of large rivers   | Sandy ridges associated with prior streams or active rivers                               | Alluvial plains and gently undulating plains   |
| Geology & Soils  | Alluvial sediments: well drained stony and gravelly soils grading to sandy clay loams and poorly drained silts/ clays | Deep sandy soils formed by sand blown up by wind action from the prior stream bed         | Alluvial sediments: well drained red or brown soils, clay loam to sandy clay loam  |
| EVC  | <b>Riverine Grassy Woodland / Sedgely Riverine Forest</b>   | <b>Sand Ridge Woodland / Shallow Sands Woodland</b>                                       | <b>Plains Woodland</b>   |
| Location Example   | Murray River  | McDonald Rd   | Rutherglen D69 Nature Conservation R've Research St. Ln.   |
| <b>Legend</b>  | <b>Trees &gt; 5m</b>  | <b>Trees &gt; 5m</b>  | <b>Trees &gt; 5m</b>   |
| Underline text = likely to be available from nurseries                 | <u><i>Acacia dealbata</i></u> (UT) <b>Silver Wattle</b>   | <u><i>Acacia implexa</i></u> (UT) <b>Lightwood</b>  | <u><i>Acacia implexa</i></u> (UT) <b>Lightwood</b>   |
| <b>Bold text = more common in EVC</b>                                  | <u><i>Eucalyptus camaldulensis</i></u><br><i>Eucalyptus melliodora</i> <sup>1</sup><br><i>Eucalyptus microcarpa</i>   | <u><i>Callitris glaucophylla</i></u><br><i>Yellow Box</i><br><i>Grey Box</i>              | <u><i>Allocasuarina luehmannii</i></u><br><i>Blakely's Red-gum</i><br><i>River Red-gum</i><br><i>Yellow Box</i><br><i>Grey Box</i> |
| <b>Trees</b>   | <i>Acacia acinacea</i> (MS) <b>Gold-dust Wattle</b>   | <i>Myoporum montanum</i> (UT) <b>Waterbush</b>  | <i>Myoporum montanum</i> (UT) <b>Waterbush</b>   |
| Woody plants (include large shrubs) > 5m (UT) Understorey              | <i>Callistemon sieberi</i> (MS) <b>River Bottlebrush</b>  | <i>Acacia acinacea</i> (MS) <b>Gold-dust Wattle</b>                                       | <i>Acacia acinacea</i> (MS) <b>Gold-dust Wattle</b>  |
| Trees = trees or large shrubs > 5m that do not form part of the canopy | <i>Cassinia aculeata</i> <sup>2</sup> (MS) <b>Common Cassinia</b> <sup>2</sup>  | <i>Acacia pycnantha</i> (MS) <b>Golden Wattle</b>   | <i>Acacia paradoxa</i> (MS) <b>Hedge Wattle</b>  |
|  | <i>Sclerolaena muricata</i> (SS) <b>Dark Roly-poly</b>  | <i>Bursaria spinosa</i> subsp. <b>spinosa</b>   | <i>Acacia pycnantha</i> (MS) <b>Golden Wattle</b>  |
|  | <b>Groundcovers</b>   | <i>Cassinia aculeata</i> <sup>2</sup> (MS) <b>Common Cassinia</b> <sup>2</sup>            | <i>Bursaria spinosa</i> subsp. <b>spinosa</b> (MS) <b>Sweet Bursaria</b>   |
|  | <i>Alternanthera denticulata</i> (MH) <b>Lesser Joyweed</b>   | <i>Dodonaea viscosa</i> subsp. <b>angustissima</b> (MS) <b>Narrow-leaf Hop-bush</b>       | <i>Bursaria spinosa</i> subsp. <b>spinosa</b> (MS) <b>Sweet Bursaria</b>   |
|  | <i>Amphibromus nervosus</i> (L) <b>Common Swamp Wallaby-grass</b>   | <i>Pimelea curviflora</i> (SS) <b>Curved Rice-flower</b>                                  | <i>Cassinia aculeata</i> <sup>2</sup> (MS) <b>Common Cassinia</b> <sup>2</sup>   |
|  | <i>Austrodanthonia duttoniana</i> (M) <b>Brown-back Wallaby-grass</b>   | <i>Pittosporum angustifolium</i> (MS) <b>Weeping Pittosporum</b>                          | <i>Dillwynia cinerascens</i> (SS) <b>Grey Parrot-pea</b>   |
| <b>Shrubs</b>  | <i>Azolla filliculoides</i> (SH) <b>Pacific Azolla</b>  | <b>Groundcovers</b>   | <i>Dodonaea viscosa</i> (MS) <b>Sticky Hop-bush</b>  |
| (MS) Medium 1-5m   | <i>Calotris scapigera</i> (MH) <b>Tufted Burr-daisy</b>   | <i>Aristida behriana</i> (M) <b>Brush Wire-grass</b>                                      | <i>Eutaxia microphylla</i> (SS) <b>Common Eutaxia</b>  |
| (SS) Small 20cm-1m   | <i>Carex appressa</i> (L) <b>Tall Sedge</b>   | <i>Arthropodium strictum</i> (LH) <b>Chocolate Lily</b>                                   | <i>Pimelea curviflora</i> (SS) <b>Curved Rice-flower</b>   |
| (PS) Prostrate <50cm   | <i>Carex bichenoviana</i> (M) <b>Plains Sedge</b>   | <i>Austrodanthonia eriantha</i> (M) <b>Hill Wallaby-grass</b>                             | <i>Pittosporum angustifolium</i> (MS) <b>Weeping Pittosporum</b>   |
| <b>Groundcovers</b>  | <i>Carex tereticaulis</i> (L) <b>Poong'ort</b>  | <i>Chenopodium desertorum</i> subsp. <b>microphyllum</b> (SH) <b>Small-leaf Goosefoot</b> |  |
| (L) Large grass-like plant > 1m  | <i>Eleocharis sphacelata</i> (L) <b>Tall Spike-sedge</b>  | <i>Chloris truncata</i> (M) <b>Windmill Grass</b>   | <i>Aristida behriana</i> (M) <b>Brush Wire-grass</b>   |
| (M) Medium grass-like plant 10cm-1m                                    | <i>Enteropogon acicularis</i> (M) <b>Spider Grass</b>   | <i>Chrysocephalum apiculatum</i> (LH) <b>Common Everlasting</b>                           | <i>Arthropodium strictum</i> (LH) <b>Chocolate Lily</b>  |
| (T) Tiny grass-like plant <10cm  | <i>Eragrostis brownii</i> (M) <b>Common Love-grass</b>  | <i>Dianella longifolia</i> (M) <b>Pale Flax-lily</b>                                      | <i>Austrodanthonia auriculata</i> (M) <b>Common Wallaby-grass</b>  |
| (LH) Large herb>50cm (MH) Medium herb 5-20cm                           | <i>Eragrostis diandra</i> (M) <b>Close-headed Love-grass</b>  | <i>Einaidia hastata</i> (MH) <b>Saloop</b>  | <i>Austrodanthonia caespitosa</i> (M) <b>Common Wallaby-grass</b>  |
| (SH) Small or prostrate herb < 5cm                                     | <i>Eulalia aurea</i> (M) <b>Silky Brown-top</b>   | <i>Elymus nutans</i> (MH) <b>Nodding Saltbush</b>   | <i>Austrodanthonia carphoides</i> (M) <b>Short Wallaby-grass</b>   |
| (GF) Ground Fern   | <i>Helichrysum rutidolepis</i> (MH) <b>Pale Everlasting</b>   | <i>Elymus scaber</i> (M) <b>Common Wheat-grass</b>  | <i>Austrostipa aristigulmis</i> (L) <b>Pump Spear-grass</b>  |
| (SC) Scrambler/climber   | <i>Juncus amabilis</i> (M) <b>Hollow Rush</b>   | <i>Erneapogon nigricans</i> (M) <b>Nigger-heads</b>                                       | <i>Chrysocephalum apiculatum</i> (LH) <b>Common Everlasting</b>  |
|  | <i>Juncus aridicola</i> (L) <b>Tussock Rush</b>   | <i>Geranium solanderi</i> (MH) <b>Austral Cranesbill</b>                                  | <i>Dianella revoluta</i> (M) <b>Black-anther Flax-lily</b>   |
|  | <i>Juncus ingens</i> (L) <b>Giant Rush</b>  | <i>Glycine tabacina</i> (SC) <b>Variable Glycine</b>                                      | <i>Einedia hastata</i> (MH) <b>Saloop</b>  |
|  | <i>Ludwigia peploides</i> (SH) <b>Clove-strip</b>   | <i>Lomandra filiformis</i> (M) <b>Wattle Mat-rush</b>                                     | <i>Elymus scaber</i> (M) <b>Common Wheat-grass</b>   |
|  | <i>Myriophyllum crispatum</i> (LH) <b>Upright Water-milfoil</b>   | <i>Lomandra multiflora</i> (M) <b>Many-flowered Mat-rush</b>                              | <i>Eryngium ovinum</i> (LH) <b>Blue Devil</b>  |
|  | <i>Persicaria prostrata</i> (MH) <b>Creeping Knotweed</b>   | <i>Maireana enchylaenoides</i> (MH) <b>Wingless Bluebush</b>                              | <i>Common Wheat-grass</i>  |
|  | <i>Phragmites australis</i> (L) <b>Common Reed</b>  | <i>Panicum effusum</i> (L) <b>Hairy Panic</b>   | <i>Blue Devil</i>  |
|  | <i>Poa labillardierei</i> (M) <b>Common Tussock-grass</b>   | <i>Sida corrugata</i> (MH) <b>Variable Sida</b>   | <i>Austral Cranesbill</i>  |
|  | <i>Pseudoraphis spinescens</i> (M) <b>Spiny Mud-grass</b>   | <i>Vittadinia gracilis</i> (MH) <b>Fuzzy New Holland Daisy</b>                            | <i>Wattle Mat-rush</i>   |
|  | <i>Ranunculus inundatus</i> (MH) <b>River Buttercup</b>   |   | <i>Maireana enchylaenoides</i> (MH) <b>Wingless Bluebush</b>   |

<sup>1</sup> Sandy, well-drained soils

<sup>2</sup> Potential to spread rapidly

# Rutherglen - Wetlands - Plains - Creeklines



| Landform   | Wetlands  | Plains  | Creeklines / Drainage lines  |
|--|---|---|--|
| Landform Description   | Drainage depression or swamp; billabongs with standing water; soaks; ephemeral wetlands | Alluvial plains and gently undulating plains                                      | Low-gradient ephemeral (seasonal) to intermittent drainage lines on plains and lower slopes of foothills |
| Geology & Soils  | Alluvial sediments; poorly drained grey or black cracking clays                         | Alluvial sediments: well drained red or brown soils, clay loam to sandy clay loam | Alluvial sediments: sands, clays and silts   |
| <b>EVC</b>   | <b>Wetland Complex</b>  | <b>Plains Woodland</b>  | <b>Creeklines Grassy Woodland</b>  |
| Location Example   | Black Swamp   | Rutherglen D69 Nature Conservation R've Research St. Ln.                          | Black Dog Creek  |
| Legend   | <b>Trees &gt; 5m</b>  | <b>Trees &gt; 5m</b>  | <b>Trees &gt; 5m</b>   |
| Underline text = likely to be available from nurseries                 | <u>Eucalyptus camaldulensis</u> River Red-gum   | <u>Acacia implexa</u> (UT) Lightwood  | <u>Acacia dealbata</u> (UT) Silver Wattle  |
| <b>Bold text = more common in EVC</b>                                  | <b>Edge of Wetland - in soil that dries out</b>   | <b>Buloke</b>   | <u>Acacia implexa</u> (UT) Lightwood   |
|  | <u>Alternanthera denticulata</u> (MH) Lesser Jovweed                                    | <u>Blakely's Red-gum</u>  | <u>Eucalyptus camaldulensis</u> River Red-gum  |
|  | <u>Amphibromus nervosus</u> (L) Common Swamp Wallaby-grass                              | <u>River Red-gum</u>  | <u>Eucalyptus melliodora</u> <sup>1</sup> Yellow Box   |
|  | <u>Austrodanthonia duttoniana</u> (M) Brown-back Wallaby-grass                          | <u>Yellow Box</u>   | <u>Eucalyptus microcarpa</u> Grey Box  |
|  | <u>Calotis scapigera</u> (MH) Tufted Burr-daisy   | <b>Grey Box</b>   | <b>Shrubs</b>  |
|  | <u>Carex tereticaulis</u> (L) Poongort  | <u>Waterbush</u>  | <u>Acacia acinacea</u> (MS) Gold-dust Wattle   |
| Woody plants (include large shrubs) > 5m                               | <u>Centipeda minima</u> subsp. <i>minima</i> (MH) Spreading Sneezeweed                  | <b>Shrubs</b>   | <u>Acacia paradoxa</u> (MS) Hedge Wattle   |
| (UT) Understorey   | <u>Drosera peltata</u> (MH) Pale Sundew   | <u>Gold-dust Wattle</u>   | <u>Acacia pycnantha</u> (MS) Golden Wattle   |
| Trees = trees or large shrubs > 5m that do not form part of the canopy | <u>Eriopogon acicularis</u> (M) Spider Grass  | <u>Hedge Wattle</u>   | <u>Bursaria spinosa</u> subsp. <i>spinosa</i> (MS) Sweet Bursaria  |
|  | <u>Eragrostis brownii</u> (M) Common Love-grass   | <b>Golden Wattle</b>  | <u>Callistemon sieberi</u> (MS) River Bottlebrush  |
|  | <u>Eulalia aurea</u> (M) Silky Browntop   | (MS) Sweet Bursaria   | <u>Cassinia aculeata</u> <sup>2</sup> (MS) Common Cassinia   |
|  | <u>Juncus amabilis</u> (M) Hollow Rush  | <u>Common Cassinia</u>  | <u>Dillwynia cinerascens</u> (SS) Grey Parrot-pea  |
|  | <u>Juncus aridicola</u> (L) Tussock Rush  | <u>Grey Parrot-pea</u>  | <u>Eutaxia microphylla</u> (SS) Curved Rice-flower   |
|  | <u>Juncus bufonius</u> (M) Toad Rush  | <u>Sticky Hop-bush</u>  | <u>Pimelea curviflora</u> (SS) Curved Rice-flower  |
| <b>Shrubs</b>  | <u>Juncus flavidus</u> (L) Gold Rush  | <b>Common Eutaxia</b>   | <b>Groundcovers</b>  |
| (MS) Medium 1-5m   | <u>Juncus gregiflorus</u> (L) Green Rush  | <u>Curved Rice-flower</u>   | <u>Aristida behriana</u> (M) Brush Wire-grass  |
| (SS) Small 20cm-1m   | <u>Juncus sarophorus</u> (L) Broom Rush   | <u>Weeping Pittosporum</u>  | <u>Austrodanthonia caespitosa</u> (M) Common Wallaby-grass   |
| (PS) Prostrate <50cm   | <u>Ludwigia peploides</u> (SH) Clove-strip  |   | <u>Austrostipa gibbosa</u> (L) Brown-back Wallaby-grass  |
| <b>Groundcovers</b>  | <u>Persicaria prostrata</u> (MH) Creeping Knotweed                                      |   | <u>Carex appressa</u> (L) Spurred Spear-grass  |
| (L) Large grass-like plant > 1m  | <u>Poa labillardierei</u> (M) Common Tussock-grass                                      |   | <b>Tall Sedge</b>  |
| (M) Medium grass-like plant 10cm-1m                                    | <u>Rumex brownii</u> (MH) Slender Dock  |   | <u>Cyperus exaltatus</u> (L) Tall Flat-sedge   |
| (T) Tiny grass-like plant <10cm  | <b>Emergent - roots in soil, leaves project above water</b>                             |   | <u>Dianella revoluta</u> (M) Black-anther Flax-lily  |
| (LH) Large herb>50cm   | <u>Callitriche sonderi</u> (SH) Matted Water-starwort                                   |   | <u>Eleocharis gracilis</u> (M) Slender Spike-sedge   |
| (MH) Medium herb 5-20cm  | <u>Eleocharis acuta</u> (M) Common Spike-sedge  |   | <u>Elymus scaber</u> (M) Common Wheat-grass  |
| (SH) Small or prostrate herb < 5cm                                     | <u>Eleocharis gracilis</u> (M) Slender Spike-sedge                                      |   | <u>Juncus amabilis</u> (M) Spider Grass  |
| (GF) Ground Fern   | <u>Eleocharis pusilla</u> (M) Small Spike-sedge   |   | <b>Hollow Rush</b>   |
| (SC) Scrambler/climber   | <u>Eleocharis sphacelata</u> (L) Tall Spike-sedge                                       |   | <u>Lomandra filiformis</u> (M) Wattle Mat-rush   |
|  | <u>Juncus ingens</u> (L) Giant Rush   |   | <b>Weeping Grass</b>   |
|  | <u>Myriophyllum crispatum</u> (LH) Upright Water-milfoil                                |   | <u>Persicaria prostrata</u> (MH) Creeping Knotweed   |
|  | <u>Pseudoraphis spinescens</u> (M) Spiny Mud-grass                                      |   | <u>Common Reed</u>   |
|  | <u>Triglochin procerum</u> (L) Common Water-ribbons                                     |   | <u>Common Tussock-grass</u>  |
|  | <u>Typha orientalis</u> (LH) Broad-leaf Cumbungi  |   | <u>Grey Tussock-grass</u>  |
|  | <b>Floating</b>   |   | <b>Kangaroo Grass</b>  |
|  | <u>Marsilea drummondii</u> (MH) Common Nardoo   |   | <u>Typha orientalis</u> (LH) Broad-leaf Cumbungi   |

<sup>1</sup> Sandy, well-drained soils

<sup>2</sup> Potential to spread rapidly

# Rutherglen - Plains - Low Hills and Lower Slopes - Dry Hill Tops

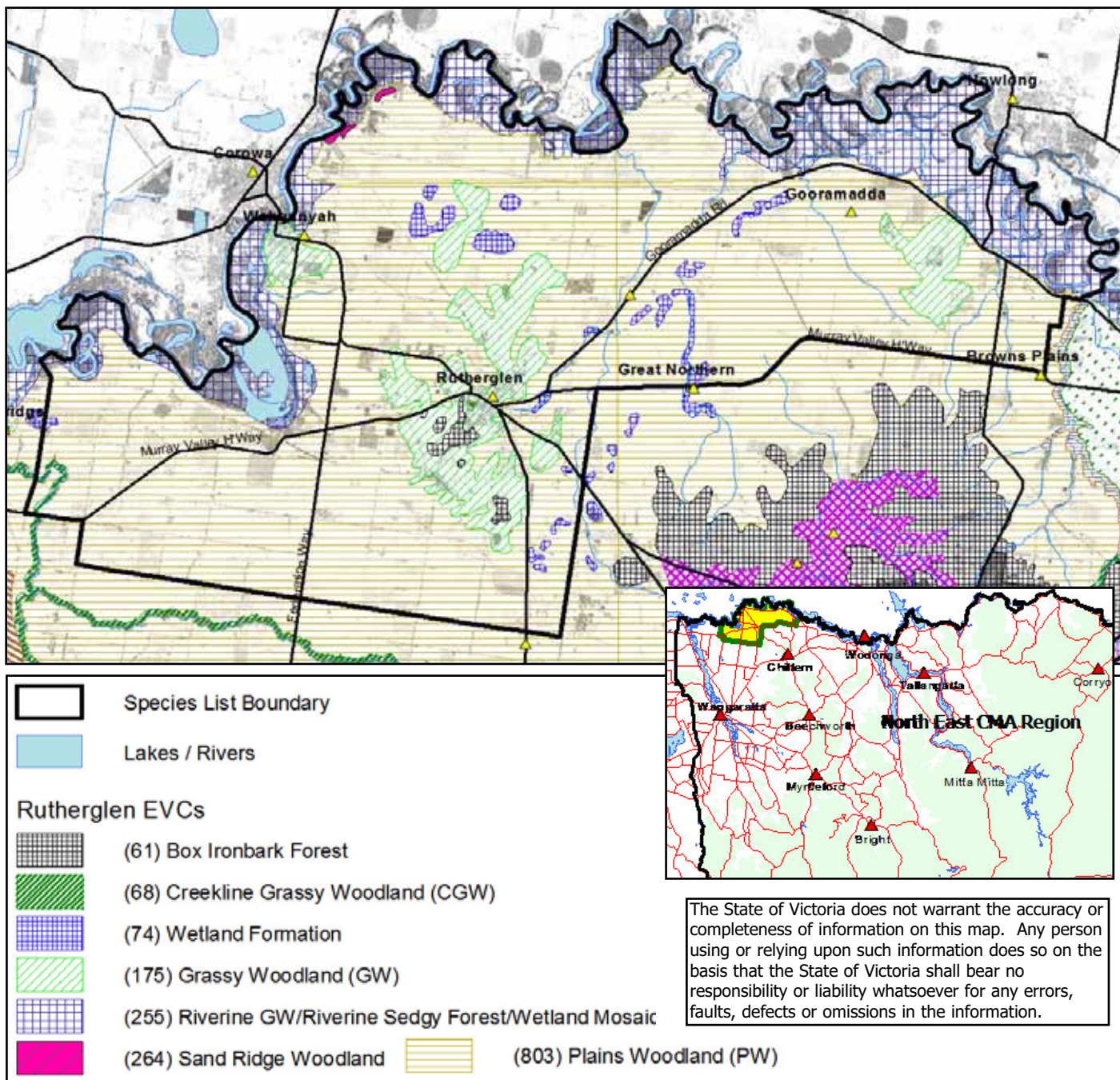


| Landform  | Plains  | Low Hills and Lower Slopes  | Dry Hill Tops   |
|---|---|---|---|
| Description   | Alluvial plains and gently undulating plains  | Lower slopes of stony sedimentary hills, low hills of plains  | Upper Slopes of Low hills on plains   |
| Geology & Soils   | Alluvial sediments: well drained red or brown soils, clay loam to sandy clay loam   | Sedimentary colluvium: deeper than skeletal soils upslope   | Sedimentary colluvium: skeletal sandy loam to clay loams, often gravelly  |
| <b>EVC</b>  | <b>Plains Woodland</b>  | <b>Grassy Woodland (Low Rises or Rainshadow)</b>  | <b>Box Ironbark Forest (in this area without Ironbarks)</b>   |
| Location Example  | Rutherglen D69 Nature Conservation Reserve Research St. Ln.   | Low slopes of Lilliput 118 B.R., Rutherglen Racecourse R've   | Top of Lilliput 118 Bushland Reserve  |
| Legend  | <b>Trees &gt; 5m</b>  | <b>Trees &gt; 5m</b>  | <b>Trees &gt; 5m</b>  |
| Underline text = likely to be available from nurseries  | <u>Acacia implexa</u> (UT)<br><u>Allocasuarina luehmanni</u><br><u>Eucalyptus blakelyi</u><br><u>Eucalyptus camaldulensis</u><br><u>Eucalyptus melliodora</u><br><u>Eucalyptus microcarpa</u><br><u>Myoporum montanum</u> (UT)  | <u>Acacia implexa</u> (UT)<br><u>Eucalyptus albens</u><br><u>Eucalyptus blakelyi</u><br><u>Eucalyptus melliodora</u><br><u>Eucalyptus microcarpa</u><br><u>Eucalyptus polyanthemus</u>  | <u>Callitris endlicheri</u><br><u>Eucalyptus albens</u><br><u>Eucalyptus blakelyi</u><br><u>Eucalyptus microcarpa</u><br><u>Eucalyptus polyanthemus</u>   |
| <b>Bold text = more common in EVC</b>   | <b>Buloke</b><br>River Red-gum<br>Grey Box  | White Box<br>Blakely's Red-gum<br>Yellow Box<br>Grey Box  | Black Cypress-pine<br>White Box<br>Blakely's Red-gum<br>Grey Box<br>Red Box   |
| Trees   | <b>Shrubs</b><br><u>Acacia acinacea</u> (MS)<br><u>Acacia paradoxa</u> (MS)<br><u>Acacia pycnantha</u> (MS)<br><u>Bursaria spinosa subsp. spinosa</u><br><u>Cassinia aculeata</u> ?(MS)<br><u>Dillwynia cinerascens</u> (SS)<br><u>Dodonaea viscosa</u> (MS)<br><u>Eutaxia microphylla</u> (SS)<br><u>Pimelea curviflora</u> (SS)<br><u>Pittosporum angustifolium</u> (MS)  | <b>Shrubs</b><br><u>Acacia acinacea</u> (MS)<br><u>Acacia paradoxa</u> (MS)<br><u>Acacia pycnantha</u> (MS)<br><u>Acacia verniciflua</u> (MS)<br><u>Bursaria spinosa subsp. spinosa</u><br><u>Cassinia aculeata</u> ?(MS)<br><u>Dillwynia cinerascens</u> (SS)<br><u>Dillwynia sericea</u> (SS)<br><u>Pimelea humilis</u> (SS)<br><u>Pultenaea largiflorens</u> (SS)  | <b>Shrubs</b><br><u>Acacia acinacea</u> (MS)<br><u>Acacia paradoxa</u> (MS)<br><u>Acacia pycnantha</u> (MS)<br><u>Acacia verniciflua</u> (MS)<br><u>Cassinia aculeata</u> ?(MS)<br><u>Dillwynia sericea</u> (SS)<br><u>Pultenaea largiflorens</u> (SS)<br><u>Pultenaea laxiflora</u> (SS)<br><u>Pultenaea prostrata</u> (SS)  |
| Woody plants (include large shrubs) > 5m (UT) Understorey Trees = trees or large shrubs > 5m that do not form part of the canopy  | Lightwood<br><b>Buloke</b><br>Blakely's Red-gum<br>River Red-gum<br>Grey Box<br>Waterbush   | Lightwood<br><b>White Box</b><br>Blakely's Red-gum<br>Yellow Box<br>Grey Box  | Black Cypress-pine<br>White Box<br>Blakely's Red-gum<br>Grey Box<br>Red Box   |
| Shrubs  | <b>Gold-dust Wattle</b><br>Hedge Wattle<br><b>Golden Wattle</b><br>(MS) <b>Sweet Bursaria</b><br>Common Cassinia ?<br><b>Grey Parrot-pea</b><br>Sticky Hop-bush<br>Common <b>Eutaxia</b><br>Curved Rice-flower<br>Weeping Pittosporum   | <b>Gold-dust Wattle</b><br><b>Hedge Wattle</b><br><b>Yarnish Wattle</b><br>(MS) <b>Sweet Bursaria</b><br>Grey Parrot-pea<br>Showy Parrot-pea<br>Common Rice-flower<br>Twiggy Bush-pea   | <b>Gold-dust Wattle</b><br>Hedge Wattle<br><b>Golden Wattle</b><br>Yarnish Wattle<br>Common Cassinia ?<br>Showy Parrot-pea<br>Twiggy Bush-pea<br>Loose-flower Bush-pea<br>Silky Bush-pea  |
| (MS) Medium 1-5m (SS) Small 20cm-1m (PS) Prostrate <50cm  | <b>Groundcovers</b><br><u>Aristida behriana</u> (M)<br><u>Arthropodium strictum</u> (LH)<br><u>Austrodanthonia auriculata</u> (M)<br><u>Austrodanthonia caespitosa</u> (M)<br><u>Austrodanthonia carphoides</u> (M)<br><u>Austrostipa aristiglumis</u> (L)<br><u>Chysocephalum apiculatum</u> (LH)<br><u>Dianella revoluta</u> (M)<br><u>Einadia hastata</u> (MH)<br><u>Elymus scaber</u> (M)<br><u>Eryngium ovinum</u> (LH)<br>Geranium solanderi (MH)<br><u>Lomandra filiformis</u> (M)<br><u>Maireana encyphaenoides</u> (MH)<br><u>Themeda triandra</u> (M)<br><u>Vittadinia cuneata</u> (MH) | <b>Groundcovers</b><br><u>Arthropodium strictum</u> (LH)<br><u>Austrodanthonia caespitosa</u> (M)<br><u>Austrodanthonia eriantha</u> (M)<br><u>Austrodanthonia setacea</u> (M)<br><u>Austrostipa scabra</u> (M)<br><u>Cheilanthes austrotenuifolia</u> (GF)<br><u>Dianella revoluta</u> (M)<br><u>Einadia hastata</u> (MH)<br><u>Elymus scaber</u> (M)<br>Goodenia hederacea (MH)<br><u>Hardenbergia violacea</u> (SC)<br><u>Joycea pallida</u> (L)<br><u>Lomandra filiformis</u> (M)<br><u>Poa sieberiana</u> (M)<br><u>Senecio tenuiflorus</u> (LH)<br><u>Wahlenbergia luteola</u> (LH)<br><b>Xerochrysum bracteatum</b> (LH) | <b>Groundcovers</b><br><u>Arthropodium strictum</u> (LH)<br><u>Austrodanthonia caespitosa</u> (M)<br><u>Austrodanthonia eriantha</u> (M)<br><u>Austrodanthonia setacea</u> (M)<br><u>Austrostipa scabra</u> (M)<br><u>Cheilanthes austrotenuifolia</u> (GF)<br><u>Dianella revoluta</u> (M)<br><u>Einadia hastata</u> (MH)<br><u>Elymus scaber</u> (M)<br>Goodenia hederacea (MH)<br><u>Hardenbergia violacea</u> (SC)<br><u>Joycea pallida</u> (L)<br><u>Lomandra filiformis</u> (M)<br><u>Poa sieberiana</u> (M)<br><u>Senecio tenuiflorus</u> (LH)<br><u>Wahlenbergia luteola</u> (LH)<br><b>Xerochrysum bracteatum</b> (LH) |
| Groundcovers  | <b>Brush Wire-grass</b><br>Chocolate Lily<br><b>Common Wallaby-grass</b><br><b>Hill Wallaby-grass</b><br>Rough Spear-grass<br>Red-leg Grass<br>Blue Pincushion<br><b>Lemon Beauty-heads</b><br>Green Rock-fern<br>Pink Bindweed<br>Pale Flax-lily<br>Nodding Saltbush<br><b>Common Wheat-grass</b><br>Blue Devil<br><u>Eryngium ovinum</u> (LH)<br>Geranium solanderi (MH)<br><u>Lomandra filiformis</u> (M)<br><u>Poa sieberiana</u> (M)<br><b>Themeda triandra</b> (M)<br><u>Vittadinia cuneata</u> (MH)  | <b>Brush Wire-grass</b><br>Chocolate Lily<br><b>Common Wallaby-grass</b><br><b>Hill Wallaby-grass</b><br>Rough Spear-grass<br>Red-leg Grass<br>Blue Pincushion<br><b>Lemon Beauty-heads</b><br>Green Rock-fern<br>Pink Bindweed<br>Pale Flax-lily<br>Nodding Saltbush<br><b>Common Wheat-grass</b><br>Blue Devil<br>Austral Cranesbill<br>Wattle Mat-rush<br>Wingless Bluebush<br>Kangaroo Grass<br>Fuzzy New Holland Daisy   | <b>Chocolate Lily</b><br>Common Wallaby-grass<br>Hill Wallaby-grass<br>Bristly Wallaby-grass<br>Rough Spear-grass<br>Green Rock-fern<br><b>Black-anther Flax-lily</b><br>Saloop<br>Common Wheat-grass<br>Ivy Goodenia<br>Purple Coral-pea<br>Silvertop Wallaby-grass<br><u>Wattle Mat-rush</u><br><u>Grey Tussock-grass</u><br>Slender Fireweed<br>Bronze Bluebell<br><b>Golden Everlasting</b>   |
| (L) Large grass-like plant >1m (M) Medium grass-like plant 10cm-1m (T) Tiny grass-like plant <10cm (LH) Large herb >50cm (MH) Medium herb 5-20cm (SH) Small or prostrate herb < 5cm (GF) Ground Fern (SC) Scrambler/climber | <b>Groundcovers</b><br><u>Aristida behriana</u> (M)<br><u>Arthropodium strictum</u> (LH)<br><u>Austrodanthonia auriculata</u> (M)<br><u>Austrodanthonia caespitosa</u> (M)<br><u>Austrodanthonia carphoides</u> (M)<br><u>Austrostipa aristiglumis</u> (L)<br><u>Chysocephalum apiculatum</u> (LH)<br><u>Dianella revoluta</u> (M)<br><u>Einadia hastata</u> (MH)<br><u>Elymus scaber</u> (M)<br><u>Eryngium ovinum</u> (LH)<br>Geranium solanderi (MH)<br><u>Lomandra filiformis</u> (M)<br><u>Maireana encyphaenoides</u> (MH)<br><u>Themeda triandra</u> (M)<br><u>Vittadinia cuneata</u> (MH) | <b>Groundcovers</b><br><u>Arthropodium strictum</u> (LH)<br><u>Austrodanthonia caespitosa</u> (M)<br><u>Austrodanthonia eriantha</u> (M)<br><u>Austrodanthonia setacea</u> (M)<br><u>Austrostipa scabra</u> (M)<br><u>Cheilanthes austrotenuifolia</u> (GF)<br><u>Dianella revoluta</u> (M)<br><u>Einadia hastata</u> (MH)<br><u>Elymus scaber</u> (M)<br>Goodenia hederacea (MH)<br><u>Hardenbergia violacea</u> (SC)<br><u>Joycea pallida</u> (L)<br><u>Lomandra filiformis</u> (M)<br><u>Poa sieberiana</u> (M)<br><u>Senecio tenuiflorus</u> (LH)<br><u>Wahlenbergia luteola</u> (LH)<br><b>Xerochrysum bracteatum</b> (LH) | <b>Groundcovers</b><br><u>Arthropodium strictum</u> (LH)<br><u>Austrodanthonia caespitosa</u> (M)<br><u>Austrodanthonia eriantha</u> (M)<br><u>Austrodanthonia setacea</u> (M)<br><u>Austrostipa scabra</u> (M)<br><u>Cheilanthes austrotenuifolia</u> (GF)<br><u>Dianella revoluta</u> (M)<br><u>Einadia hastata</u> (MH)<br><u>Elymus scaber</u> (M)<br>Goodenia hederacea (MH)<br><u>Hardenbergia violacea</u> (SC)<br><u>Joycea pallida</u> (L)<br><u>Lomandra filiformis</u> (M)<br><u>Poa sieberiana</u> (M)<br><u>Senecio tenuiflorus</u> (LH)<br><u>Wahlenbergia luteola</u> (LH)<br><b>Xerochrysum bracteatum</b> (LH) |

<sup>1</sup> Sandy, well-drained soils

<sup>2</sup> Potential to spread rapidly





**Figure 1. Map of the 'Rutherglen Area' zone.** This satellite image has an overlay of the mapped distribution of the Ecological Vegetation Classes for this zone. The mapping should only be used as an *indication* of which EVCs *may* occur there. To decide which EVCs relate to your property, use the Landform Descriptions and Geology & Soils information in the profiles. To view and print an EVC map for your area see the DSE website ([www.dse.vic.gov.au](http://www.dse.vic.gov.au)) Select 'Interactive Maps' then 'Biodiversity Interactive Map' and choose the appropriate layers.

#### References:

Berwick, S. (unpublished) *Pre-1750 EVC mapping, Goulburn Broken catchment*, Department of Natural Resources and Environment, Benalla.  
 Viridans Pty Ltd. (2004) *Victorian Fauna Display*, Viridans Pty Ltd., Melbourne.  
 Whyte, S. (2003) *Revegetation Techniques A guide for establishing native vegetation in Victoria*, Greening Australia, Horsham.

#### Acknowledgments:



Australian Government

This project has been co-funded by DSE and Natural Heritage Trust. Our thanks to community and organisational members who have assisted with comments.

Profile drawings created by Vincent Drane of Spring Creek Studio.

Edited by Mary Titcumb and Sue Berwick, Department of Sustainability and Environment

Published by the Victorian Government Department of Sustainability and Environment Melbourne, July 2007

© The State of Victoria Department of Sustainability and Environment 2007

This publication is copyright. No part may be reproduced by any process except in accordance with the provisions of the Copyright Act 1968.

Authorised by the Victorian Government, Melbourne. Printed by Stream Solutions.

For further information about this publication, contact: Department of Sustainability and Environment, Wodonga (02) 6043 7900

ISBN 978-1-74152-874-9 (print); ISBN 978-1-74152-880-0 (online); ISBN 978-1-74152-999-9 (CD-ROM)

#### Disclaimer

This publication may be of assistance to you but the State of Victoria and its employees do not guarantee that the publication is without flaw of any kind or is wholly appropriate for your particular purposes and therefore disclaims all liability for any error, loss or other consequence which may arise from you relying on any information in this publication.