

Appendix M

Vibrating Wire Piezometer Installation details



Job Portland Wade Street Slip

Design BY

Office Melbourne

Date 12/6/08

Job No. 2124301B

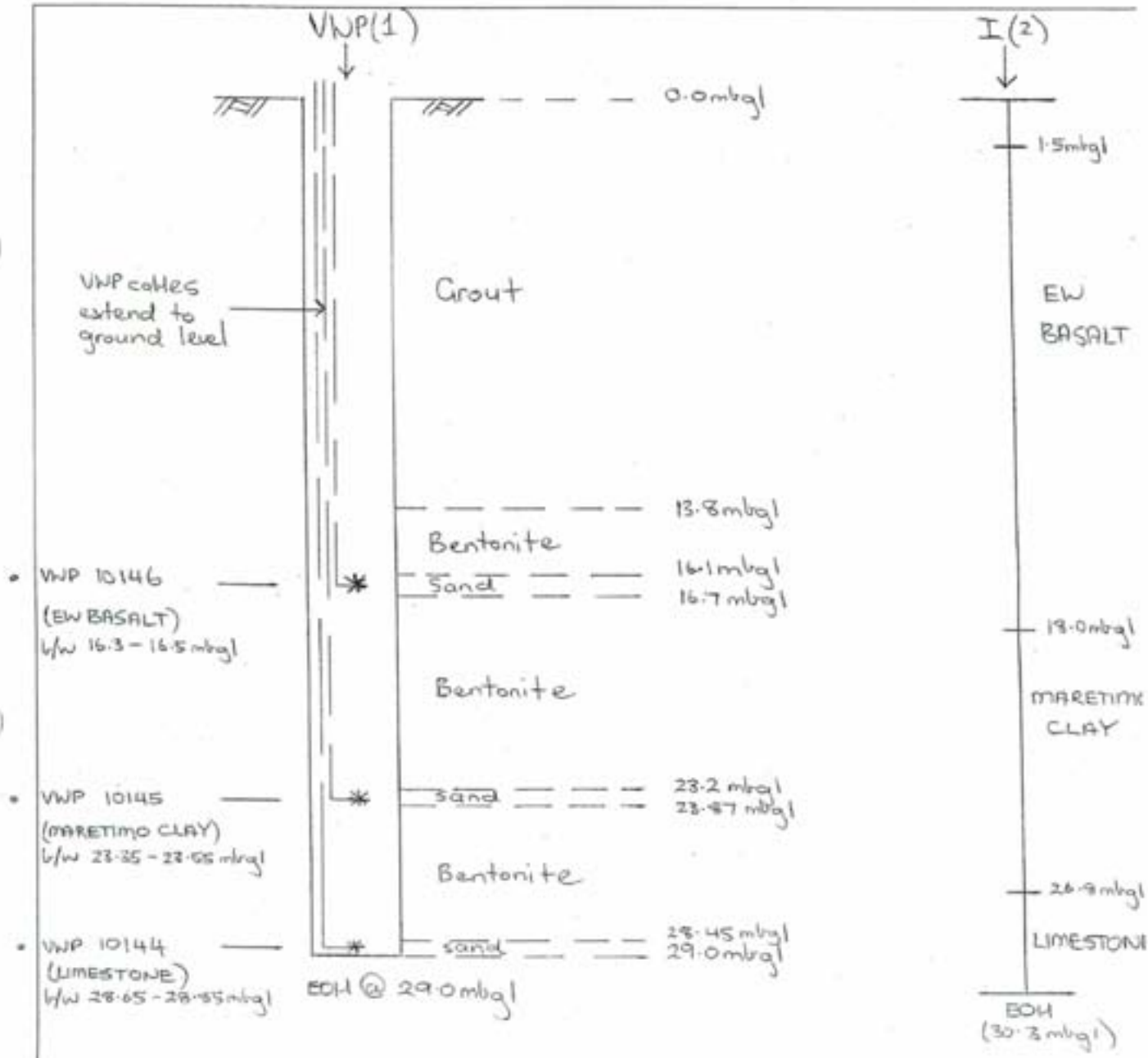
VWP(1) Installation Details

Checked PD

Page No. Appendix M-1

Date 7/10/08

Vertical Scale ; 1:200



Legend

- VWP - Vibrating Wire Piezometer
- EW - Extremely Weathered
- EOH - End of Borehole
- mbgl - metres below ground level
- I - Inclinometer
- * - Installed VWP Unit
- b/w - between

Job Portland Wade Street Slip

Design BY

Office Melbourne

Date 12/6/08

Job No. 2124301 B

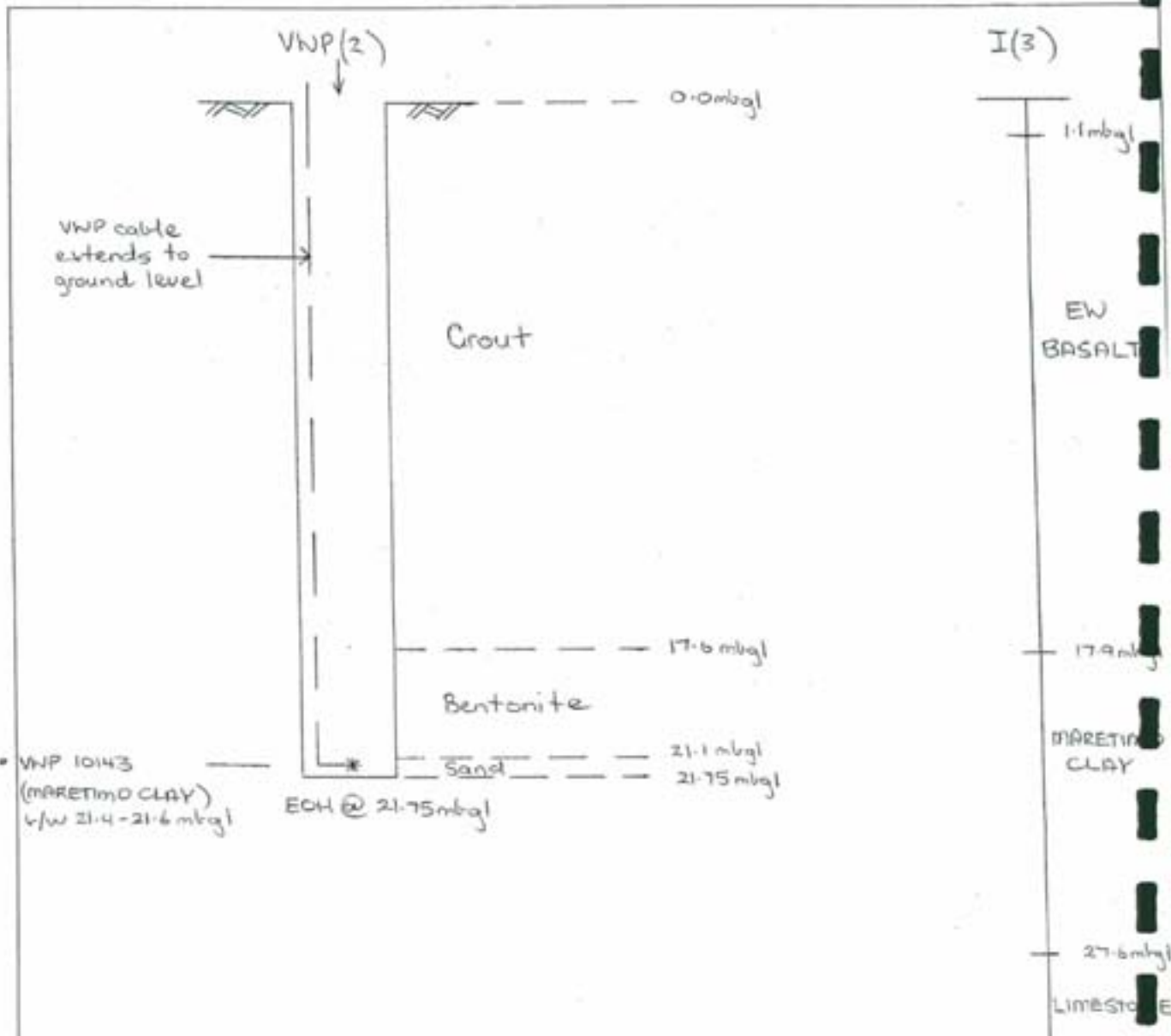
VWP(2) Installation Details

Checked PD

Page No. Appendix M-2

Date 7/10/08

Vertical Scale 1:200



Legend

- VWP - Vibrating Wire Piezometer
- EW - Extremely Weathered
- EOH - End of Borehole
- mbgl - metres below ground level
- I - Inclinometer
- *
- b/w - between

Job Portland Wade Street Slip

Design BY

Office Melbourne

Date 11/6/08

Job No. 2124301 B

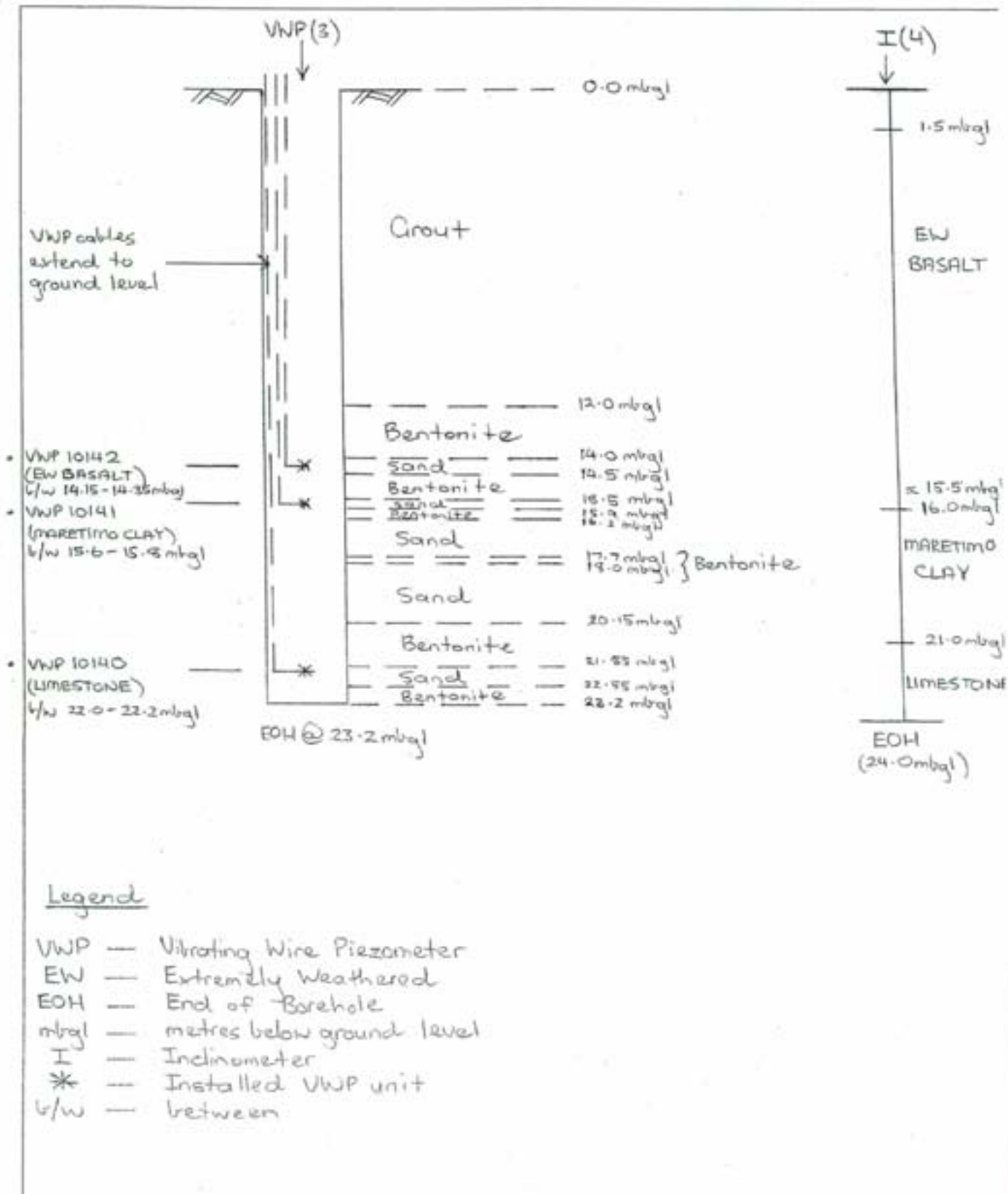
VWP(3) Installation Details

Checked PD

Page No. Appendix M-3

Date 7/10/08

Vertical Scale 1:200



Job Portland Wade Street Slip

Design BY

Office Melbourne

Date 13/6/08

Job No. 2124301B

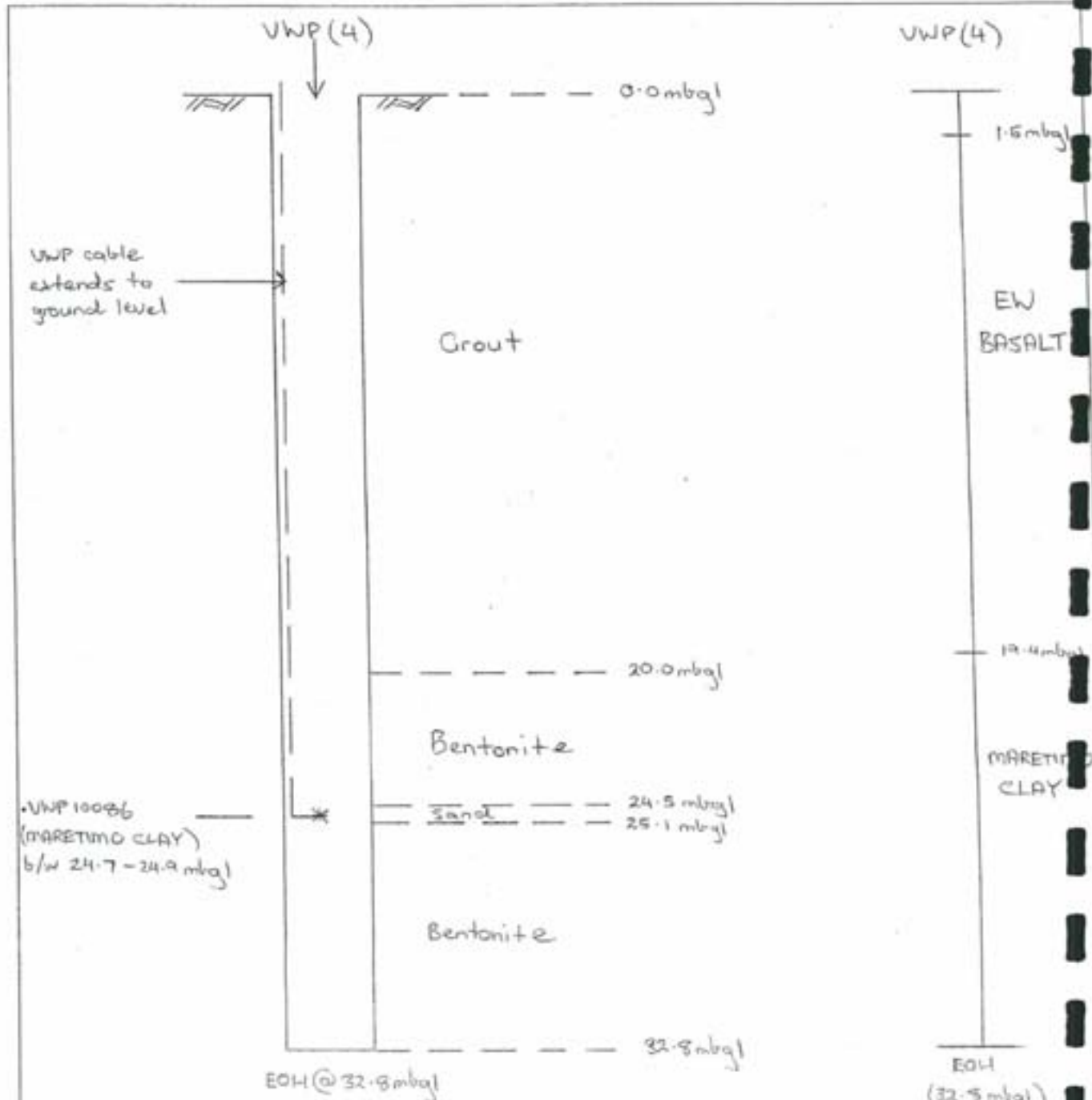
VWP(4) Installation Details

Checked PD

Page No. Appendix M-4

Date 7/10/08

Vertical : 1:200
Scale :



Legend

VWP — Vibrating Wire Piezometer
 EW — Extremely Weathered
 EOH — End of Borehole
 mbg — metres below ground level

I — Inclinator
 * — Installed VWP unit
 b/w — between