

Regional industry

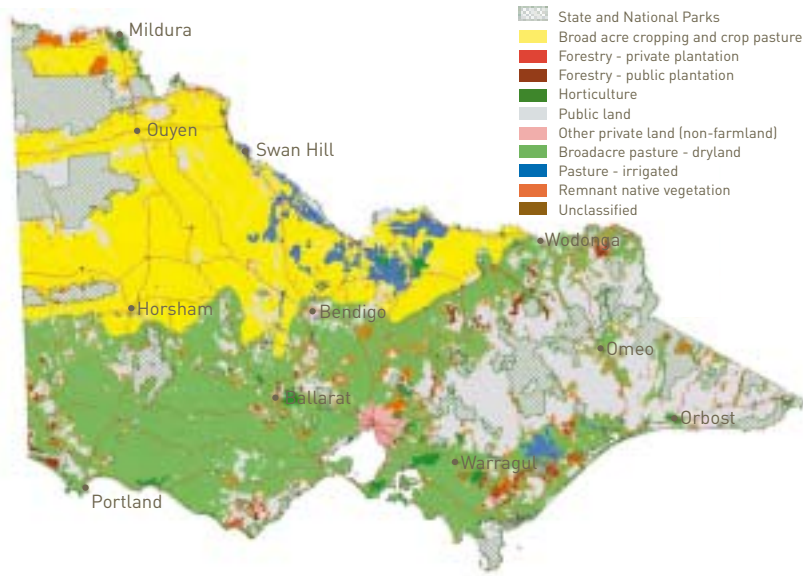
Industry and environment

Many aspects of the regional economy reflect variations in the natural environment which provides conditions suitable for different types of agriculture. Secondary industries such as food processing have developed from these agricultural bases as have manufacturing industries such as machinery and tool making.

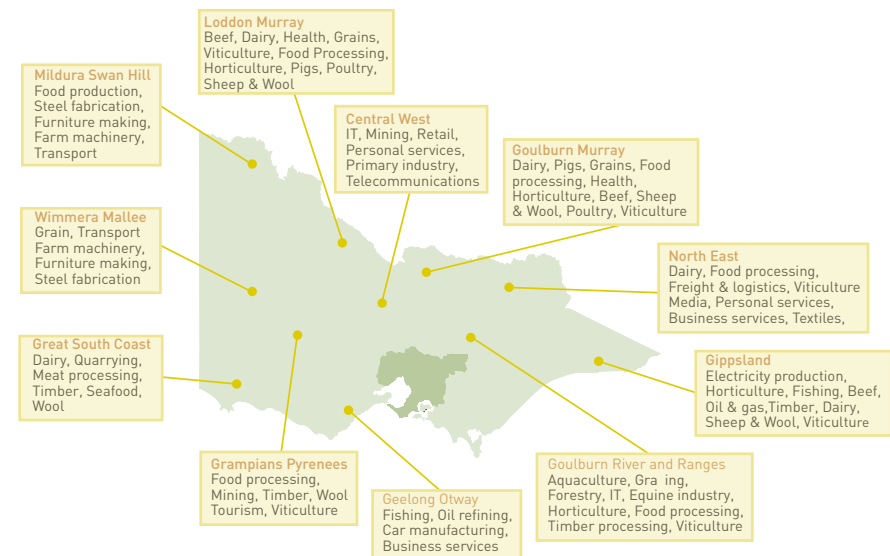
The natural environment also provides the basis for much regional tourism, for example: the Central Highland spas; snowfields; and the unique scenery of the Grampians or coastal regions. In addition, culture and history can play a part in economic development. For example, the Grampians-Gareiverd National Park has highlighted its Indigenous history for tourist information and education while the historical legacy of central Victoria's goldfields has provided a boon for small towns like Maldon and Clunes.

Land tenure and land use¹

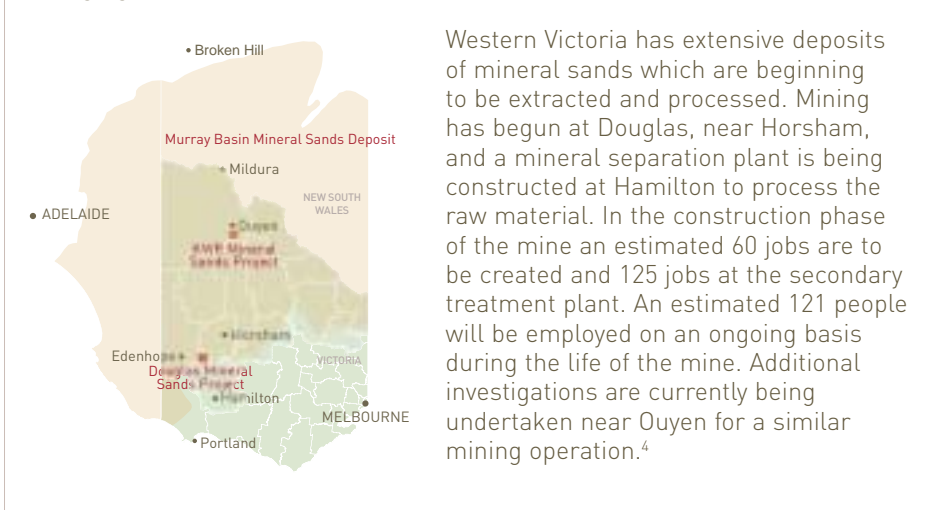
Victoria, 2000



Regional economic profile²



Emerging industries: the case of mineral sands³



Western Victoria has extensive deposits of mineral sands which are beginning to be extracted and processed. Mining has begun at Douglas, near Horsham, and a mineral separation plant is being constructed at Hamilton to process the raw material. In the construction phase of the mine an estimated 60 jobs are to be created and 125 jobs at the secondary treatment plant. An estimated 121 people will be employed on an ongoing basis during the life of the mine. Additional investigations are currently being undertaken near Ouyen for a similar mining operation.⁴

Land and People "The landscape 1750 to 2000" p. 68

Sources ¹Annett 2002 "Victorian Agriculture 1904-2000" ²Victorian Government 2005 "Victoria's regions" www.liveinvictoria.vic.gov.au ³Iuka Resources 2005 "Developing a global mineral sands portfolio" ⁴Iuka Resources 2005 "Murray Basin Douglas Project"; RDV 2005 *The Murray Basin Mineral Sands*