

Victoria's water resource

Surface and ground water resources

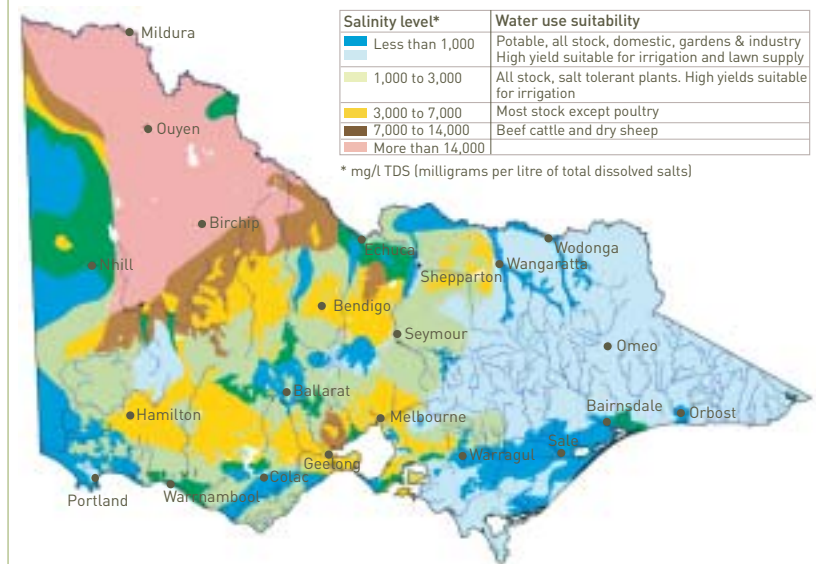
Of the 150 million Megalitres (ML)* of rain or snow falling on Victoria each year, 84% evaporates, or is transpired by vegetation to the atmosphere. Around 15% is discharged as surface runoff and streamflow, while the remaining 1% infiltrates the soil to groundwater aquifers. Compared to other parts of the world, Victoria's evaporation and transpiration losses are high – they are typically only 60% in Europe and North America.

* One ML is a million litres, or approximately one Olympic size swimming pool.¹

Surface water resources and river basins²



Groundwater salinity levels³



Sources ¹Victorian Resources Online www.dpi.vic.gov.au ²DSE 2005 Corporate Geographical Data Library ³DSE 2005 State Water Report