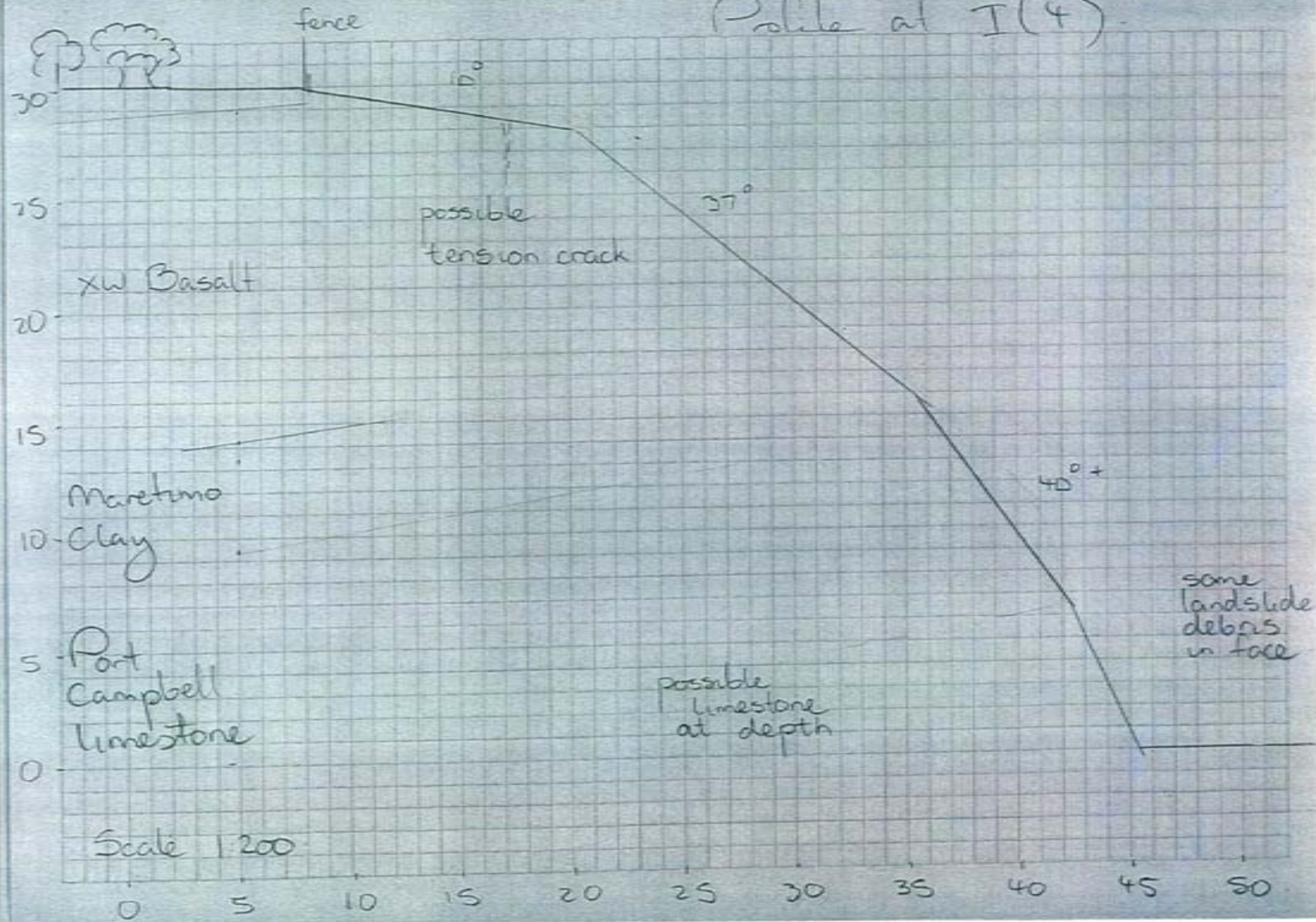


Appendix W

Model Calibration for Colluvium

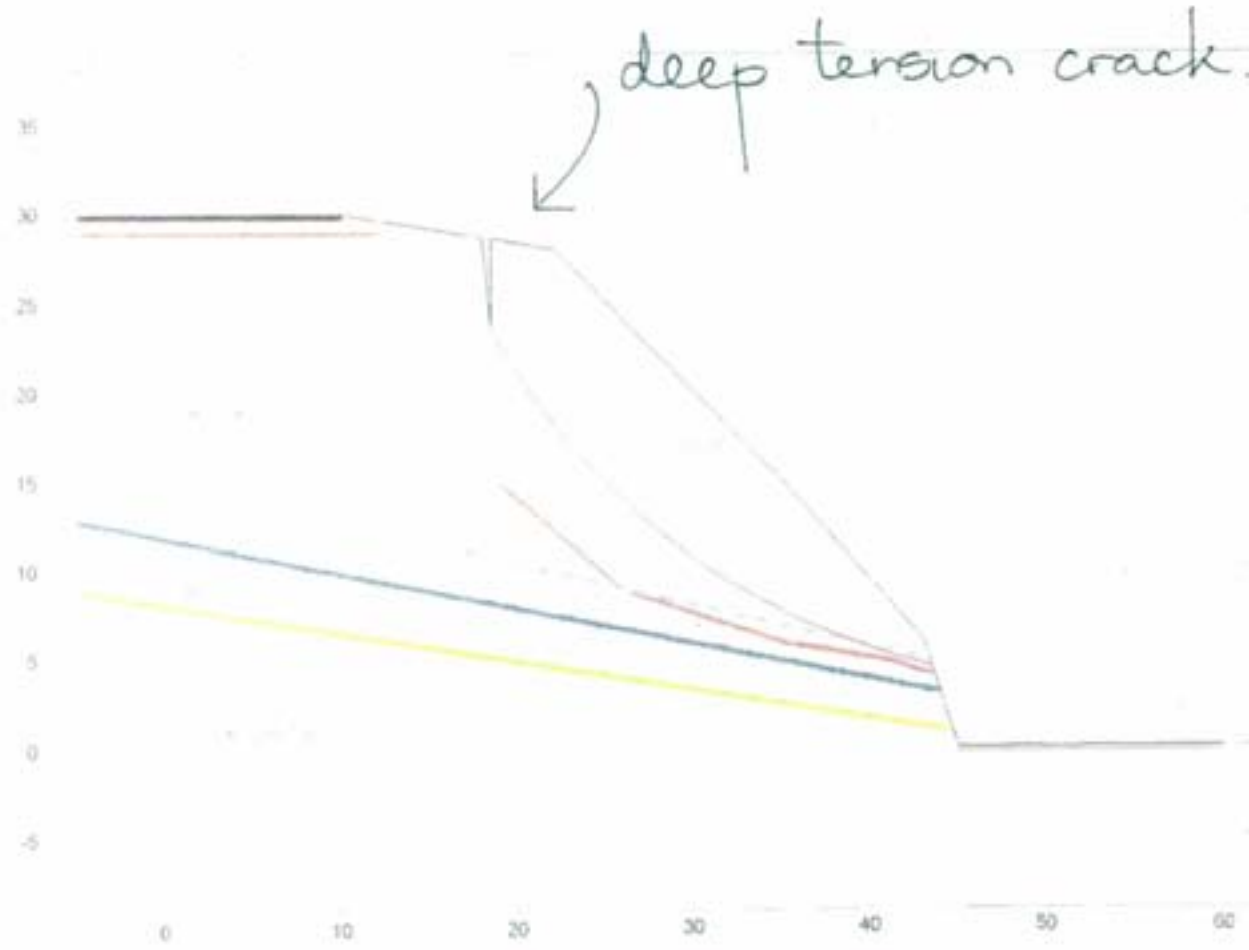
Profile at I(4)



Scale 1:200

GALENA version 1.00

- Colluvium
- XW Basalt
- Maritime Clay
- Portland Limestone



Analysis 1
 Single Stability Analysis
 Method: Bishop Simplified
 Surface: Circular

Results
 Factor of Safety: 1.04

Solved: 15 Sep 2008 Processed: 19 Sep 2008

Sheet

A S Miner Geotechnical

$c = 12$
 $\phi = 33^\circ$
 $\gamma = 2.04/m^3$

Project Portland thru Section (4)
 Section (4)_Colluvial Slope
File C:\asm-3es\Projects 2007 to 2008\Portland (4)_col.grf

$f_{os} = 1.10$

$c = 15$
 $\phi = 33^\circ$
 $\gamma = 2.04/m^3$