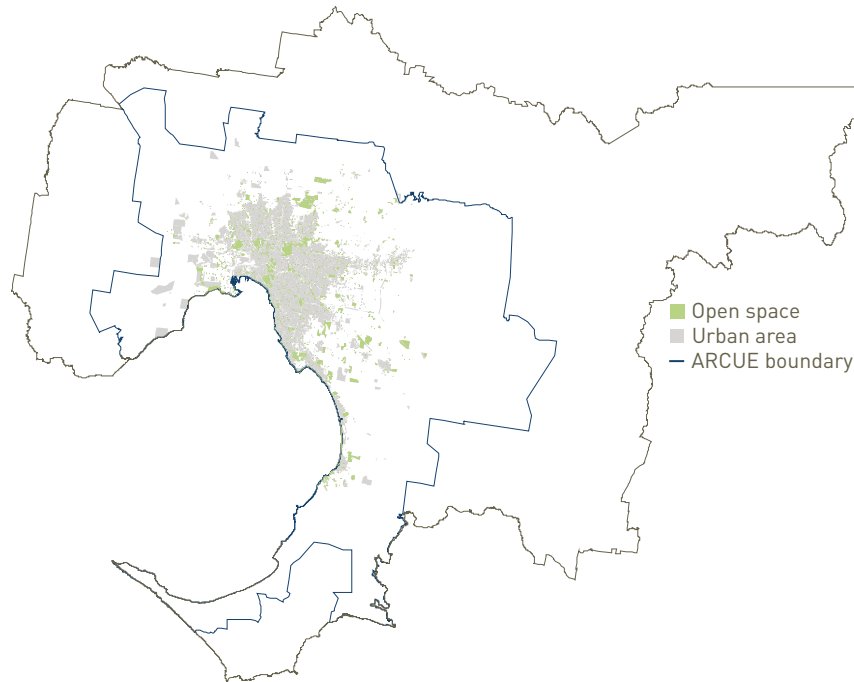


Open space 1951 and 2002

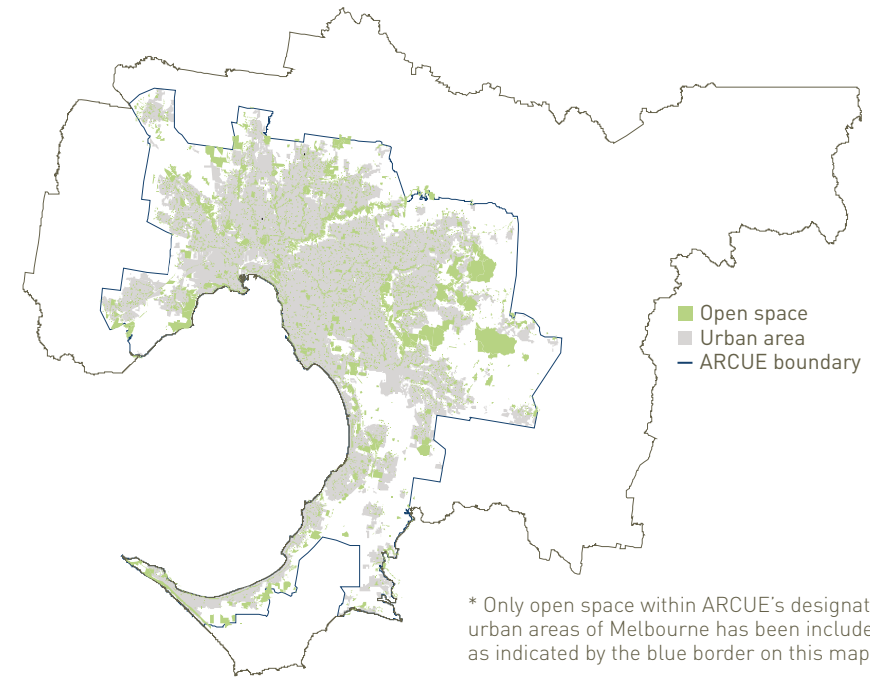
Public open space 1951 and 2002

Melbourne's urban public open space in 1951 was largely in the form of small parks distributed throughout the suburbs. Since 1951, as the population has expanded, larger regional parks have become more prominent in the provision of open space within the expanding urban area (see Maps 1 and 2). Many of these larger regional urban spaces were classified in 1951 as farmland or water reserves.

1 Public open space*, 1951 Melbourne



2 Public open space*, 2002 Melbourne



* Only open space within ARCUE's designated urban areas of Melbourne has been included, as indicated by the blue border on this map

* See Appendix 1 and 2 for land use categories used to make up public open space for 1951 and 2002

3 Public open space within 2002 ARCUE boundary Melbourne, 1951 and 2002

1951	
Total open space area (km ²)	90
Total urban area (km ²)	474
2002	
Total open space area (km ²)	452
Total urban area inside ACRUE boundary (km ²)	1787