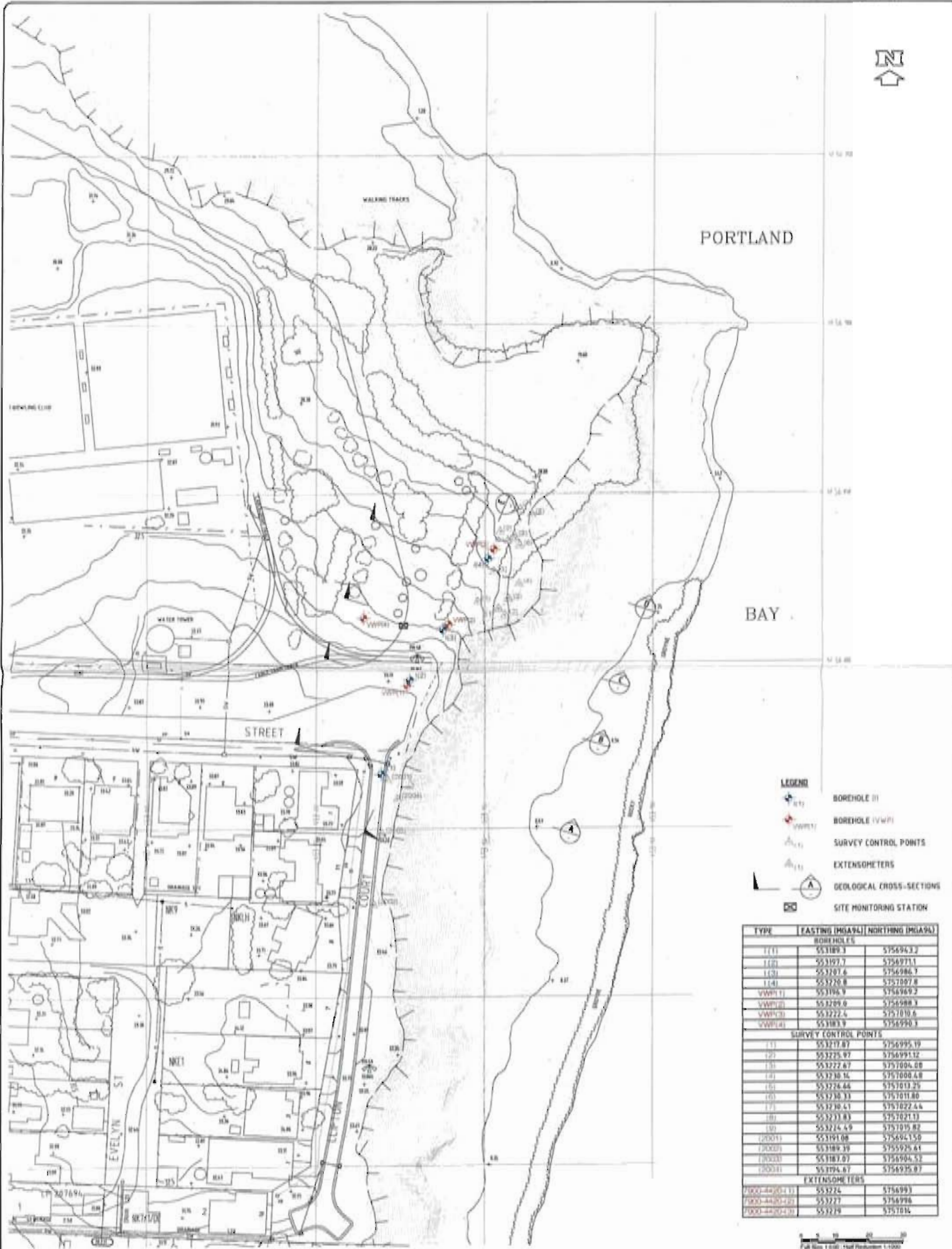


Appendix F

Site Plan: Instrumentation &
Geological Cross-Section Transects



- LEGEND**
- BOREHOLE (I)
 - BOREHOLE (V/W/P)
 - SURVEY CONTROL POINTS
 - EXTENSOMETERS
 - GEOLOGICAL CROSS-SECTIONS
 - SITE MONITORING STATION

TYPE	EASTING (MGA94)	NORTHING (MGA94)
BOREHOLES		
I(1)	553189.3	5756943.2
I(2)	553197.7	5756973.1
I(3)	553207.6	5756986.7
I(4)	553220.8	5757007.8
VVW(1)	553194.9	5756969.2
VVW(2)	553209.0	5756988.3
VVW(3)	553222.4	5757010.6
VVW(4)	553183.9	5756990.3
SURVEY CONTROL POINTS		
(1)	553217.87	5756995.19
(2)	553225.97	5756993.12
(3)	553227.67	5757004.08
(4)	553230.14	5757008.48
(5)	553224.46	5757013.25
(6)	553230.33	5757011.80
(7)	553230.41	5757022.44
(8)	553231.83	5757021.13
(9)	553224.49	5757019.82
(2001)	553191.08	5756941.50
(2002)	553189.39	5755925.41
(2003)	553187.87	5755904.52
(2004)	553194.67	5756925.87
EXTENSOMETERS		
7000-44-01-11	553224	5756993
7000-44-01-20	553227	5756996
7000-44-01-30	553229	5757014



REV	DATE	DESCRIPTION	DRAWN	CHECK	DESIGN	VERIFY
B	22.12.08	LEGEND AMENDED	RM	TK	PD	
A		FIRST ISSUE	BJR	JA	PD	

© Parsons Brinckerhoff Australia Pty Limited (PB)
 Copyright in the drawings, information and data recorded in this document ("the information") is the property of PB. The information and the information are solely for the use of the authorized recipient and this document may not be used, copied or reproduced in whole or part for any purpose other than that for which it was supplied by PB. PB makes no representation, undertakes no duty and accepts no responsibility to any third party who may use or rely upon this document or the information.
 PB is a certified Quality System to ISO 9001

CLIENT: DEPARTMENT OF SUSTAINABILITY & ENVIRONMENT

Project: 2124301B - CIV - 0001

PROJECT: PORTLAND WADE STREET SLIP

SITE PLAN: INSTRUMENTATION LOCATIONS AND CROSS-SECTION TRANSECTS (APPENDIX F)

PROJECT NO.	DISCIPLINE	NUMBER	REV.
2124301B	- CIV -	0001	B