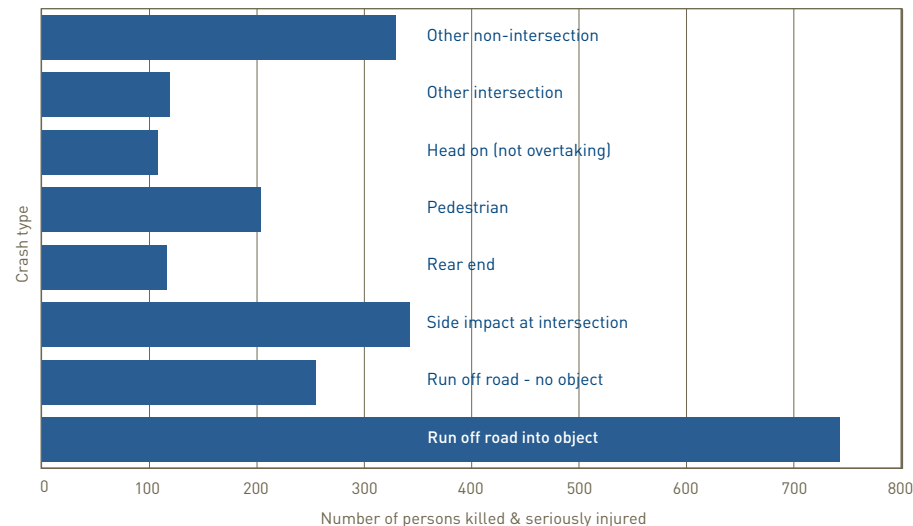


Road safety

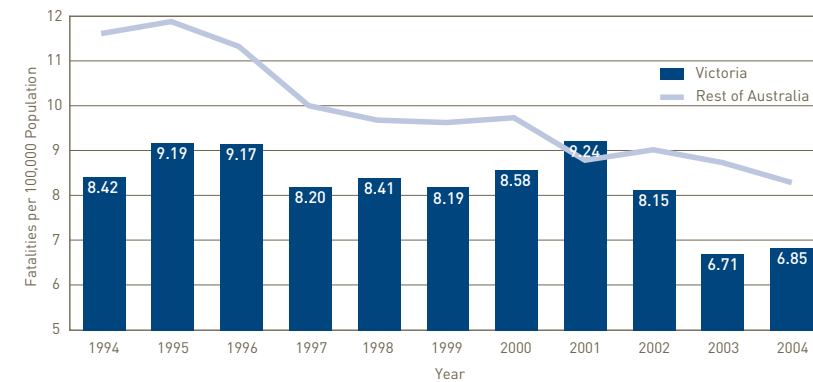
Over the past 30 years there has been continued improvement in road safety, despite increasing levels of car ownership and car use. Victoria's road tolls in 2003 and 2004 were the lowest since records started to be collected in 1951. The state is currently leading the way nationally in road safety, recording 6.9 deaths per 100,000 population compared to 8.4 for the rest of Australia. The number of deaths on Victoria's country roads dropped between 2003 and 2004 whereas road deaths on metropolitan roads increased.

The majority of fatal crashes on country roads involve country people, dispelling the commonly held belief that it is non locals who are killed in country road crashes. High speed undivided country roads are the highest risk areas for road deaths in regional Victoria, with approximately 80% of all country fatalities occurring on roads with speed limits of 100km/h or higher.¹

Country road crash types, 2004²

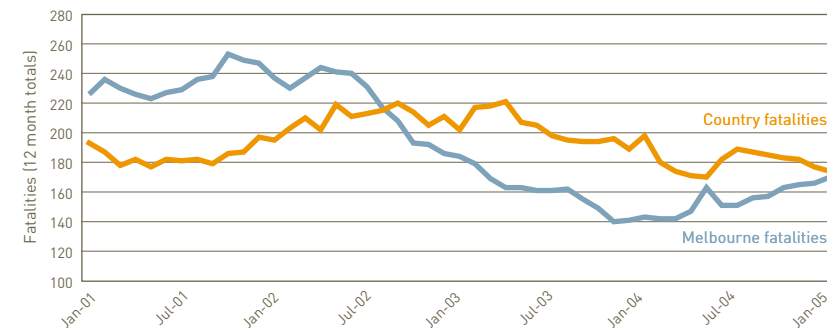


Fatalities: Victoria and the rest of Australia²



Fatalities: Melbourne and Country²

January 2001 to January 2005



Crash types

More than half of all people killed and seriously injured on country roads are involved in one of two types of crashes – those that involve a vehicle running off the road and hitting a fixed object such as a tree or pole, and those that occur at intersections. Around 80% of all intersection crashes in regional Victoria involved side impacts, which are the most severe crash types in terms of injury outcome.