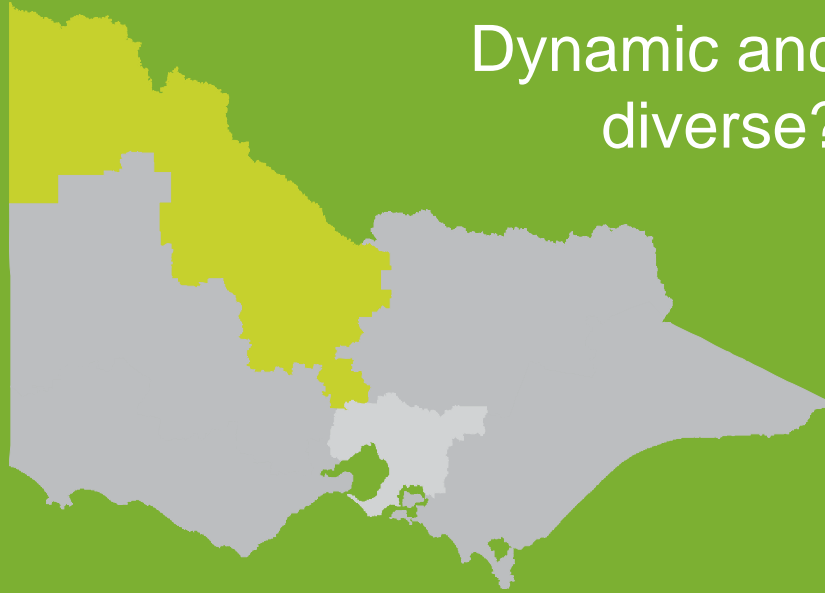




Your Region:

Dynamic and
diverse?



the evidence from the 2006 census

Presentation by the Spatial Analysis and Research Branch DPCD
Mildura, 15th April 2008

Victorian Government regions



Agenda for this Forum

- 9.30 Opening comments
- 9.40 Introduction

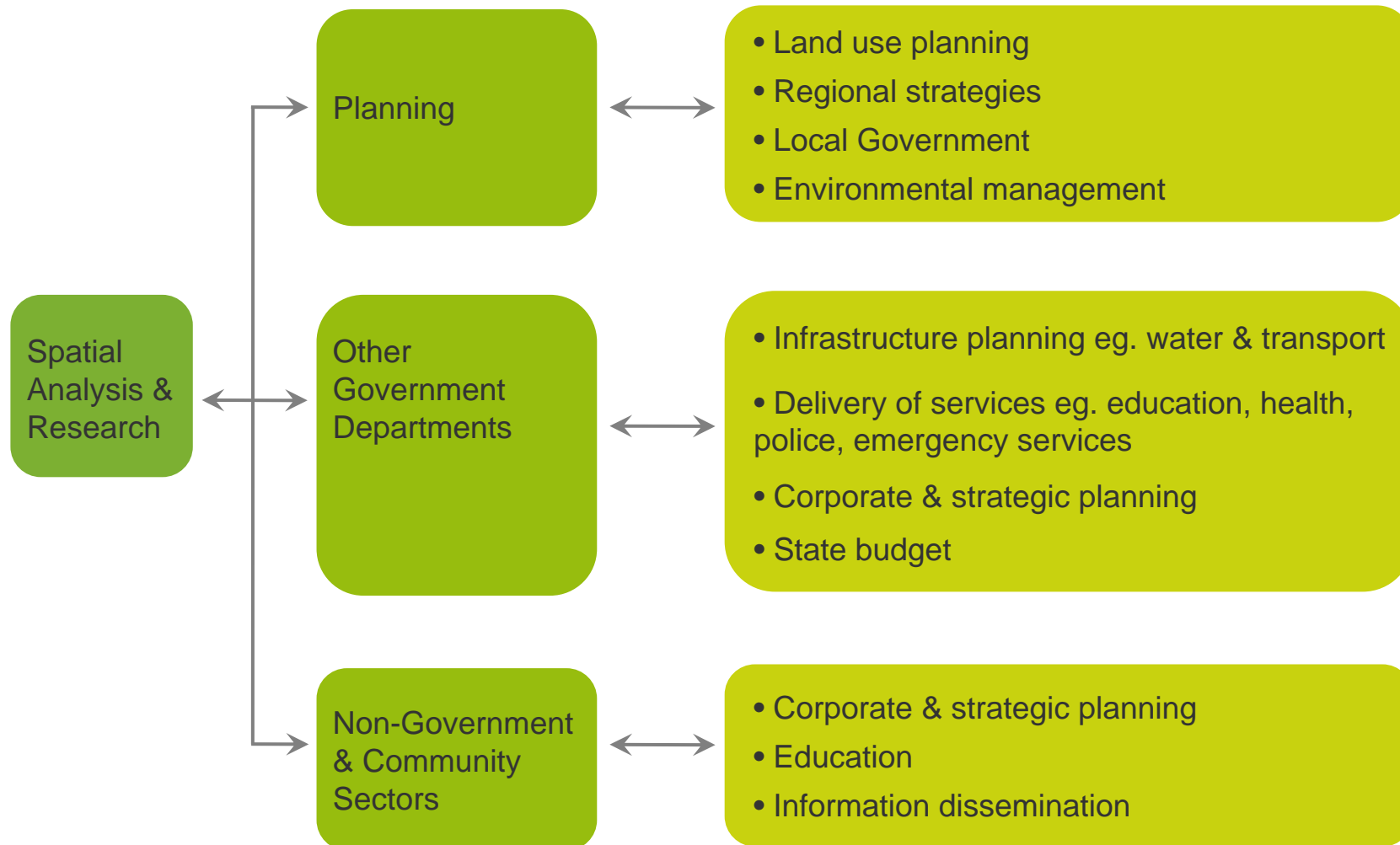
- 10.00 Population and household trends in the Loddon Mallee region

- 10.40 Morning tea break

- 11.00 Social and economic characteristics of Loddon Mallee region

- 11.45 Conclusions – ongoing analysis and research
- 12.00 Questions and discussion
- 12.20 Closing comments
- 12.30 Lunch

The users and uses of SAR's products and services



The three important things about the census:

1. Wide range of related data about the population, what it does and about the housing stock

Incredibly rich data source

Social characteristics

- Basic demographics – age, sex
- Ethnicity indicators – birthplace, language, ancestry
- Religion
- Labour force indicators – employment, industry, occupation
- Dwelling type, tenure
- Household and family composition

New variables in 2006 include:

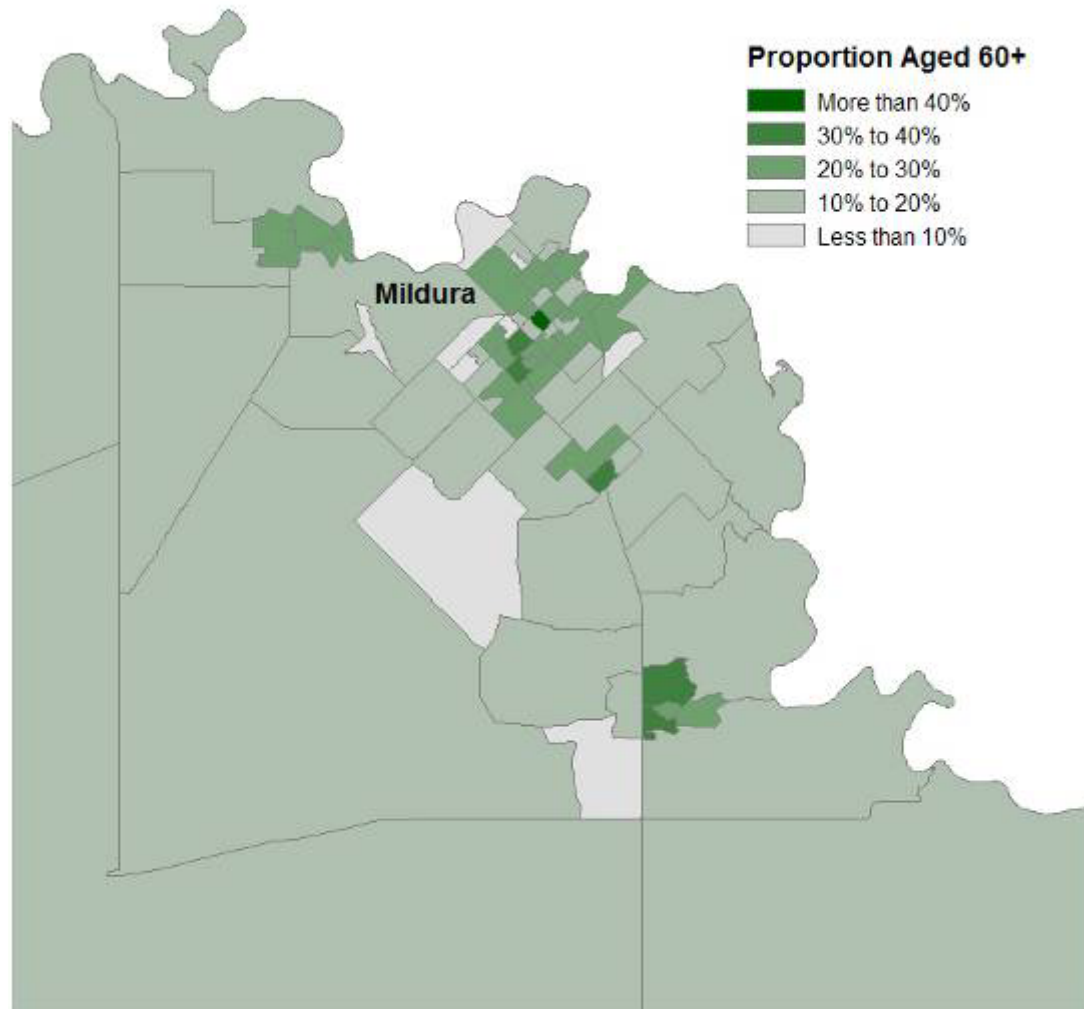
- Volunteerism
- Unpaid work
- Need for assistance

The three important things about the census:

1. Wide range of related data about the population, what it does and about the housing stock
2. Fine geographical detail provides evidence for place based approaches

The detailed geography of the census

Population Aged 60 years and over, Mildura and surrounds, 2006



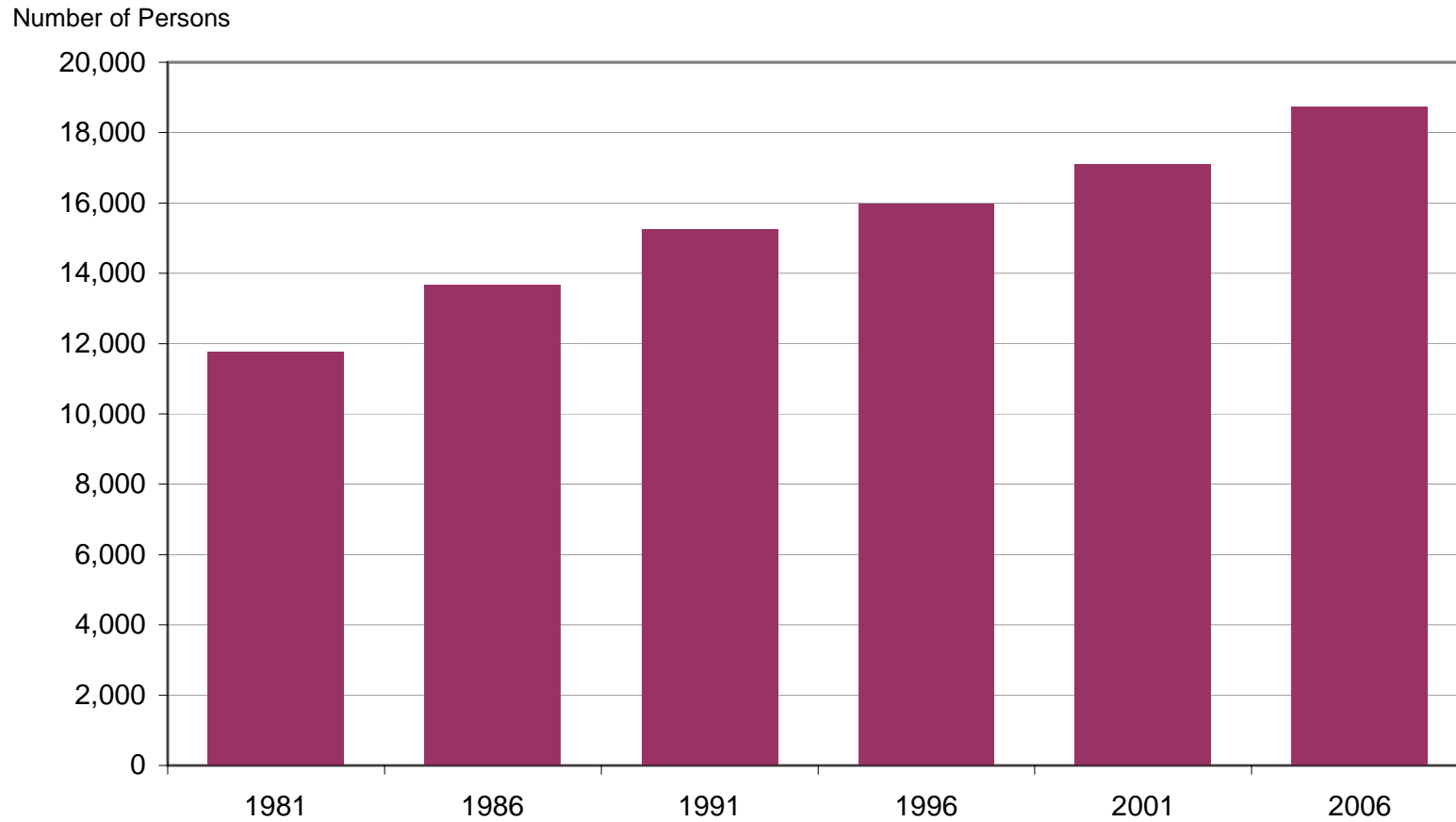
Source: 2006 Census of Population and Housing

The three important things about the census:

1. Wide range of related data about the population, what it does and about the housing stock.
2. Fine geographical detail provides evidence for place based approaches
3. Time series data enables planning

Time series data

Persons aged 60 plus, Mallee, 1981 to 2006

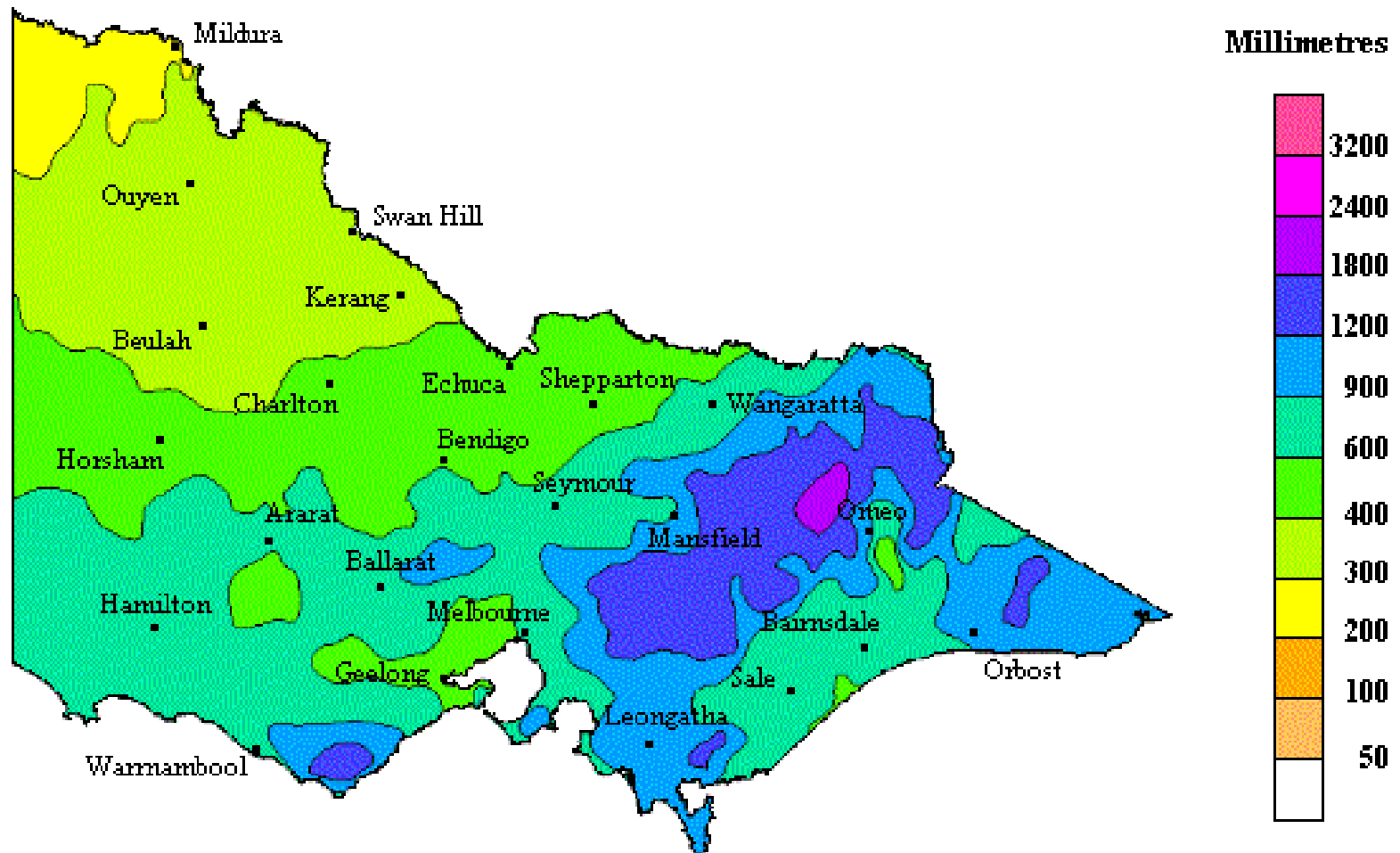


Source: DPCD Time Series Database and ABS Census 2006 Table P04



Environmental diversity

Average annual rainfall, Victoria

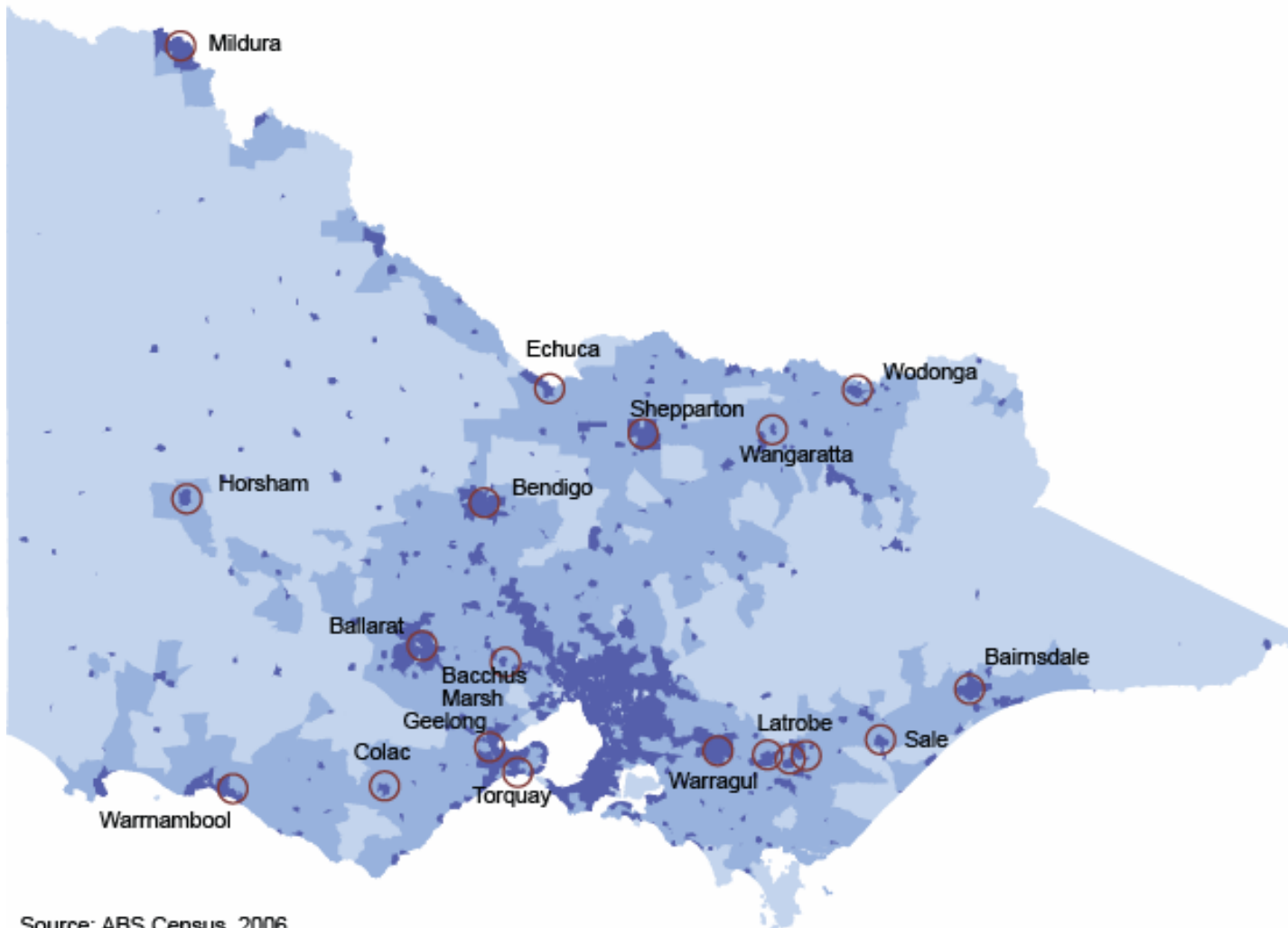


Economic diversity



Settlement diversity

Population density 2006



Source: ABS Census, 2006



Different people with different needs

CASTERTON COMMUNITY



Photo: Simon O'Dwyer - Courtesy of "The Age"

Agenda for this Forum

- ✓ 9.30 Opening comments
- ✓ 9.40 Introduction

- 10.00 Population and household trends in the Loddon Mallee region

- 10.40 Morning tea break

- 11.00 Social and economic characteristics of Loddon Mallee region
- 11.45 Conclusions – ongoing analysis and research
- 12.00 Questions and discussion
- 12.20 Closing comments
- 12.30 Lunch