

**APPENDIX 2
PORT PHILLIP BAY HISTORICAL AERIAL PHOTOGRAPHY**

**THE FOLLOWING APPENDIX HAS BEEN EXTRACTED FROM THE
REPORT: *SEAGRASS MAPPING OF PORT PHILLIP BAY, JUNE 2001***

**FOR A COPY OF THE REPORT SEE *PPB SEAGRASS REPORT.PDF*
in the Fishing and Aquaculture theme at www.nre.vic.gov.au**

**Copyright © The State of Victoria, Department of Natural Resources and
Environment, 2001**

**This work is copyright. Apart from any use under the Copyright Act 1968, no part
may be reproduced by any process without written permission.**

General disclaimer:

**This publication may be of assistance to you but the State of Victoria and its
employees do not guarantee that the publication is without flaw of any kind or is
wholly appropriate for your particular purposes and therefore disclaims all
liability for any error, loss or other consequence which may arise from you relying
on any information in this publication.**



Photo 3.1a: Grassy point, 1947 (Scale 1:10,000)



Photo 3.1b: Grassy Point, 1975 (Scale 1:10,000)



Photo 3.1c: Grassy point, 1993 (Scale 1:10,000)



Photo 3.1d: Grassy Point, 2000 (Scale 1:10,000)

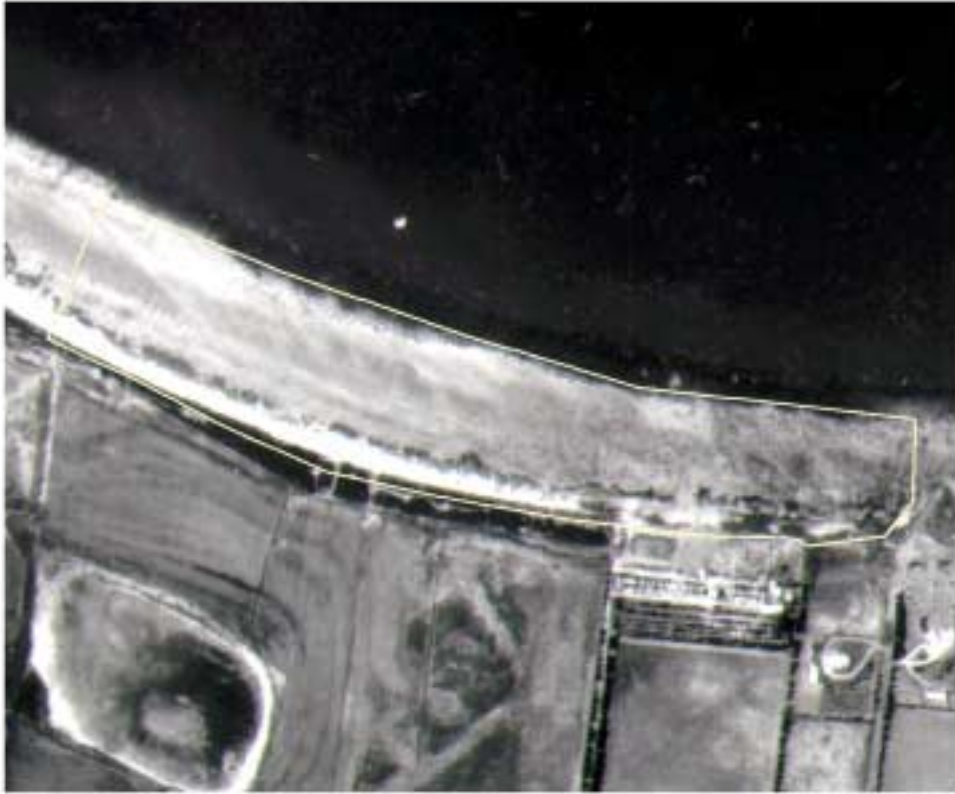


Photo 3.2a: Sands Caravan Park, Leopold, 1974 (Scale 1:10,000)



Photo 3.2b: Sands Caravan Park, Leopold, 1984 (Scale 1:10,000)



Photo 3.2c: Sands Caravan Park, Leopold, 1993 (Scale 1:10,000)



Photo 3.2d: Sands Caravan Park, Leopold, 2000 (Scale 1:10,000)



Photo 3.3a: Altona, 1962 (Scale 1:10,000)



Photo 3.3b: Altona, 1979 (Scale 1:10,000)



Photo 3.3c: Altona, 1993 (Scale 1:10,000)



Photo 3.3d: Altona, 2000 (Scale 1:10,000)

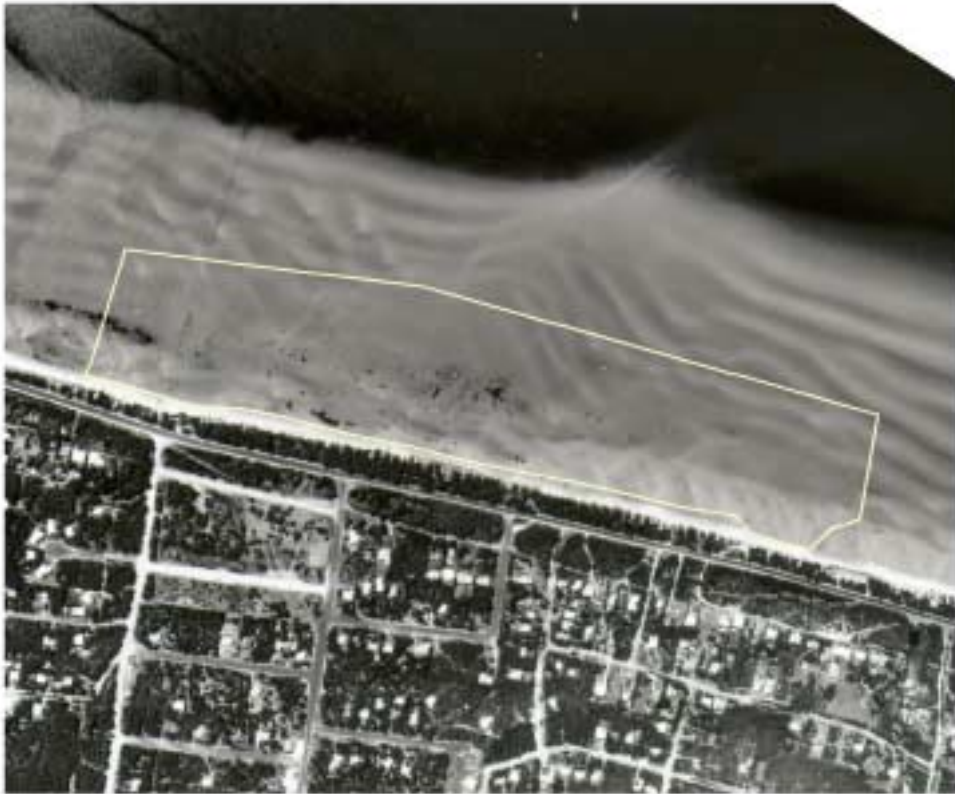


Photo 3.4a: Blairgowrie, 1966 (Scale 1:10,000)



Photo 3.4b: Blairgowrie, 1993 (Scale 1:10,000)



Photo 3.4c: Blairgowrie, 1996 (Scale 1:10,000)



Photo 3.4d: Blairgowrie, 2000 (Scale 1:10,000)